

4

3

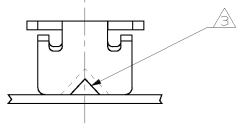
2

1

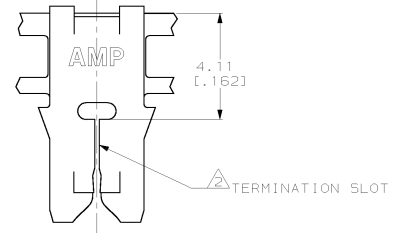
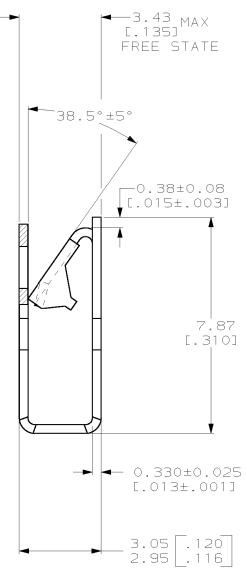
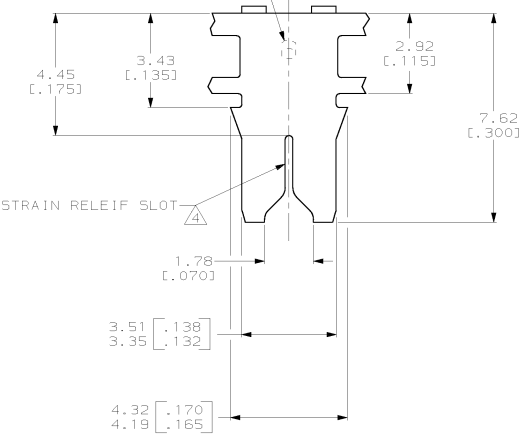
THIS DRAWING IS UNPUBLISHED. RELEASED FOR PUBLICATION
 (C) COPYRIGHT IS BY AMP INCORPORATED. ALL RIGHTS RESERVED.

REV	DATE	DESCRIPTION	DATE	BY	APP'D
AF	50				
C		REVISED PER 053A-0451-00	24JUL00	HF	KR

- 1 CONTINUOUS STRIP ON REELS WITH TERMINALS LOCATED ON 5.59±0.08 [.220±.003] CENTERS.
- △ SLOT TERMINATES A SINGLE MAGNET WIRE.
- △ COPPER RANGE: 0-.25-0.32mm² [#30-#28] AWG.
- △ POKE-IN ACCEPTS A 0.5-0.9mm² [#20-#18] AWG SOLID OR FUSED STRANDED LEAD WIRE.
- △ SLOT ACCEPTS A SINGLE MAGNET WIRE.
- △ COPPER RANGE: 0-.29-0.32mm² [#29-#28] AWG.
- △ SPECIAL LABELING.
- △ PRELIMINARY - NOT FOR PRODUCTION.



IDENTIFICATION NUMBER 6 FOR MAGNET WIRE RANGE



△ 1217011-2 △
1217011-1
PART NUMBER

THIS DRAWING IS A CONTROLLED DOCUMENT.		DATE: 12/4/2000	AMP Incorporated Harrisburg, PA 17105-3608	
DRAWN BY: MICHAEL S. FEHNER		DATE: 12/4/2000		
CHECKED BY: EURT A. RANDOLPH		DATE: 12/4/2000		
DIMENSIONS: mm (INCHES)		PRODUCT SPEC: 108-2012	TERMINAL, POKE-IN, 300 SERIES MAG-MATE™	
TOLERANCES UNLESS OTHERWISE SPECIFIED:		APPLICATION SPEC: 114-2046	RESTRICTED TO	
FRACTIONS: 1/16, 1/8, 1/4, 1/2, 3/4, 1, 2, 3, 4, 5, 6, 8, 10, 12, 15, 20, 25, 30, 40, 50, 60, 80, 100		STRT CASE CODE (DRAWING NO): A200779	1217011	
MATERIAL: 4M BRASS		FINISH: 0.002032 [.000080] MIN TIN PLATE	SCALE: 10:1 SHEET: 1 OF 1 REV: C	
		CUSTOMER DRAWING		