

4

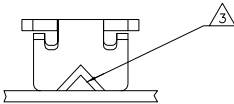
3

2

1

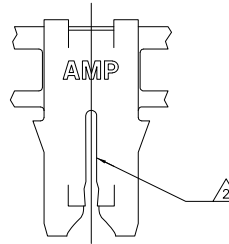
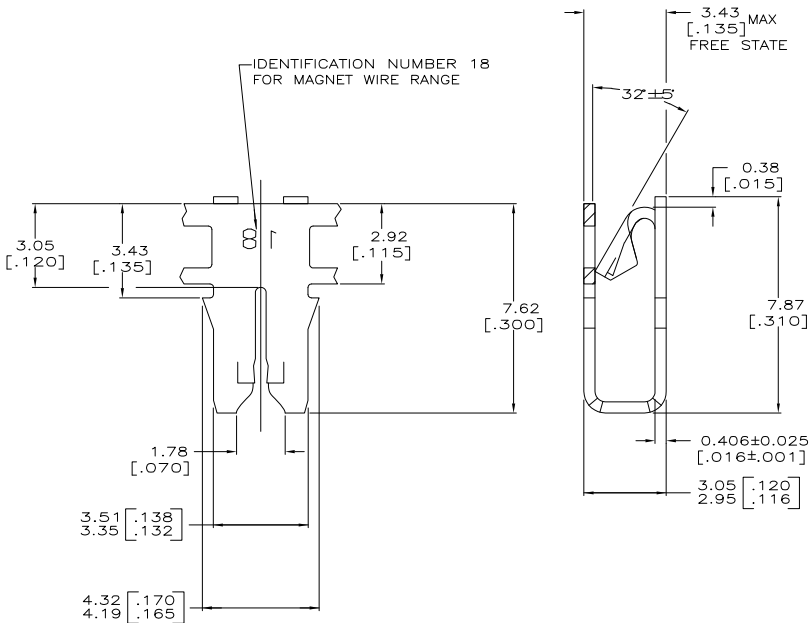
THIS DRAWING IS UNPUBLISHED. RELEASED FOR PUBLICATION  
 © COPYRIGHT BY TYCO ELECTRONICS CORPORATION. ALL RIGHTS RESERVED.

LOC	DIST	REVISIONS			
F	LTR	DESCRIPTION	DATE	BY	APP'D
C1		REVISED PER ECR-07-001777	01FEB07	HMR	KR



- 1 CONTINUOUS STRIP ON REELS WITH TERMINALS LOCATED ON 5.59±0.08 [.220±.003] CENTERS.
- ② SLOT TERMINATES EITHER A SINGLE OR DOUBLE MAGNET WIRE OF THE SAME SIZE AND TYPE. COPPER RANGE: 0.64-0.81mm [#22-#20] AWG.
- ③ POKE-IN ACCEPTS A 0.81-1.02mm² [#20-#18] AWG SOLID OR FUSED STRANDED LEAD WIRE.
- ④ SPECIAL CAVITY ANVIL HEIGHT REQUIRED 3.30±0.07 [.130±.003]. REFERENCE APPLICATION SPEC 114-2046, SEC 3.2, NOTE 7.

IDENTIFICATION NUMBER 18 FOR MAGNET WIRE RANGE



STANDARD	PAPER	CARDBOARD REEL	④ 1217824-1
REELING DIRECTION	SPLICE	REELING MATERIAL	PART NUMBER

THIS DRAWING IS A CONTROLLED DOCUMENT.		DWG: MICHAEL S. FEHR JUL2002 CHK: KURT A. RANDOLPH JUL2002 APD: KURT A. RANDOLPH JUL2002 PRODUCT SPEC: 108-2012 APPLICATION SPEC: 114-2046 WEIGHT: -	Tyco Electronics Corporation Harrisburg, Pa 17105-3608 <b>Tyco Electronics</b> TERMINAL, POKE-IN, 300 SERIES MAG-MATE™	RESTRICTED TO
DIMENSIONS: mm [INCHES] 0 PLC ± - 1 PLC ± - 2 PLC ± 0.25(010) 3 PLC ± - 4 PLC ± - ANGLES ± -	FINISH: 0.002032[.000080] MIN TIN PLATE	SIZE: A2 CAGE CODE: 00779 DRAWING NO: 1217824	SCALE: 10:1	SHEET: 1 OF 1
MATERIAL: 4M BRASS		CUSTOMER DRAWING		REV: C1

AMP 1471-9 REV 31MMR2000

1217824

A