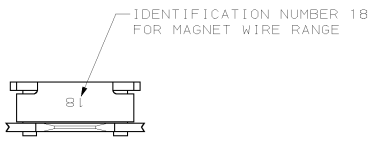


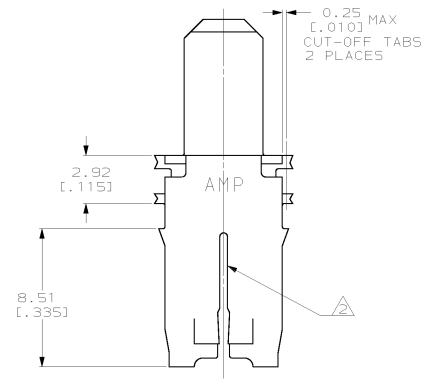
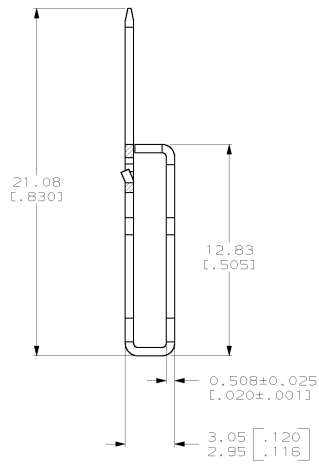
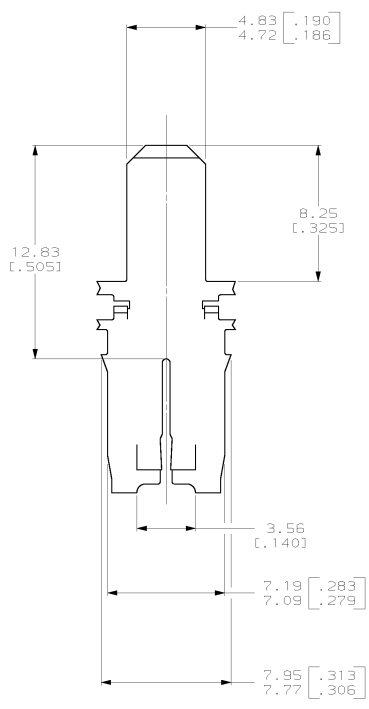
4 3 2 1

THIS DRAWING IS UNPUBLISHED.
 RELEASED FOR PUBLICATION
 COPYRIGHT 19 BY AMP INCORPORATED. ALL RIGHTS RESERVED.

LOC	DIST	REVISIONS			
		DESCRIPTION	DATE	ENR	APPD
AF	50				
		F LTR			
		C REL PER 063A-0212-02	15MAY02	JR	KR



- 1 CONTINUOUS STRIP ON REELS WITH TERMINALS LOCATED ON 8.38 ± 0.08 [.330 ± .003] CENTERS.
- △ SLOT ACCEPTS $0.64 - 0.81$ mm [#22-#20] AWG COPPER MAGNET WIRE. 2 WIRES OF THE SAME SIZE MAX PER SLOT.
- △ VARNISH RESIST OVER 0.00127 [.000050] MIN NICKEL PLATE.
- △ REVERSE REELED.



1217491-1
 PART NUMBER

THIS DRAWING IS A CONTROLLED DOCUMENT.		DW: MICHAEL S. FEHNER 01SEP2000		AMP		AMP Incorporated Harrisburg, PA 17105-3608	
DIMENSIONS: mm (INCHES)		CHK: KURT A. RANDOLPH 21SEP2000		NAME: TERMINAL, TAB, 4.75 (.187) SERIES, 500 SERIES MAG-MATE™		RESTRICTED TO: -	
TOLERANCES UNLESS SPECIFIED:		APPD: KURT A. RANDOLPH 21SEP2000		PRODUCT SPEC: 108-2012		SCALE: 6:1	
FRACTIONS: 1/16, 1/8, 1/4, 1/2, 1, 2, 3, 4, 5, 6, 8, 10, 12, 16, 20, 25, 32, 40, 50, 60, 80, 100, 125, 160, 200, 250, 320, 400, 500, 600, 800, 1000		MATERIAL: 4M BRASS		APPLICATION SPEC: 114-2066		SHEET: 1 OF 1	
FINISH: -		CUSTOMER DRAWING		STUR: CASE CODE (DRAWING NO): A200779		REV: C	