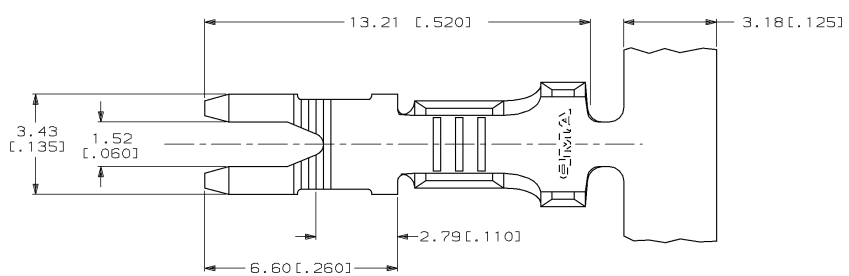
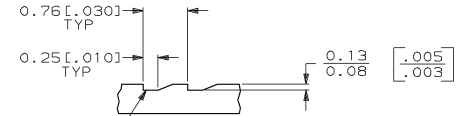
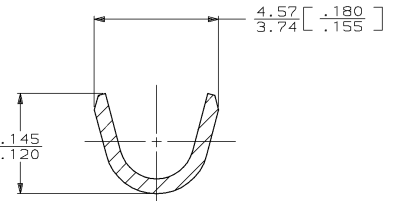
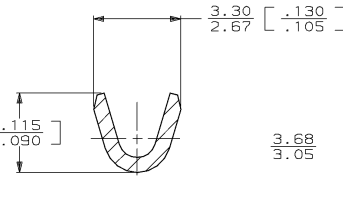
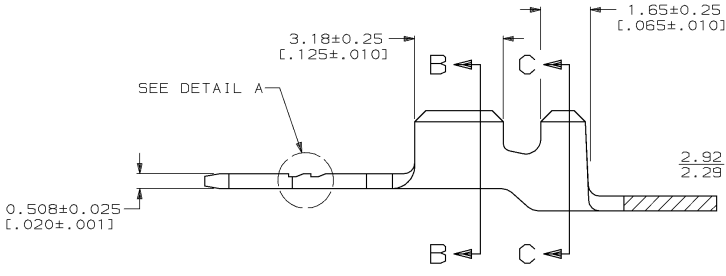


DRAWING MADE IN THIRD ANGLE PROJECTION
 THIS DRAWING IS UNPUBLISHED. RELEASED FOR PUBLICATION
 © COPYRIGHT 19 BY AMP INCORPORATED. ALL INTERNATIONAL RIGHTS RESERVED.

LOC	DIST	P	F	ZONE	LTR	REVISIONS	DATE	APPD
AF	50					C REVISED PER 0204-93	8/4/93	PF/NE



1 CONTINUOUS STRIP ON REELS
 FOR OPTIMUM RETENTION IN POKE-IN TYPE MAG-MATE TERMINALS, ONE OF THE SERRATIONS AS SHOWN MUST BE ENGAGED WITH THE EDGE OF THE LEAF



PROPOSED DESIGN
 NOT RELEASED FOR
 PRODUCTION



	1.52 - 2.54 [.060 - .100]	0.3-0.8 mm ² [22 - 18]	63574-1
	INSULATION RANGE	WIRE RANGE	PART NO
DO NOT SCALE PRINT. UNLESS SPECIFIED DIMENSIONS IN mm (INCHES) TOLERANCES ON + 2 PLC DEC # - 3 PLC DEC # 0.38(.015) ANGLES ± -	DR 2/23/90 M.S. FEHER CHK 2/23/90 JR RUTH APPD 2/23/90 DF DECKER	AMP INCORPORATED Mortgage, Pa. 17105	
MATERIAL #2 HARD BRASS	APPD 2/23/90 TL SHUTTER PRODUCT SPEC -	TAB, POKE-IN, MAG-MATE™	
FINISH TIN PER MIL-T-10727 .002032(.000080) THK	APPLICATION SPEC -	SIZE C	FSCM NO 00779
	WEIGHT -	SCALE 10:1	DRAWING NO 63574
			SHEET 1 OF 1