

4

3

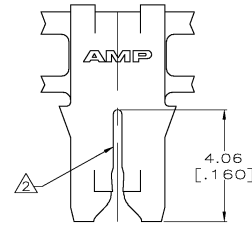
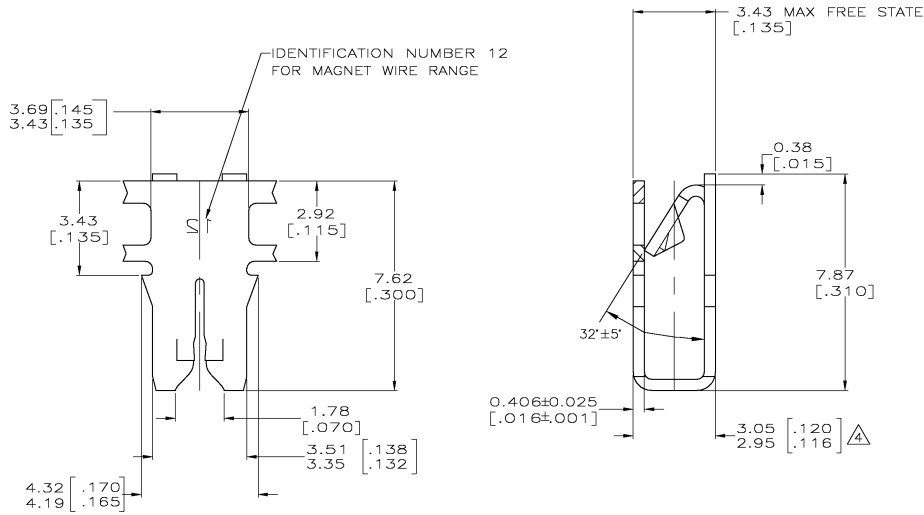
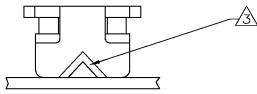
2

1

THIS DRAWING IS UNPUBLISHED. RELEASED FOR PUBLICATION.
 © COPYRIGHT BY TYCO ELECTRONICS CORPORATION. ALL RIGHTS RESERVED.

LOC	DIST	REVISIONS			
P	LTR	DESCRIPTION	DATE	BY	APP'D
AF	50				
	N	REV PER 063A-0254-04	28APR04	JR	KR

- 1 CONTINUOUS STRIP ON REELS WITH TERMINALS LOCATED ON 5.59 ± 0.08 [$.220 \pm .003$] CENTERS.
- 2 SLOT ACCEPTS 0.45-0.64mm [#25-#22] AWG COPPER MAGNET WIRE. TWO WIRES OF THE SAME SIZE PER SLOT EXCEPT 0.64 [#22] AWG WHICH IS ONE WIRE ONLY.
- 3 POKE-IN ACCEPTS A 0.50-0.90mm [#20-#18] AWG SOLID OR FUSED STRANDED LEAD WIRE.
- 4 MEASURE WHEN FREE STATE IS COMPRESSED TO 2.95 [.116] MAX.
- 5 0.002032 [.000080] MIN TIN PLATE.



H04 PHOSPHOR BRONZE	STANDARD	PAPER SPLICE	WITHOUT PAPER EXCEPT IN SPLICE AREAS	△	63658-5
4M BRASS	STANDARD	SPLICE FREE	PLASTIC REEL WITH PAPER	△	63658-4
4M BRASS	REVERSE	PAPER SPLICE	WITHOUT PAPER EXCEPT IN SPLICE AREAS	△	63658-3
4M BRASS	STANDARD	SPLICE FREE	PLASTIC REEL WITHOUT PAPER	△	63658-2
4M BRASS	STANDARD	PAPER SPLICE	WITHOUT PAPER EXCEPT IN SPLICE AREAS	△	63658-1
MATERIAL	REELING DIRECTION	SPLICE	REELING MATERIAL	FINISH	PART NO

DIMENSIONS:		THIS DRAWING IS A CONTROLLED DOCUMENT.		DWG		Tyco Electronics Corporation	
INCHES		DRAWN BY		L.A. MAYER		Harrisburg, PA 17105	
0.0005		CHECKED BY		M.S. FISHER		Tyco Electronics	
0.0010		APPROVED BY		J.L. SHULTER		TERMINAL, POKE-IN,	
0.0020		PRODUCT SPEC		108-2012		300 SERIES MAG-MATE	
0.0050		APPLICATION SPEC		114-2046		-	
0.0100		FINISH		-		-	
0.0200		MATERIAL		SEE TABLE		-	
0.0500		FINISH		SEE TABLE		-	
0.1000		CUSTOMER DRAWING		-		-	
0.2000		SCALE		10:1		-	
0.5000		SHEET		1 of 1		-	
1.0000		REV		N		-	

AMP 1421-9 REV 31 MAR 2000

63658

A