

4

3

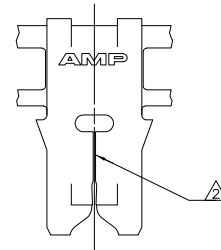
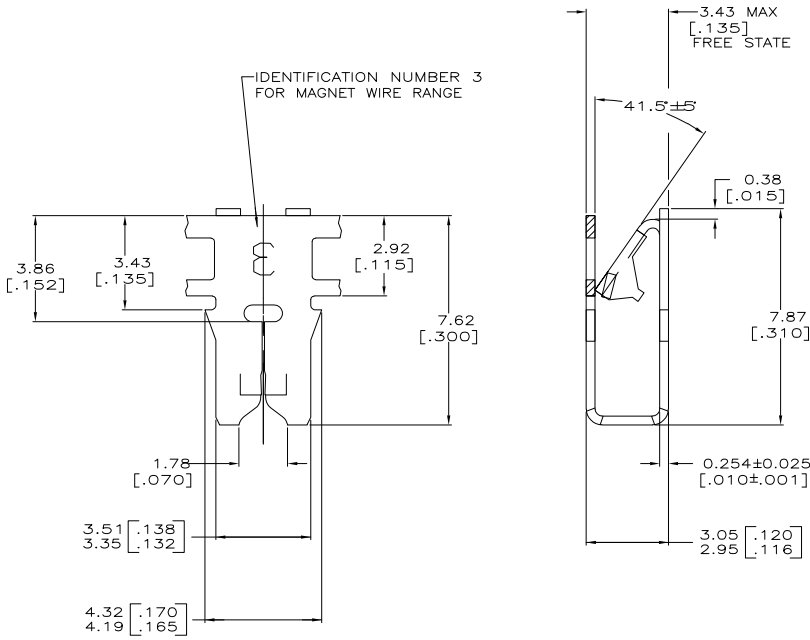
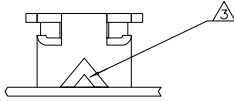
2

1

THIS DRAWING IS UNPUBLISHED. RELEASED FOR PUBLICATION
 © COPYRIGHT BY TYCO ELECTRONICS CORPORATION. ALL RIGHTS RESERVED.

LOC	DIST	REVISIONS			
P	LTR	DESCRIPTION	DATE	MIN	APD
AF	50	C1	REVISED PER ECR-06-014088	19JUN06	MF KR

- 1 CONTINUOUS STRIP ON REELS WITH TERMINALS LOCATED ON 5.50±0.08 [.220±.003] CENTERS.
- △1 SLOT ACCEPTS 0.16-0.18mm [#34-#33] AWG COPPER MAGNET WIRE. 2 WIRES OF THE SAME SIZE PER SLOT.
- △2 POKE-IN ACCEPTS A 0.50-0.90mm² [#20-#18] AWG SLOID OR FUSED STRANDED LEAD WIRE.
- △3 REELED WITH PAPER ON PLASTIC REEL.
- △4 FOREIGN PRODUCTION ONLY.
- △5 0.002032 [.000080] MIN TIN PLATE.



-	△4	63662-2	△5
△6		63662-1	
FINISH		PART NUMBER	

THIS DRAWING IS A CONTROLLED DOCUMENT.		DWG: MICHAEL S. FEYER 19JUN2006 OK: KURT A. RANDOLPH 19JUN2006 NAME: KURT A. RANDOLPH PRODUCT SPEC: 108-2012 APPLICATION SPEC: 114-2046 HEIGHT: -	Tyco Electronics Corporation Harrisburg, PA 17105-3608 TERMINAL, POKE-IN, 300 SERIES MAG-MATE	SIZE: A2 QAGE CODE: 00779 DRAWING NO: C=63662	RESTRICTED TO: -
DIMENSIONS: INCHES	0 PLG ± - 1 PLG ± - 2 PLG ± 0.25 [.010] 3 PLG ± - 4 PLG ± - ANGLES ± -	MATERIAL: 4M BRASS	FINISH: SEE TABLE	CUSTOMER DRAWING	SCALE: 10:1 SHEET: 1 of 1 REV: C1

AMP 1471-9 REV 31MM2000

63662