

4

3

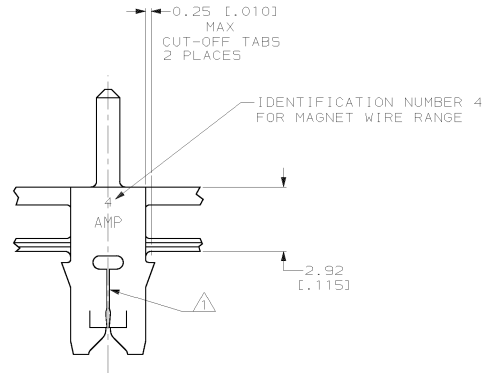
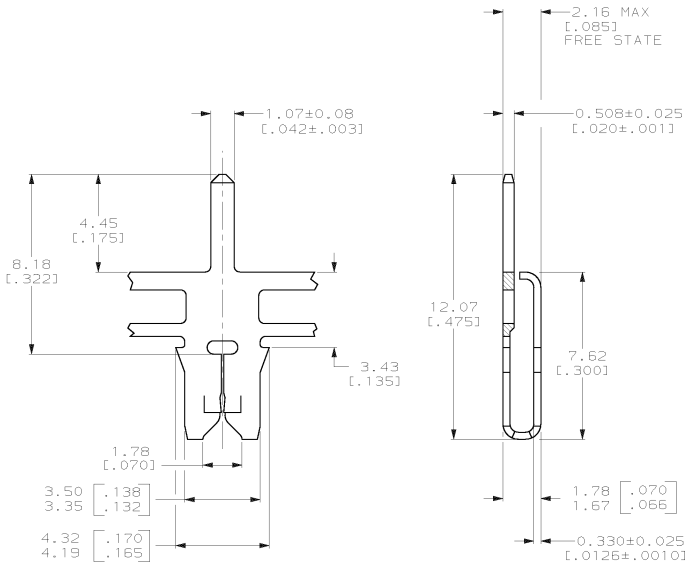
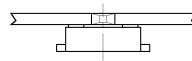
2

1

THIS DRAWING IS UNPUBLISHED. RELEASED FOR PUBLICATION. (C) COPYRIGHT IS BY AMP INCORPORATED. ALL RIGHTS RESERVED.

REV	DATE	BY	APP'D	DESCRIPTION
AF	50			
A				REVISED PER 053A-0225-00

- 1 SLOT TERMINATES 0.18-0.23mm [#33-#31] AWG COPPER MAGNET WIRE EITHER SINGLE OR DOUBLE OF THE SAME SIZE.
- 2 CONTINUOUS STRIP ON REELS WITH TERMINALS LOCATED ON 8.38±0.08 [.330±.003] CENTERS.
- 3 0.002032 [.000080] MIN TIN OVER 0.00127 [.000050] MIN NICKEL.



1217302-1
PART NUMBER

THIS DRAWING IS A CONTROLLED DOCUMENT.		DWG: MICHAEL S. FEHNER 2/24/2000 DESIGNED BY: FURT A. RANDOLPH 2/24/2000 DRAWN BY: FURT A. RANDOLPH 2/24/2000	AMP AMP Incorporated Harrisburg, PA 17105-3608
DIMENSIONS: mm (INCHES) DECIMALS: 0.001 (0.0005) ANGLES: 0.001 (0.0005)	DIMENSIONS: 0.001 (0.0005) DECIMALS: 0.001 (0.0005) ANGLES: 0.001 (0.0005)	PRODUCT SPEC: 108-2012 APPLICATION SPEC: 114-2046 WEIGHT: -	TITLE: SOLDER TAB, 1.07 [.042], 300 SERIES MAG-MATE™ SIZE: A2 CASE CODE: 1217302 DRAWING NO: 1217302 RESTRICTED TO: -
MATERIAL: 4M PRE-MILLED BRASS		FINISH: -	SCALE: 8:1 SHEET: 1 OF 1 REV: A

1217302

B

A