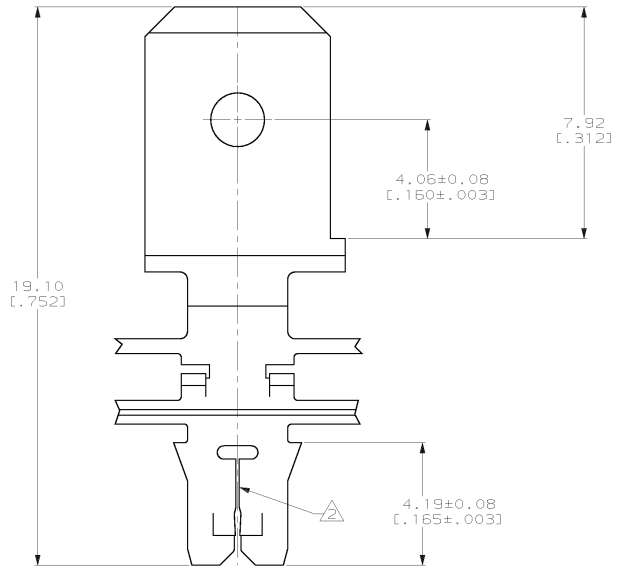
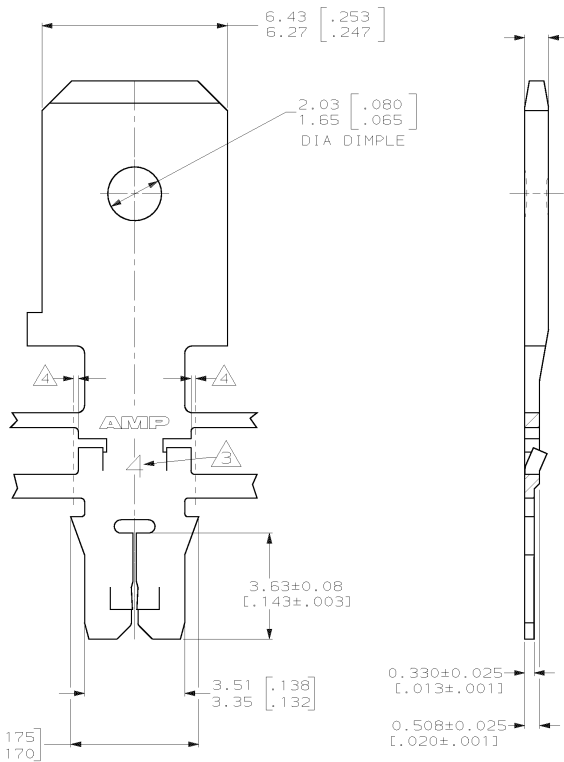


THIS DRAWING IS UNPUBLISHED. RELEASED FOR PUBLICATION .19
 © COPYRIGHT 19 BY AMP INCORPORATED. ALL INTERNATIONAL RIGHTS RESERVED.

LOC	DIST	P	F	ZONE	LTR	REVISIONS	DATE	APPR
AF	50					REVISED PER 063A-0456-01		

- 1 CONTINUOUS STRIP ON REELS WITH TERMINALS LOCATED ON 8.38±0.08 [.330±.003] CENTERS
- 2 SLOT ACCEPTS 0.18-0.23mm [#33-#31] AWG COPPER MAGNET WIRE. TWO WIRES OF THE SAME SIZE MAX PER SLOT
- 3 IDENTIFICATION NUMBER 4 FOR THE MAGNET WIRE SLOT SIZE
- 4 0.25 [.010] MAX CARRIER CUT-OFF TABS.
- 5 PREPRODUCTION - F.A.S.R. REQUIRED.



082 PRE-MILLED BRASS	63744-2
4M PRE-MILLED BRASS	63744-1
MATERIAL	PART NO

DO NOT SCALE PRINT. UNLESS SPECIFIED DIMENSIONS IN mm (INCHES) TOLERANCES ON: 2 PLC DEC ± 0.13 (.005) 3 PLC DEC ± - ANGLES ± -	DR 9-1-93 L.A. MAYER	AMP Incorporated Harrisburg, PA 17105-3608 NAME TAB, 6.35 [.250] FASTON™ MAG-MATE™ Slim Line
MATERIAL SEE TABLE	CHK 9-1-93 M.S. FEHER	
FINISH 0.002032 [.000080] MIN TIN	APPD 9-1-93 A. HUNT III	
	APPD 9-1-93 T.L. SHUTTER	SIZE CAGE CODE DRAWING NO C 00779 C-63744
	APPLICATION SPEC 114-2140	SCALE 10:1 SHEET 1 OF 1
	WEIGHT -	

THIS DRAWING IS A CONTROLLED DOCUMENT FOR AMP INCORPORATED. IT IS SUBJECT TO CHANGE AND THE CONTROLLING ENGINEERING ORGANIZATION SHOULD BE CONTACTED FOR THE LATEST REVISION.