

4

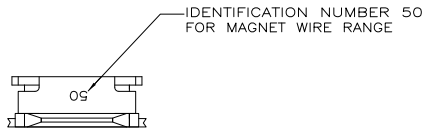
3

2

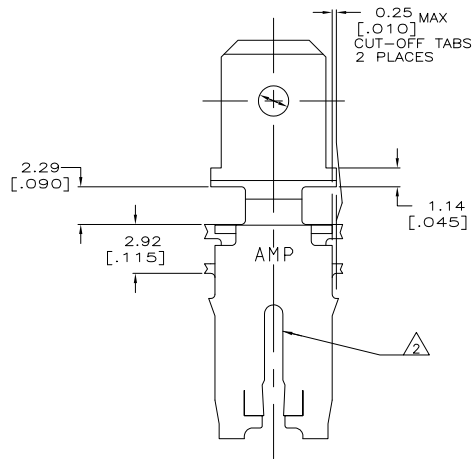
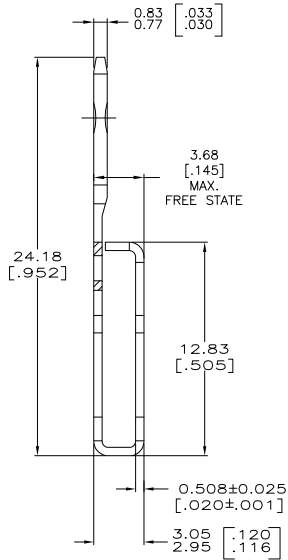
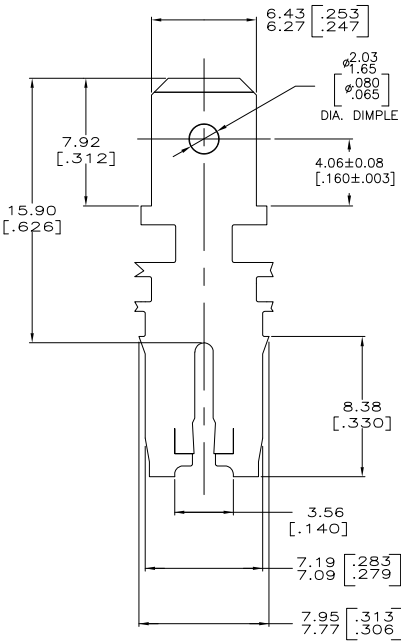
1

THIS DRAWING IS UNPUBLISHED. RELEASED FOR PUBLICATION  
 BY TYCO ELECTRONICS CORPORATION. ALL RIGHTS RESERVED.

LOC		DIBT		REVISIONS		
F	LTR	F	LTR	DESCRIPTION	DATE	BY
AF	50	F	LTR	REVISED PER ECR-06-010427	01SEP06	HMR KR



- CONTINUOUS STRIP ON REELS WITH TERMINALS LOCATED ON  $8.38 \pm 0.08$  [.330 ± .003] CENTERS.
- SLOT ACCEPTS 2.05mm [#12] COPPER MAGNET WIRE. SINGLE WIRE ONLY.
- AFTER INSERTION INTO PLASTIC HOLDER TAB PORTION MUST BE BENT OVER 45° TO 90° OR POTTED-IN TO PREVENT PULL-OUT WHEN MATING RECEPTACLE IS DISCONNECTED.
- VARNISH RESIST OVER 0.002032 [.000080] MIN TIN.



63425-1  
PART NUMBER

THIS DRAWING IS A CONTROLLED DOCUMENT.		DRN	SOACHAVENDRA	01SEP06	Tyco Electronics Corporation Harrisburg, PA 17105-3608	
DIMENSIONS: mm [INCHES]		CHK	KURT A. RANDOLPH		TAB, 6.35[.250] FASTON,™ MAG-MATE™	
TOLERANCES UNLESS OTHERWISE SPECIFIED:		APPD	KURT A. RANDOLPH		SIZE	
0 PLC	±	PRODT SPEC	108-2053		CAGE CODE	
1 PLC	±	APPLICATION SPEC	114-2066		DRAWING NO	
2 PLC	±	WEIGHT			A2 00779 C=63425	
3 PLC	±	FINISH			RESTRICTED TO	
4 PLC	±				-	
ANGLES	±				SCALE	
					6:1 SHEET	
					1 of 1 REV	
					F	

AMP 1471-9 REV 31MM2000

63425

A