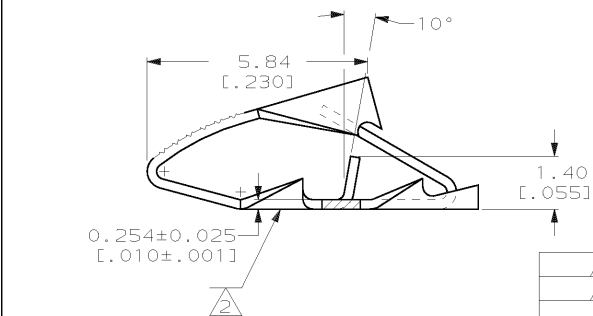
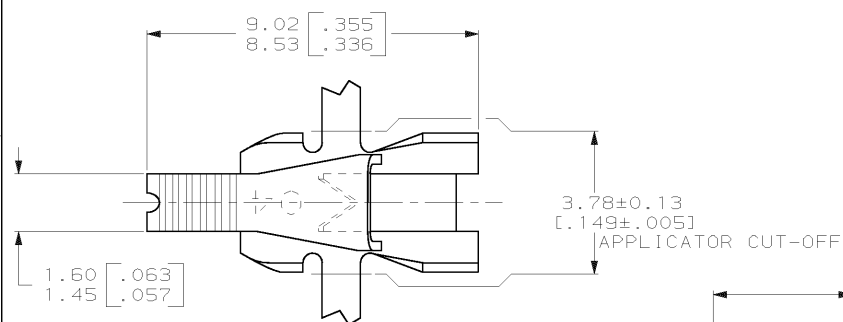


DRAWING MADE IN THIRD ANGLE PROJECTION

THIS DRAWING IS UNPUBLISHED. RELEASED FOR PUBLICATION, 19  
 © COPYRIGHT 19 BY AMP INCORPORATED. ALL INTERNATIONAL RIGHTS RESERVED.

LOC	DIST	REVISIONS				DATE	APPD
P	F	ZONE	LTR	DESCRIPTION			
AF	50		R	ADDED -3 PER 063A-0052-99	20JUL99	JR/KR	



- CONTINUOUS STRIP ON REELS WITH TERMINALS LOCATED ON 6.10±0.08 [.240±.003] CENTERS.
- IDENTIFICATION NUMBER (04) FOR MAGNET WIRE RANGE.
- SOLID OR FUSED STRANDED LEAD WIRE 0.3-0.9mm<sup>2</sup> [#22-#18] AWG.
- 0.001016 [.000040] MIN TIN.
- 0.002032 [.000080] MIN TIN.

4	SPLICE FREE	STANDARD REELS	0.02-0.06mm	[#52-#42] AWG	62781-3
4	SPLICE FREE	PLASTIC REELS	0.02-0.06mm	[#52-#42] AWG	62781-2
5	WITH SPLICE	STANDARD REELS	0.02-0.06mm	[#52-#42] AWG	62781-1
FINISH	SPLICE	REELING	COPPER MAGNET WIRE RANGE		PART NUMBER

**METRIC**

DO NOT SCALE PRINT.  
 UNLESS SPECIFIED  
 DIMENSIONS IN MM [INCHES]  
 TOLERANCES ON:  
 1. PLC DEC ±  
 2. PLC DEC ±  
 3. PLC DEC ± 0.25 (.010)  
 ANGLES ± -  
 MATERIAL  
 H02 HARD BRASS  
 FINISH  
 SEE TABLE

DR 9/27/89  
 MICHAEL S. FEHER  
 CHK 10/12/89  
 JEFF R. RUTH  
 APPD 10/12/89  
 NELSON E. NEFF  
 APPD 10/12/89  
 TERRY L. SMUTTER  
 PRODUCT SPEC  
 108-2016  
 APPLICATION SPEC  
 114-2047  
 WEIGHT -

**AMP** AMP INCORPORATED  
 Harrisburg, Pa. 17105  
 NAME  
 TERMINAL, POKE-IN,  
 MINI MAG-MATE™  
 SIZE **B** CAGE CODE 00779 DRAWING NO 62781  
 SCALE 10:1 SHEET 1 OF 1