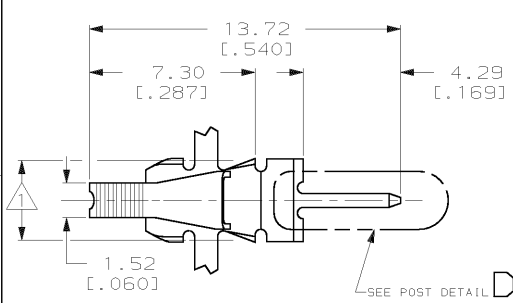


DRAWING MADE IN THIRD ANGLE PROJECTION

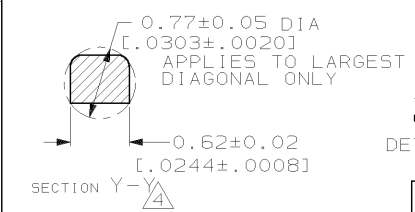
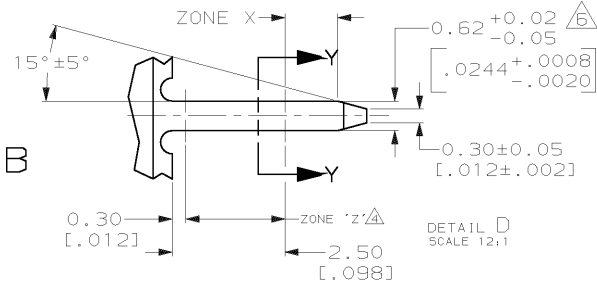
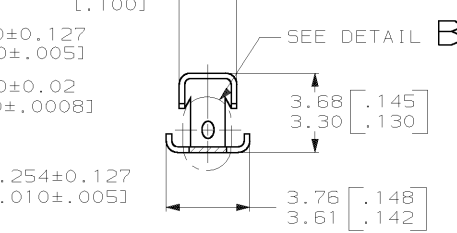
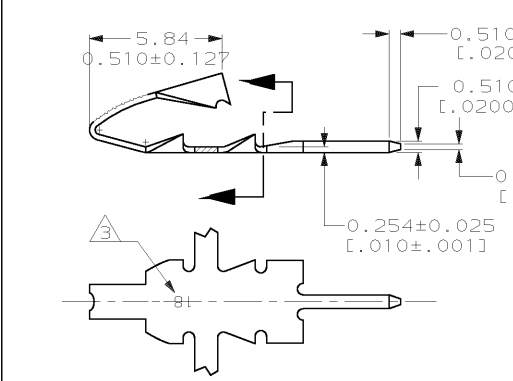
THIS DRAWING IS UNPUBLISHED. RELEASED FOR PUBLICATION, 19 .  
 © COPYRIGHT 19 BY AMP INCORPORATED. ALL INTERNATIONAL RIGHTS RESERVED.

LOC	DIST	REVISIONS			
ZONE	LTR	DESCRIPTION	DATE	APPD	
AF	50	REL PER 063A-0250-02	15MAY02	JR/KR	



△ DIMENSIONS OF SECTION Y-Y APPLY IN ZONE Z ONLY.  
 △ DIMENSION APPLIES IN ZONE X ONLY.

- 1 3.78±0.13 [.149±.005] APPLICATOR CUT-OFF.
- 2 CONTINUOUS STRIP ON REELS WITH TERMINALS LOCATED ON 6.10±0.08 [.240±.003] CENTERS.
- 3 IDENTIFICATION NUMBER 18 FOR MAGNET WIRE RANGE.



THIS DRAWING IS A CONTROLLED DOCUMENT FOR AMP INCORPORATED. IT IS SUBJECT TO CHANGE AND THE CONTROLLING ENGINEERING ORGANIZATION SHOULD BE CONTACTED FOR THE LATEST REVISION.

	MAGNET WIRE RANGE	MATERIAL	PART NO
	0.10-0.25mm [#38-#30] AWG	H04 PRE-MILLED PHOS. BRONZE	63675-4
OBSOLETE	0.10-0.25mm [#38-#30] AWG	H04 PRE-MILLED PHOS. BRONZE	63675-3
OBSOLETE	0.10-0.25mm [#38-#30] AWG	H04 PRE-MILLED PHOS. BRONZE	63675-2
OBSOLETE	0.10-0.25mm [#38-#30] AWG	H02 PRE-MILLED BRASS	63675-1

DO NOT SCALE PRINT. UNLESS SPECIFIED DIMENSIONS IN mm (INCHES) TOLERANCES ON: 1. PLC DEC ± 0.25 (.010) 2. PLC DEC ± .1° ANGLES ± 1°	DR 10/6/92 MICHAEL S. FEHER CHK 10/7/92 JEFF R. RUTH APPD 10/12/92 NELSON E. NEFF APPD 10/12/92 TERRY L. SHUTTER
MATERIAL SEE ABOVE	PRODUCT SPEC 108-2016
FINISH 0.001016 [.000040] MIN TIN PLATE	APPLICATION SPEC 114-2047
	WEIGHT -

<b>AMP</b> AMP Incorporated Harrisburg, PA 17105-3608		
NAME POST, 0.62 [.024] X 0.51 [.020], MINI MAG-MATE™		
SIZE B	CAGE CODE 00779	DRAWING NO C=63675
SCALE 6:1	SHEET 1 OF 1	