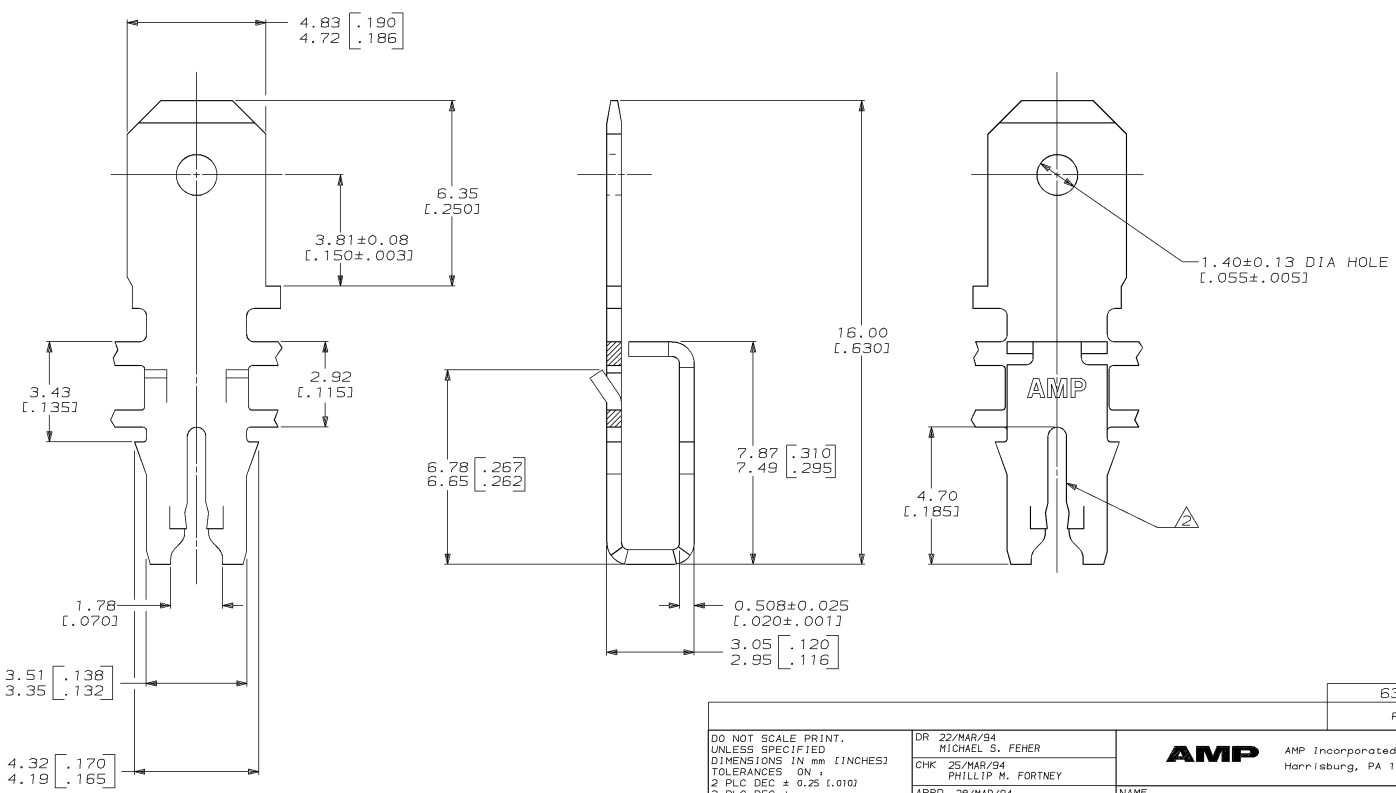
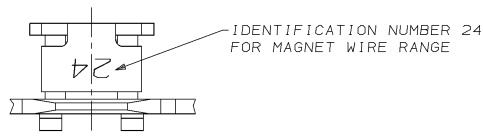


DRAWING MADE IN THIRD ANGLE PROJECTION  
 THIS DRAWING IS UNPUBLISHED. RELEASED FOR PUBLICATION .19  
 © COPYRIGHT 19 BY AMP INCORPORATED. ALL INTERNATIONAL RIGHTS RESERVED.

LOC		DIST		ZONE		LTR		REVISIONS		DATE	APPD
AF	50	P	F					A	REL TO PRODUCTION PER 0710-0158-94	24/JUN/94	RB/NN

- CONTINUOUS STRIP ON REELS WITH TERMINALS LOCATED ON 5.59±0.08 [.220±.003] CENTERS. SLOT TERMINATES A SINGLE MAGNET WIRE ONLY. COPPER RANGE: 0.91-1.15mm [#19-#17] AWG.
- AFTER INSERTION INTO PLASTIC HOLDER TAB PORTION MUST BE BENT OVER 45° TO 90° OR POTTED-IN TO PREVENT PULL-OUT WHEN MATING RECEPTACLE IS DISCONNECTED.



THIS DRAWING IS A CONTROLLED DOCUMENT FOR AMP INCORPORATED. IT IS SUBJECT TO CHANGE AND THE CONTROLLING ENGINEERING ORGANIZATION SHOULD BE CONTACTED FOR THE LATEST REVISION.

DO NOT SCALE PRINT. UNLESS SPECIFIED DIMENSIONS IN mm [INCHES] TOLERANCES ON : 2 PLC DEC ± 0.25 (.010) 3 PLC DEC ± - ANGLES ± -		DR 22/MAR/94 MICHAEL S. FEHER	63782-1 PART NO	
MATERIAL 4M BRASS	CHK 25/MAR/94 PHILLIP M. FORTNEY	APPD 28/MAR/94 NELSON E. NEFF	AMP AMP Incorporated Harrisburg, PA 17105-3608	
FINISH 0.002032 [.000080] MIN TIN PER MIL-T-10727	APPD 28/MAR/94 TERRY L. SHUTTER	PRODUCT SPEC 108-2012	NAME TERMINAL, TAB, 4.75 [.187] FASTON™ MAG-MATE™	
APPLICATION SPEC 114-2067	SIZE C 00779	DRAWING NO C-63782	SHEET 1 OF 1	
WEIGHT -	SCALE 10:1	CUSTOMER DRAWING		