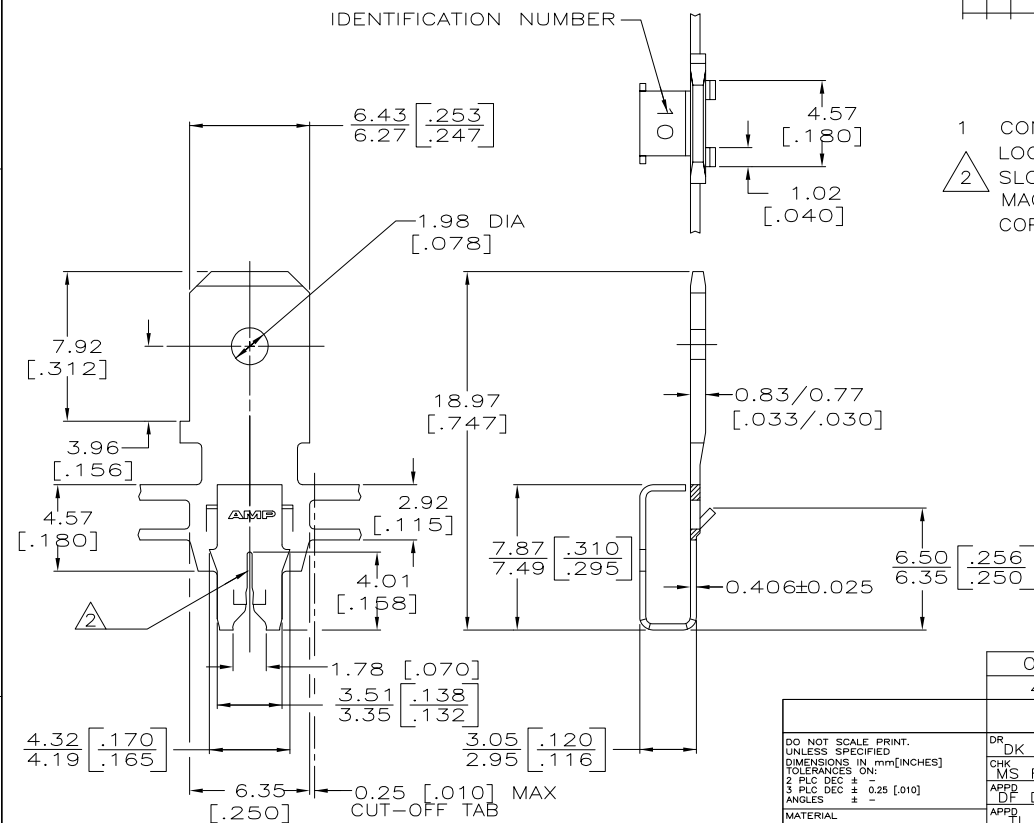


DRAWING MADE IN THIRD ANGLE PROJECTION

THIS DRAWING IS UNPUBLISHED. RELEASED FOR PUBLICATION .19  
 © COPYRIGHT 19 BY AMP INCORPORATED. ALL INTERNATIONAL RIGHTS RESERVED.

LOC		DIST		REVISIONS				DATE	APPD
ZONE	LTR	DESCRIPTION	REV	PER	ECR	06-010492	020CT06	JR/KR	
AF	50								



- 1 CONTINUOUS STRIP ON REELS WITH TERMINALS LOCATED ON 8.38 [.330] CENTERS.
- 2 SLOT TERMINATES EITHER SINGLE OR DOUBLE MAGNET WIRES OF THE SAME TYPE AND SIZE, COPPER RANGE IS 0.36-0.57mm [#27-#23] AWG

**METRIC**

082 PRE-MILLED BRASS	63571-2
4M PRE-MILLED BRASS	63571-1

MATERIAL PART NO

DO NOT SCALE PRINT. UNLESS SPECIFIED DIMENSIONS IN mm(INCHES) TOLERANCES ON: 2. PLC DEC ± .025 [.010] ANGLES ± -	DR DK SCHRUM 2/8/90	<b>AMP</b> AMP INCORPORATED Harrisburg, Pa. 17105	NAME TAB, 6.35 [.250] FASTON,™ MAG-MATE™
	CHK MS FEHER 2/9/90		
MATERIAL SEE TABLE	APPD DF DECKER 2/9/90	SIZE <b>B</b> 00779	DRAWING NO 63571
FINISH 0.002032 [.000080] MIN TIN PER MIL-T-10727	APPD TL SHUTTER 2/12/90	SCALE 5:1	SHEET 1 OF 1
	PRODUCT SPEC -		
	APPLICATION SPEC 114-2094		
	WEIGHT -		

AMP 1470-15 REV 3-87 IronNiche/020B30.170544 (YYMMDD.HHMMSS) from  
 CompServision, Inc., Medusa Revision 12.2.01

CUSTOMER DRAWING