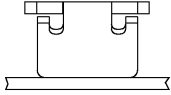


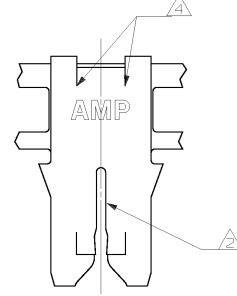
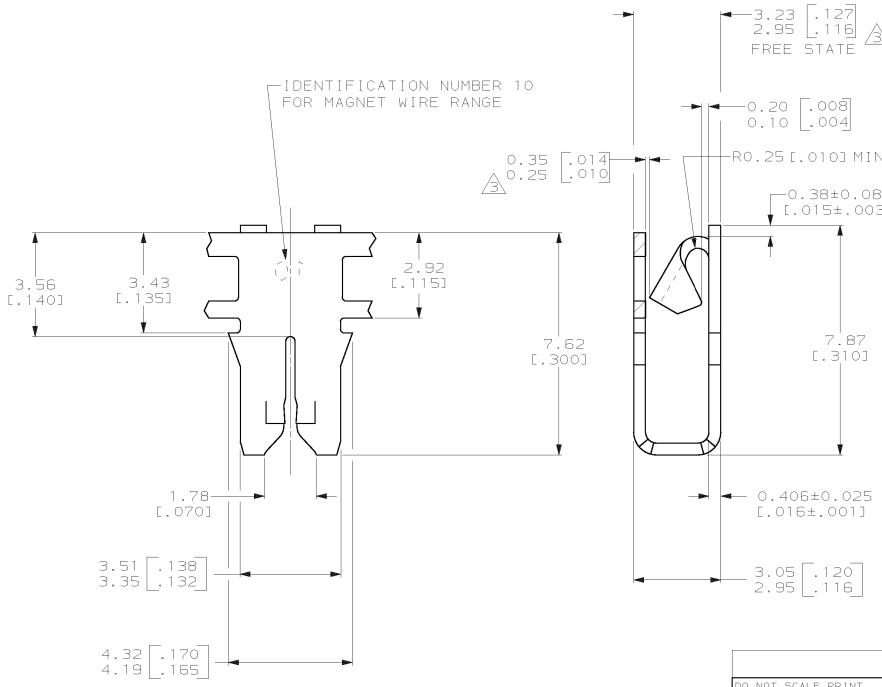
THIS DRAWING IS UNPUBLISHED. RELEASED FOR PUBLICATION, 19
 © COPYRIGHT 19 BY AMP INCORPORATED. ALL INTERNATIONAL RIGHTS RESERVED.

LOC	DIST	P	F	ZONE	LTR	DESCRIPTION	DATE	APPO
AF	50					REVISED PER 063A-0451-00	24RLO	HF/KR



- 1 CONTINUOUS STRIP ON REELS (NO SPLICES) WITH TERMINALS LOCATED ON 5.59±0.08 [.220±.003] CENTERS.
- △ SLOT ACCEPTS 0.36-0.51mm [#27-#24] AWG COPPER MAGNET WIRE. SINGLE OR DOUBLE WIRE OF THE SAME SIZE AND TYPE.
 - △ GAGING: GO, 0.241 [.0095] NO/GO, 0.318 [.0125].
 - △ FREE STATE AND GAP AT CARRIER SIDE TO BE MAINTAINED PER CHART PROVIDED.
- | FREE STATE | CARRIER GAP |
|-----------------------|-----------------------|
| 2.95-3.12 [.116-.123] | 0.25-0.35 [.010-.014] |
| 3.15 [.124] | 0.28-0.35 [.011-.014] |
| 3.18 [.125] | 0.30-0.35 [.012-.014] |
| 3.20 [.126] | 0.33-0.35 [.013-.014] |
| 3.23 [.127] | 0.35 [.014] |
- CARRIER SIDE GAP 0.25-0.35 [.010-.014] TO BE CHECKED WHEN FREE STATE IS COMPRESSED TO 3.12 [.123].

△ NO CRACKS OR TEARS PERMISSIBLE ALONG SHEAR AND BEND LINE



63861-1
PART NO

DO NOT SCALE PRINT. UNLESS SPECIFIED DIMENSIONS IN MM (INCHES) TOLERANCES ON ± 2 PL C DEC ± 0.25 (.010) 3 PL C DEC ± - ANGLES ± -		DR 07/JUN/95 MICHAEL S. FEHER		AMP Incorporated Harrisburg, PA 17105-3608	
MATERIAL UNS C511 H04 PHOS. BRONZE AMP SPEC 100-221		CHK 08/JUN/95 JEFF R. RUTH			
FINISH 0.002032 [.000080] MIN TIN PLATE		APPD 08/JUN/95 KURT A. RANDOLPH		NAME TERMINAL, POKE-IN, 300 SERIES MAG-MATE™	
APPLICATION SPEC 114-2046		PRODUCT SPEC 108-2012		SIZE C	CAGE CODE 00779
WEIGHT -		DRAWING NO C-63861		SCALE 10:1	SHEET 1 OF 1

THIS DRAWING IS A CONTROLLED DOCUMENT FOR AMP INCORPORATED. IT IS SUBJECT TO CHANGE AND THE CONTROLLING ENGINEERING ORGANIZATION SHOULD BE CONTACTED FOR THE LATEST REVISION.