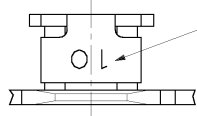


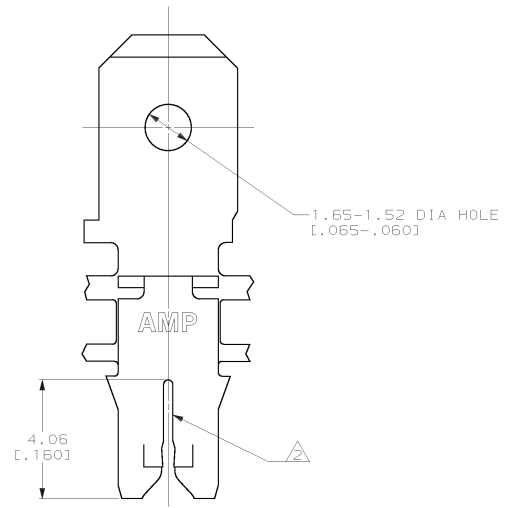
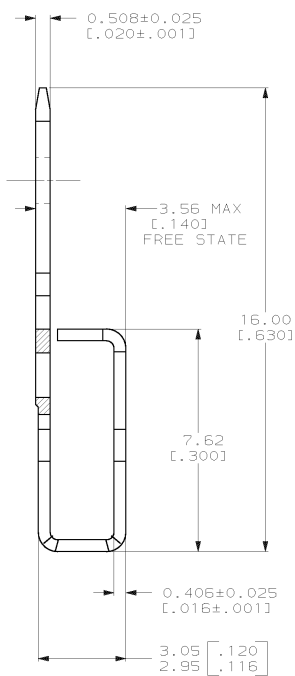
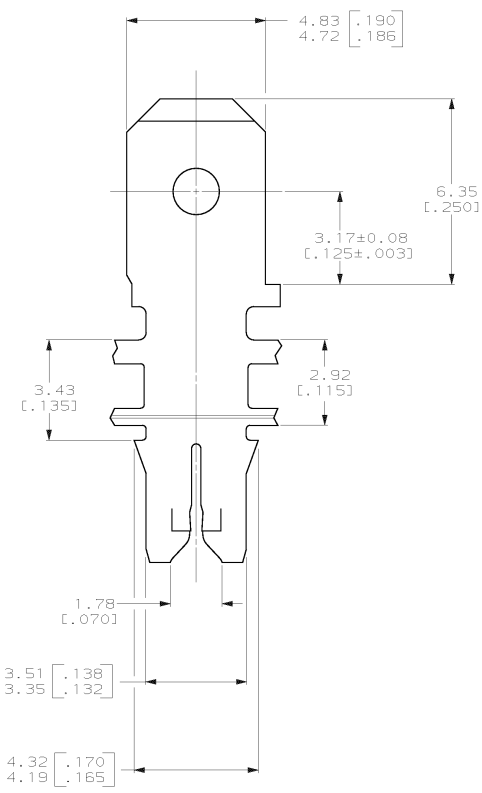
THIS DRAWING IS UNPUBLISHED. RELEASED FOR PUBLICATION .19  
 © COPYRIGHT 19 BY AMP INCORPORATED. ALL INTERNATIONAL RIGHTS RESERVED.

REVISIONS									
LOC	DIST	P	F	ZONE	LTR	DESCRIPTION	DATE	APPR	REV
AF	50					D	REV PER 0L10-0043-97		

- CONTINUOUS STRIP ON REELS WITH TERMINALS LOCATED ON 5.59±0.08 [.220±.003] CENTERS
  - SLOT TERMINATES EITHER A SINGLE OR DOUBLE MAGNET WIRE OF THE SAME SIZE AND TYPE. COPPER RANGE: 0.36\_0.57mm [#27-#23] AWG.
  - AFTER INSERTION INTO PLASTIC HOLDER TAB PORTION MUST BE BENT OVER 45° TO 90° OR POTTED-IN TO PREVENT PULL-OUT WHEN MATING RECEPTACLE IS DISCONNECTED.
- △ VARNISH RESIST OVER 0.002032 [.000080] MIN TIN PER MIL-T-10727.
- △ 0.002032 [.000080] MIN TIN



IDENTIFICATION NUMBER 10 FOR MAGNET WIRE RANGE



DO NOT SCALE PRINT.  
 UNLESS SPECIFIED  
 DIMENSIONS IN mm (INCHES)  
 TOLERANCES ON:  
 2 PLC DEC ± 0.25 (.010)  
 3 PLC DEC ±  
 ANGLES ± -

MATERIAL  
 H03 PRE-MILLED BRASS

FINISH  
 SEE TABLE

DR 8/26/92 MICHAEL S. FEHER
CHK 8/26/92 JEFF R. RUTH
APPD 8/28/92 NELSON E. NEFF
APPD 8/28/92 TERRY L. SHUTTER
PRODUCT SPEC 108-2012
APPLICATION SPEC 114-2046
WEIGHT -

△ 5		63664-2	
FINISH		PART NO	
AMP		AMP Incorporated Harrisburg, PA 17105-3608	
NAME TERMINAL, TAB, 4.75 [.187] FASTON, MAG-MATE			
SIZE	CAGE CODE	DRAWING NO	
©	00779	©-63664	
SCALE	10:1	SHEET	1 OF 1

THIS DRAWING IS A CONTROLLED DOCUMENT FOR AMP INCORPORATED. IT IS SUBJECT TO CHANGE AND THE CONTROLLING ENGINEERING ORGANIZATION SHOULD BE CONTACTED FOR THE LATEST REVISION.