

4

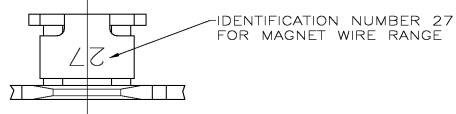
3

2

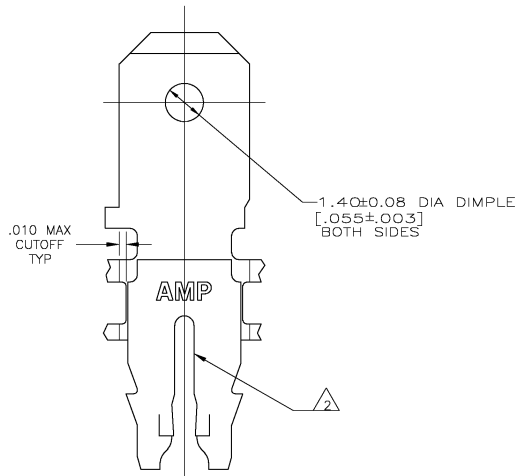
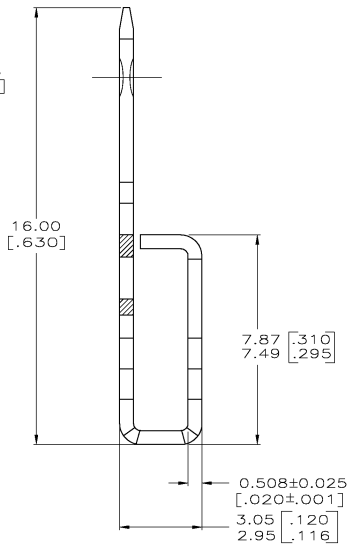
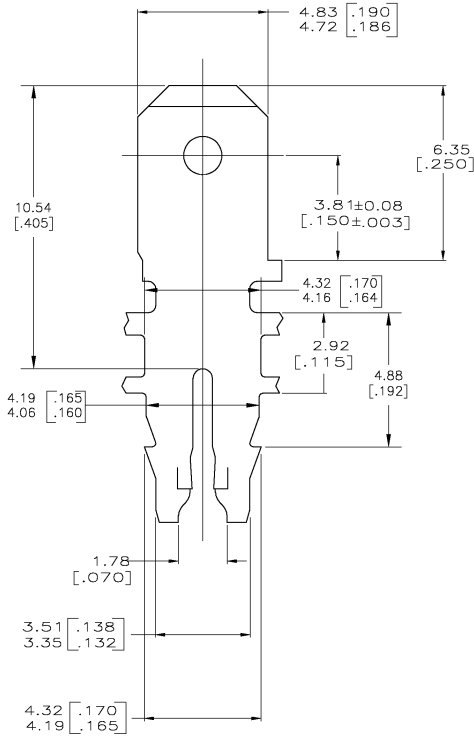
1

THIS DRAWING IS UNPUBLISHED. RELEASED FOR PUBLICATION. BY TYCO ELECTRONICS CORPORATION. ALL RIGHTS RESERVED.

LOC		DIBT		REVISIONS			
AF	50	P	LTR	DESCRIPTION	DATE	BY	APP'D
		D		REV PER 063A-1012-04	03JAN05	JR	KR



- CONTINUOUS STRIP ON REELS WITH TERMINALS LOCATED ON  $5.59 \pm 0.08$   $[.220 \pm .003]$  CENTERS.
- SLOT TERMINATES EITHER A SINGLE OR DOUBLE MAGNET WIRE OF THE SAME SIZE AND TYPE. COPPER RANGE: 0.91-1.15mm [#19-#17] AWG.
- AFTER INSERTION INTO PLASTIC HOLDER TAB PORTION MUST BE BENT OVER 45° TO 90° OR POTTED TO PREVENT PULL-OUT WHEN MATING RECEPTACLE IS DISCONNECTED.
- SPECIAL CAVITY ANVIL HEIGHT REQUIRED  $3.30 \pm 0.07$   $[.130 \pm .003]$  REF APPLICATION SPEC 114-2046, SEC. 3.2, NOTE 7



1742160-1 PART NUMBER

THIS DRAWING IS A CONTROLLED DOCUMENT.		DW: MICHAEL S. FEHLER 16AUG2004		Tyco Electronics Corporation	
DIMENSIONS: INCHES		CHK: KURT A. RANDOLPH 16AUG2004		Harrisburg, Pa 17105-3608	
TOLERANCE UNLESS OTHERWISE SPECIFIED:		APP'D: KURT A. RANDOLPH 16AUG2004		TERMINAL, TAB, 4.75 [.187] FASTON, 300 SERIES MAG-MATE	
0 PLG ± .005		PROJECT SPEC: 108-2012		SHEET: A2	
1 PLG ± .005		APPLICATION SPEC: 114-2046		CASE CODE: 00779	
2 PLG ± .005		HEIGHT: -		DRAWING NO: 1742160	
3 PLG ± .005		FINISH: MIN TIN PLATE		SCALE: 10:1	
4 PLG ± .005		CUSTOMER DRAWING		SHEET: 1 OF 1	
ANGLES ± .005				REV: D	

AMP 1421-9 REV 31MAR2000

1742160

A