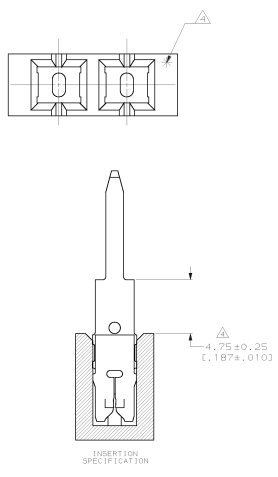
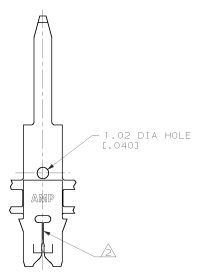
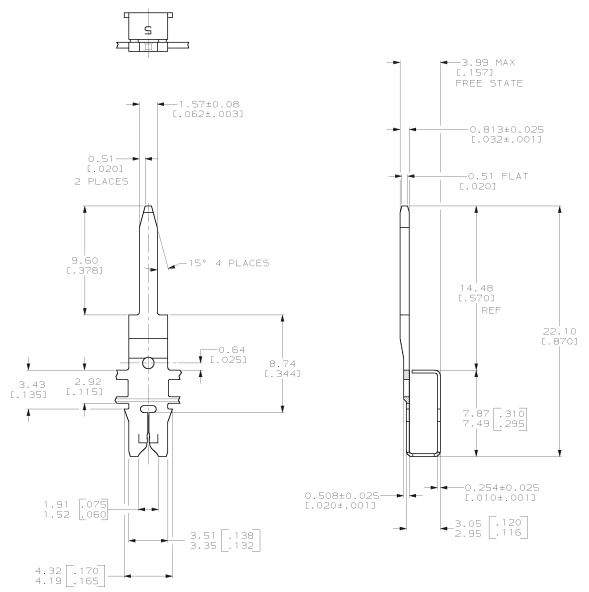


MAKING MADE IN CHINA UNDER PROTECTION
 THIS DRAWING IS UNCLASSIFIED
 © COPYRIGHT 19 BY AMP INCORPORATED. ALL INTERNATIONAL RIGHTS RESERVED.

REVISED PER		DATE	APPROVED
E	REVISED PER 062A-0035-99		

- CONTINUOUS STRIP ON REELS WITH TERMINALS LOCATED ON 6.00 ± 0.08 [2.36 ± .003] CENTERS.
 - SLOT TERMINATES EITHER A SINGLE OR DOUBLE MAGNET WIRE OF THE SAME TYPE AND SIZE. COPPER 0.23mm [9.31] AVG.
 - AFTER INSERTION INTO PLASTIC HOLDER, TAB PORTION MUST BE BENT OVER 45° TO 90° OR POTTED-IN TO PREVENT PULL-OUT WHEN MATING RECEPTACLE IS DISCONNECTED.
- △ POINT OF MEASUREMENT LOCATED APPROXIMATELY AS SHOWN



DO NOT SCALE PRINT. UNLESS SPECIFIED DIMENSIONS IN MM (INCHES) TOLERANCES: DR L 2 FILE DEC # 0.10(.004) 3 FILE DEC # MILES # -		DR 2/JAN/95 R. GREGORY CHR 2/JAN/95 P.L. FERGUSON APPD 2/JAN/95 N.E. NEFF APPD 2/JAN/95 P.L. SMITHER PRODUCT SPEC 108-2012	AMP Incorporated Harrisburg, PA 17105-3608 NAME TAB, 1.57(0.62), 300 SERIES MAG-MATE™
MATERIAL 4M PRE-MILLED BRASS	FINISH 0.0020(0.00080) MIN TIN	APPLICATION SPEC 114-2048	SIZE 00779 CASE CODE 63810 DRAWING NO 63810-1 SCALE 5:1 SHEET 1 OF 1

THIS DRAWING IS A CONTROLLED DOCUMENT FOR AMP INCORPORATED. IT IS SUBJECT TO CHANGE AND THE CONTROLLING INDUSTRY ORGANIZATION SHOULD BE CONTACTED FOR THE LATEST REVISION.

CUSTOMER DRAWING