

4

3

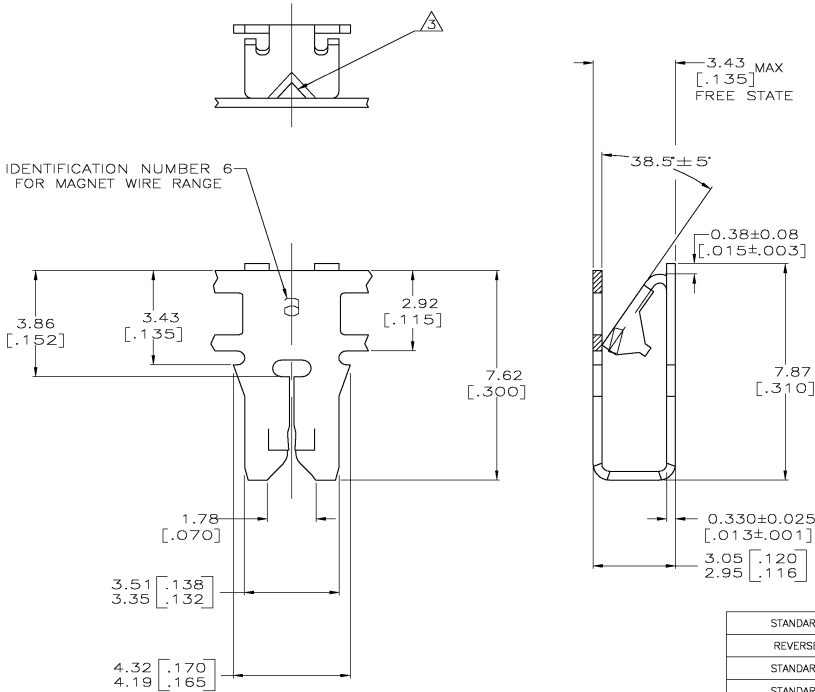
2

1

THIS DRAWING IS UNPUBLISHED. RELEASED FOR PUBLICATION  
 © COPYRIGHT BY TYCO ELECTRONICS CORPORATION. ALL RIGHTS RESERVED.

LOC	DIST	REVISIONS			
P	LTR	DESCRIPTION	DATE	BY	APP'D
AF	50	AG	ADDED -7 PER 0G3A-0010-03	08JAN03	MF KR

- CONTINUOUS STRIP ON REELS WITH TERMINALS LOCATED ON 5.59±0.08 [.220±.003] CENTERS. SLOT TERMINATES EITHER A SINGLE OR DOUBLE MAGNET WIRE OF THE SAME SIZE AND TYPE. COPPER RANGE: 0.25-0.36mm [#30-#27] AWG. POKE-IN ACCEPTS A 0.5-0.9mm² [#20-#18] AWG SOLID OR FUSED STRANDED LEAD WIRE.
- △ SPECIAL REEL QUANTITY - AMP SPAIN PRODUCTION ONLY.
  - △ PRELIMINARY - NOT FOR PRODUCTION.



STANDARD	WITH PAPER	0.002032 [.000080] MIN TIN PLATE	H04 PHOS BRONZE	△ 62429-7
REVERSE	WITH PAPER	0.002032 [.000080] MIN TIN PLATE	4M BRASS	△ 62429-6
STANDARD	WITH PAPER	0.002032 [.000080] MIN TIN PLATE	4M BRASS	62429-5
STANDARD	PLASTIC REEL W/PAPER	UNPLATED	4M BRASS	62429-4
-	-	-	-	-
STANDARD	WITHOUT PAPER	0.002032 [.000080] MIN TIN PLATE	4M BRASS	62429-2
STANDARD	WITH PAPER	0.002032 [.000080] MIN TIN PLATE	4M BRASS	62429-1
REELING DIRECTION	REELING	FINISH	MATERIAL	PART NUMBER

THIS DRAWING IS A CONTROLLED DOCUMENT.

DIMENSIONS: INCHES 0 DEC 1 DEC 2 DEC 3 DEC 4 DEC ANGLES	TOLERANCES UNLESS OTHERWISE SPECIFIED: .108-2012 APPLICATION SPEC 114-2046 FINISH	DWG: MICHAEL S. FEHLER CHK: RICHARD GIZYCHOWSKI APP'D: NELSON E. NEFF DATE: 10/27/99 TYPED: 10/27/99 NAME:	Tyco Electronics Corporation Harrisburg, PA 17105-3608 TERMINAL, POKE-IN, 300 SERIES MAG-MATE™ SEE CASE CODE (DRAWING NO) A2 00779 C-62429 SCALE: 10:1 SHEET 1 OF 1 REV AG
--	---	---	--

MATERIAL: SEE TABLE  
 FINISH: SEE TABLE  
 CUSTOMER DRAWING

AMP 1421-9 REV 31MAR2000

62429

A