

4

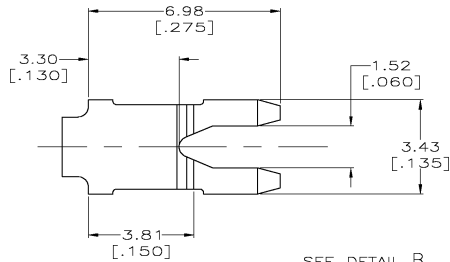
3

2

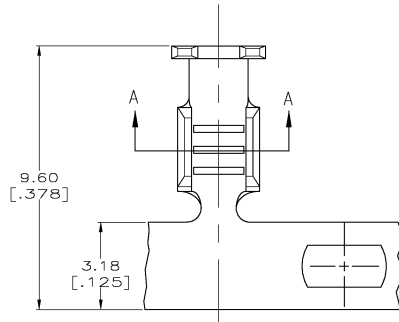
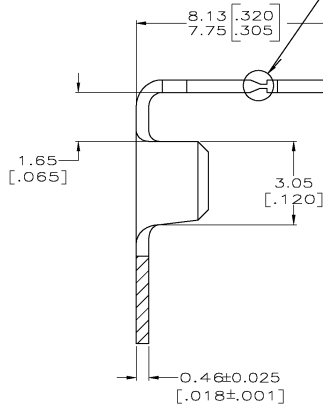
1

THIS DRAWING IS UNPUBLISHED. RELEASED FOR PUBLICATION
 BY TYCO ELECTRONICS CORPORATION. ALL RIGHTS RESERVED.

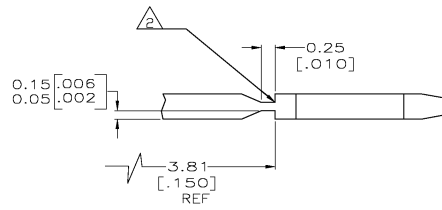
LOC	DIST	REVISIONS			
P	LTR	DESCRIPTION	DATE	MIN	APPD
AF	50				
J		REVISED PER DG3A-0750-02	18DEC02	MF	KR



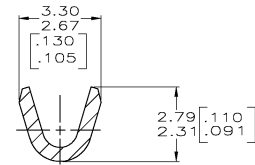
SEE DETAIL B



1 CONTINUOUS STRIP ON REELS WITH TERMINALS LOCATED ON 9.14 ± 0.08 [$.360 \pm 0.003$] CENTERS.
 FOR OPTIMUM RETENTION IN POKE-IN TYPE MAG-MATE TERMINALS, THE SERRATION AS SHOWN MUST BE ENGAGED WITH THE EDGE OF THE LEAF



DETAIL B SCALE 20:1



SECTION A-A

0.30-0.8mm [22-18] AWG	62895-1
WIRE RANGE	PART NUMBER

THIS DRAWING IS A CONTROLLED DOCUMENT.		DW: M.S. FEHER 18DEC2002		Tyco Electronics Corporation	
DIMENSIONS: INCHES		CHK: K.A. RANDOLPH 18DEC2002		Harrisburg, PA 17105-3608	
TOLERANCES UNLESS OTHERWISE SPECIFIED:		APPD: K.A. RANDOLPH 18DEC2002		NAME: Tyco Electronics	
Ø	P.L.C.	±	—	TAB, POKE-IN, MAG-MATE™	
1	P.L.C.	±	—	—	
2	P.L.C.	±	0.25(010)	—	
3	P.L.C.	±	—	—	
4	P.L.C.	±	—	—	
5	ANGLES	±	—	—	
MATERIAL: OB1 BRASS		FINISH: 0.000381 [.000015]		SHEET: A2	
		MIN PRE-TIN PLATE		CASE CODE: 00779	
				DRAWING NO: 62895	
				RESTRICTED TO: —	
				SCALE: 10:1	
				SHEET: 1 OF 1	
				REV: J	

CUSTOMER DRAWING

AMP 1421-9 REV 31 MAR 2000

62895

A