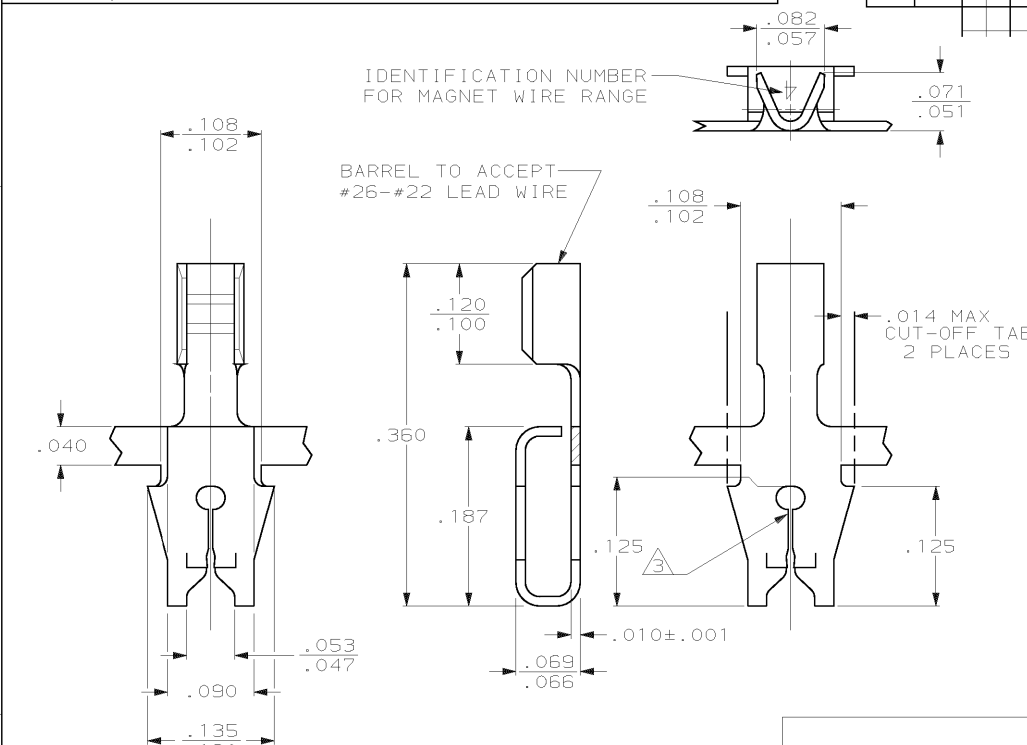


THIS DRAWING IS UNPUBLISHED. RELEASED FOR PUBLICATION .19  
 © COPYRIGHT 19 BY AMP INCORPORATED. ALL INTERNATIONAL RIGHTS RESERVED.

LOC		DIST		REVISIONS			DATE	APPD
AF	50	P	F	ZONE	LTR	DESCRIPTION	16MAY01	KR
					J	REV STATUS -2 PER 063A-0282-01		



- ① MAG-MATE CAVITY SPECIFICATION.
- ② CONTINUOUS STRIP ON REELS WITH TERMINALS LOCATED ON .200 CENTERS.
- ③ SLOT ACCEPTS #33-#31 AWG COPPER MAGNET WIRE.

MINI-APPLICATOR	63039-2
MAG-MATE INSERTER	63039-1
REELING	PART NO

.140	F	.055	.033	22	DO NOT SCALE PRINT. UNLESS SPECIFIED DIMENSIONS IN INCHES TOLERANCES ON: 2 PLC DEC ± 3 PLC DEC ± .010 ANGLES ±
			.029	24	
			.028	26	
MATERIAL					#4 HARD BRASS
FINISH					.000150 MIN TIN

AMP		AMP INCORPORATED Harrisburg, Pa. 17105	
NAME TERMINAL, F CRIMP, MAG-MATE™			
SIZE	FSCM NO	DRAWING NO	
B	00779	63039	
SCALE	10:1	SHEET 1 OF 1	