

4

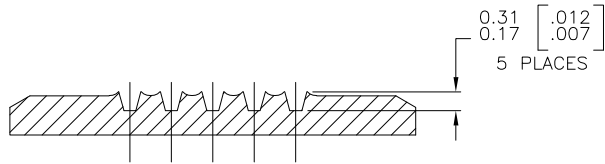
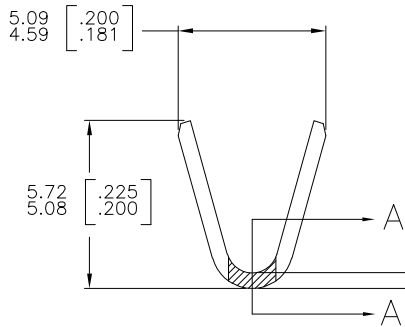
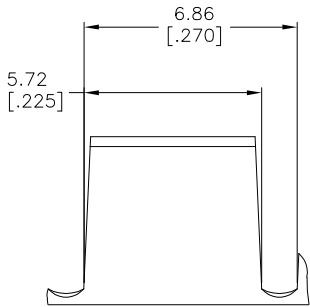
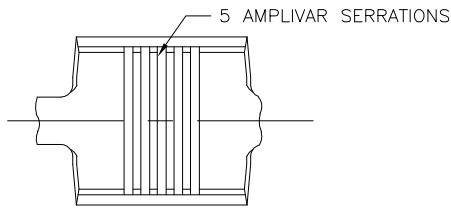
3

2

1

THIS DRAWING IS UNPUBLISHED. RELEASED FOR PUBLICATION  
 © COPYRIGHT - BY TYCO ELECTRONICS CORPORATION. ALL RIGHTS RESERVED.

LOC		DIST		REVISIONS			
P	LTR	DESCRIPTION	DATE	DWN	APVD		
	C1	ECR-06-023927 (REDRAWN IN AUTOCAD)	28JUN06	HMR	GP		



SECTION A-A  
SCALE 20:1

- 1 CONTINUOUS STRIP ON REELS.
- 2 DIMENSIONS IN BRACKETS ARE IN INCHES.
- 3 FOR ADDITIONAL INFORMATION, SEE APPLICATION SPEC. 114-2009.
- 4 WIRE RANGE: 3000-7000 CMA.
- 5 CRIMP WIDTH: .140 F TYPE (AMPLIVAR THRU)  
 CRIMP HEIGHT (±.002)=(TOTAL CMA+14,600)/243,900  
 GENERAL APPLICATION GUIDELINES MUST BE FOLLOWED AS SPECIFIED IN CATALOG #82221  
 FOR APPLICATOR INFORMATION CALL:1-800-722-1111  
 FOR PRODUCT INFORMATION CALL:1-800-522-6752

OBSOLETE	NICKEL FLASH	41768-1
		41766
	FINISH	PART NO

THIS DRAWING IS A CONTROLLED DOCUMENT.		DWN	28JUN06	<b>tyco</b> <b>Electronics</b>		Tyco Electronics Corporation Harrisburg, PA 17105-3608	
DIMENSIONS: mm [INCHES]		CHK	RAGHAVENDRA	NAME		SPLICE, AMPLIVAR	
TOLERANCES UNLESS OTHERWISE SPECIFIED:		APVD	G.D.PORTA	PRODUCT SPEC		RESTRICTED TO	
0 PLC ± -		APPLICATION SPEC		SIZE	CAGE CODE	DRAWING NO	
1 PLC ± -		MATERIAL		WEIGHT	A3	00779	©41766
2 PLC ± -		FINISH		CUSTOMER DRAWING			
3 PLC ± 0.38 [.015]		SEE TABLE		SCALE	8:1	SHEET	1 OF 1
4 PLC ± - ± 1°				REV	C1		