

4

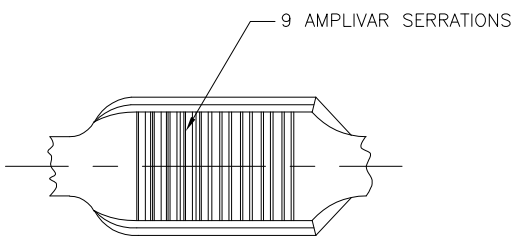
3

2

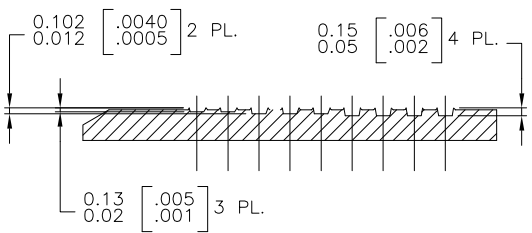
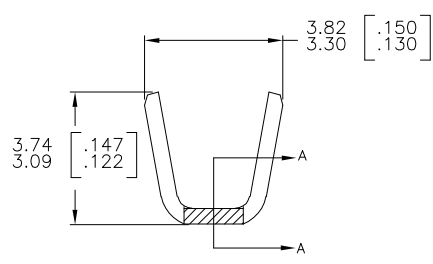
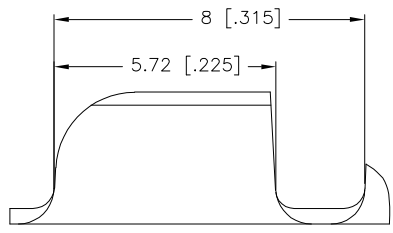
1

THIS DRAWING IS UNPUBLISHED. RELEASED FOR PUBLICATION
 © COPYRIGHT - BY TYCO ELECTRONICS CORPORATION. ALL RIGHTS RESERVED.

LOC	DIST	REVISIONS			
P	LTR	DESCRIPTION	DATE	DWN	APVD
AF	50	D1	ECR-06-003925 (REDRAWN IN AUTOCAD)	30JAN06	HMR/GDP



1. PRODUCT PROVIDED IN STRIP FORM ON REELS; BREAKS MAY BE PRESENT.
2. FOR FOREIGN USE ONLY
3. DIMENSIONS IN BRACKETS ARE IN INCHES.
4. CRIMP WIDTH: .110 F (AMPLIVAR TYPE)
 CRIMP HEIGHT (±.002)=(TOTAL CMA +7730)/188,900
 GENERAL APPLICATION GUIDELINES MUST BE FOLLOWED AS SPECIFIED IN CATALOG # 82221
 FOR APPLICATOR INFORMATION CALL: 1-800-722-1111
 FOR PRODUCT INFORMATION CALL: 1-800-522-6752



SECTION A-A
 SCALE : 20:1

METRIC

TIN PL.	62305-2
	62305-1
FINISH	PART NO.

THIS DRAWING IS A CONTROLLED DOCUMENT.

DIMENSIONS: mm [NCHES]	TOLERANCES UNLESS OTHERWISE SPECIFIED: 0 PLC ± - 1 PLC ± - 2 PLC ± 0.38[.015] 3 PLC ± - 4 PLC ± - ANGLES ± 1°	OWN RAGHAVENDRA 30JAN06	CHK G.D.PORTA	Tyco Electronics Corporation Harrisburg, PA 17105-3608
MATERIAL 0.41[.016] BRASS	FINISH SEE TABLE	APVD G.D.PORTA	NAME G.D.PORTA	
		PRODUCT SPEC	APPLICATION SPEC	SIZE A3
		WEIGHT	114-2003	CAGE CODE 00779
		CUSTOMER DRAWING	62305	DRAWING NO 62305
		SCALE	10:1	RESTRICTED TO
		SHEET	1 of 1	REV D1

AMP 1470-19 REV 31MAR2000