

4

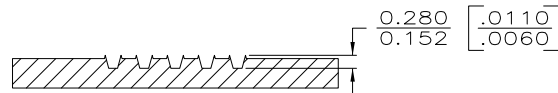
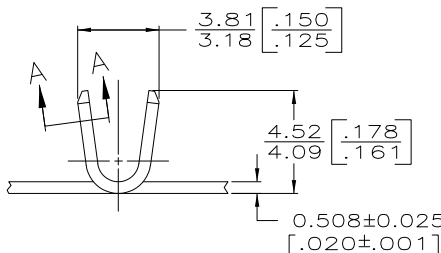
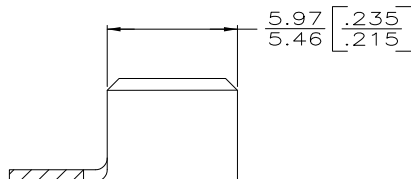
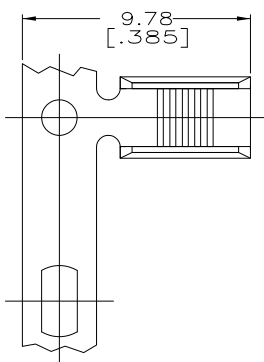
3

2

1

THIS DRAWING IS UNPUBLISHED. RELEASED FOR PUBLICATION
 © COPYRIGHT - BY TYCO ELECTRONICS CORPORATION. ALL INTERNATIONAL RIGHTS RESERVED.

LOC	DIST	REVISIONS			
P	LTR	DESCRIPTION	DATE	DWN	APVD
AF	50	C1	REVISED PER ECR-10-001322	23JAN10	HMR GP



SECTION A-A
 SCALE 15:1
 ROTATED

- 1 CONTINUOUS STRIP ON REELS.
- 2 CRIMP WIDTH = .110 F TYPE (AMPLIVAR THRU)
 CRIMP HEIGHT (±.002) = (TOTAL CMA + 11,500) / 194,200
 GENERAL APPLICATION GUIDELINES MUST BE FOLLOWED
 AS SPECIFIED IN CATALOG #82221
 FOR APPLICATOR INFORMATION CALL: 1-800-722-1111
 FOR PRODUCT INFORMATION CALL: 1-800-522-6752
- 3 TIN 112-16-3 0.00203 [.000080] MIN THK

2000-5400 CMA	63564-3
	63564-1
WIRE RANGE	PART NO

THIS DRAWING IS A CONTROLLED DOCUMENT.		DWN MICHAEL S. FEHER 12/20/89	Tyco Electronics Corporation Harrisburg, PA 17105-3608	
DIMENSIONS: mm [INCHES]		CHK P. FORTNEY 12/21/89	NAME T.L. SHUTTER 1/2/90	
TOLERANCES UNLESS OTHERWISE SPECIFIED:		APVD I.L. SHUTTER 1/2/90	PRODUCT SPEC -	
0 PLC ± -		APPLICATION SPEC 114-2009		
1 PLC ± -		WEIGHT -		
2 PLC ± -		SIZE A3		
3 PLC ± 0.25 [.010]		CAGE CODE 00779		
4 PLC ± -		DRAWING NO 63564		
ANGLES ± -		RESTRICTED TO -		
MATERIAL #2 HARD BRASS		FINISH -		
		CUSTOMER DRAWING		
		SCALE 6:1 SHEET 1 OF 1 REV C1		

