

4

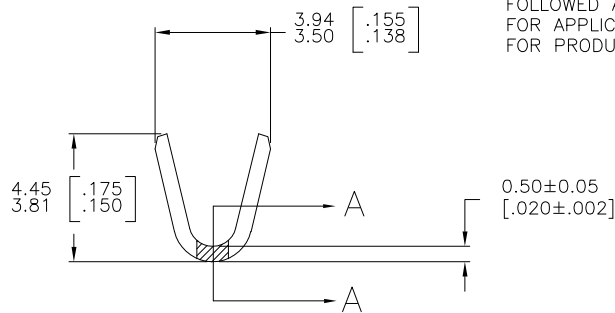
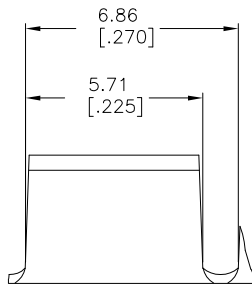
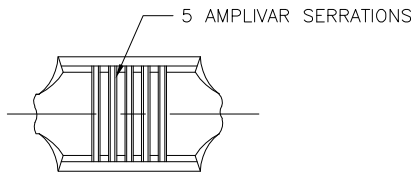
3

2

1

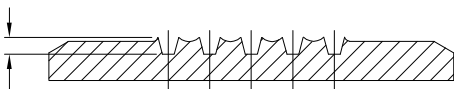
THIS DRAWING IS UNPUBLISHED. RELEASED FOR PUBLICATION
 © COPYRIGHT - BY TYCO ELECTRONICS CORPORATION. ALL RIGHTS RESERVED.

LOC		DIST		REVISIONS			
P	LTR	DESCRIPTION	DATE	DWN	APVD		
	S1	ECR-06-023927(REDRAWN IN AUTOCAD)	06OCT06	HMR	GP		



- 1 CONTINUOUS STRIP ON REELS.
- 2 DIMENSIONS IN BRACKETS ARE IN INCHES.
- 3 FOR ADDITIONAL INFORMATION, SEE APPLICATION SPEC. 114-2009.
- 4 Δ CRIMP WIDTH: .110 F TYPE (AMPLIVAR THRU)
 CRIMP HEIGHT $(\pm.002) = (\text{TOTAL CMA} + 10,700) / 193,400$
 GENERAL APPLICATION GUIDELINES MUST BE FOLLOWED AS SPECIFIED IN CATALOG #82221
 FOR APPLICATOR INFORMATION CALL: 1-800-722-1111
 FOR PRODUCT INFORMATION CALL: 1-800-522-6752

0.28 [.011]
 0.15 [.006]
 5 PLACES



SECTION A-A
 SCALE 20:1

OBSOLETE	1500-5000 CMA	Δ	NICKEL FLASH	41765-1
	1500-5000 CMA	Δ	-	41765
	WIRE RANGE		FINISH	PART NO

THIS DRAWING IS A CONTROLLED DOCUMENT.		DWN	06OCT06	Tyco Electronics Corporation Harrisburg, PA 17105-3608	
DIMENSIONS: mm [INCHES]		CHK	RAGHAVENDRA	NAME	
TOLERANCES UNLESS OTHERWISE SPECIFIED:		APVD	G.D.PORTA	SPLICE, AMPLIVAR	
0 PLC ± -		PRODUCT SPEC	G.D.PORTA	RESTRICTED TO	
1 PLC ± -		APPLICATION SPEC	-	SIZE	CAGE CODE
2 PLC ± -		WEIGHT	-	A3	00779
3 PLC ± 0.38 [.015]		CUSTOMER DRAWING	-	DRAWING NO	C-41765
4 PLC ± -		SCALE	8:1	SHEET	1 OF 1
4 PLC ANGLES ± 1' 0"		REV	S1		
MATERIAL	FINISH				
BRASS	SEE TABLE				