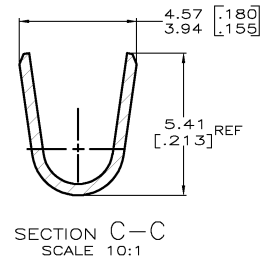
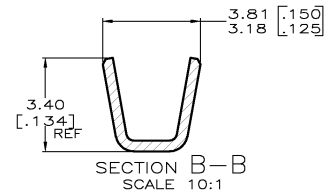
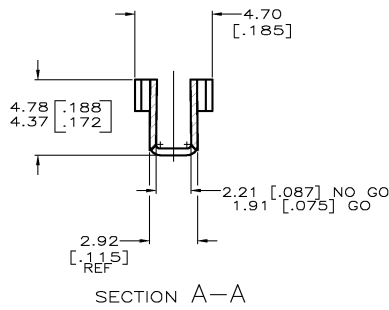
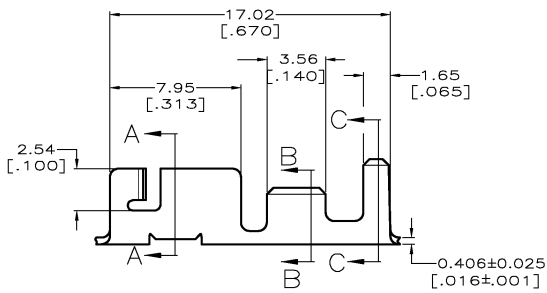
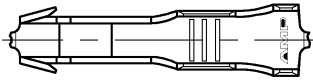


THIS DRAWING IS UNPUBLISHED. RELEASED FOR PUBLICATION
 © COPYRIGHT BY TYCO ELECTRONICS CORPORATION. ALL RIGHTS RESERVED.

LOC		DIST		REVISIONS			
REV	DATE	BY	APP'D	DESCRIPTION	DATE	BY	APP'D
AF	50						
		D		REV PER 0G3A-0638-02	25OCT02	MF	GP

- CONTINUOUS STRIP ON REELS WITH TERMINALS LOCATED ON 18.67±0.08 [.735±.003] CENTERS.
 - PRODUCT SPEC DOES NOT APPLY TO PART NUMBER 1217264-2.
- ⚠ PRELIMINARY - NOT FOR PRODUCTION.



F OR O	3.3 [.130]	4.37 [.172]	F	2.54 [.100]	1.30 [.051]	0.35 w [.22]
					1.35 [.055]	0.5 w [.20]
					1.45 [.057]	0.75 w [.18]
					1.63 [.064]	1.5 w [.16]
					1.85 [.073]	2.0 w [.14]

TYPE	WIDTH	STRIP LENGTH ±0.38 ±0.15	TYPE	WIDTH	HEIGHT	WIRE
INSUL BARREL CRIMP			WIRE BARREL CRIMP			

H02 CU-FE, C19500	2.03-3.81 [.080-.150] DIA	#22-#14 AWG	⚠ 1217264-2
H03 PHOSPHOR BRONZE	2.03-3.81 [.080-.150] DIA	#22-#14 AWG	1217264-1
MATERIAL	INSULATION RANGE	WIRE BARREL	PART NUMBER

DIMENSIONS:		FINISH:		MATERIAL:		REVISIONS:		DRAWING NO:		SCALE:	
MM (INCHES)	SEE TABLE	0.002032 [.000080]	MIN TIN PLATE	SEE TABLE	SEE TABLE	A2	00779	114-2019	6:1	1	1

1217264

A

REV D