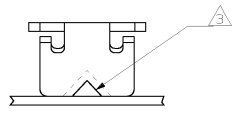


4 3 2 1

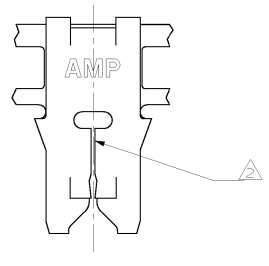
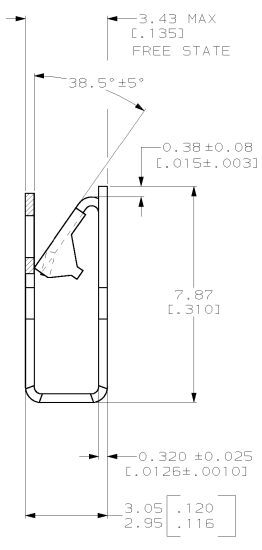
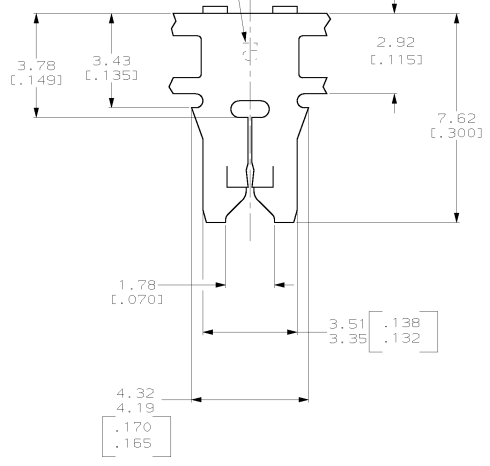
THIS DRAWING IS UNPUBLISHED. RELEASED FOR PUBLICATION
 (C) COPYRIGHT IS BY AMP INCORPORATED. ALL RIGHTS RESERVED.

REV	DATE	DESCRIPTION	DATE	BY	APP'D
A	97DEC99	REVISED PER 053A-0284-99		KLS	KR

- 1 CONTINUOUS STRIP ON REELS WITH TERMINALS LOCATED ON 5.59 ± 0.08 [$2.20 \pm .003$] CENTERS
- 2 SLOT TERMINATES EITHER A SINGLE OR DOUBLE MAGNET WIRE OF THE SAME SIZE AND TYPE. COPPER RANGE: $0.23-0.32$ mm [#31-#28]
- 3 POKE-IN ACCEPTS A $0.5-0.9$ mm² [#20#18] AWG SOLID OR FUSED STRANDED LEAD WIRE.



IDENTIFICATION NUMBER 5 FOR MAGNET WIRE RANGE



1217234-1
PART NUMBER

THIS DRAWING IS A CONTROLLED DOCUMENT.		DWG: MICHAEL S. FEJER DPT: 29401999 DATE: 09/01/99	AMP Incorporated Harrisburg, PA 17105-3608	TERMINAL, POKE-IN, 300 SERIES MAG-MATE™	RESTRICTED TO A2 00779 C- 1217234
DIMENSIONS: mm (INCHES) DECIMALS: 0.0005 (0.0002)	DRAWN BY: FURT RANDOLPH DATE: 09/01/99	PRODUCT SPEC: 108-2012 APPLICATION SPEC: 114-2046 WEIGHT: - FINISH: 0.002032 [.000080] MIN TIN PLATE			