

4

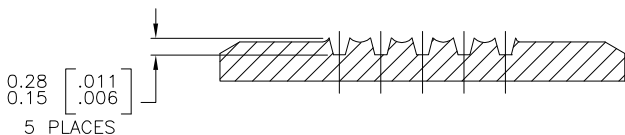
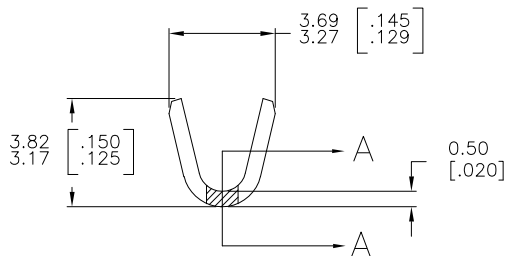
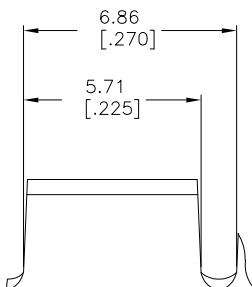
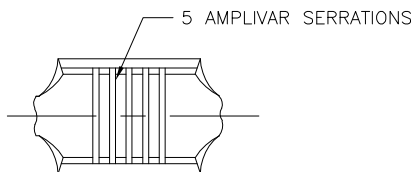
3

2

1

THIS DRAWING IS UNPUBLISHED. RELEASED FOR PUBLICATION
 © COPYRIGHT - BY TYCO ELECTRONICS CORPORATION. ALL RIGHTS RESERVED.

LOC	DIST	REVISIONS				
P	LTR	DESCRIPTION	DATE	DWN	APVD	
AF	50	D1	ECR-06-023927 (REDRAWN IN AUTOCAD)	07JUL06	HMR	GP



SECTION A-A
SCALE 20:1

- CONTINUOUS STRIP ON REELS.
- DIMENSIONS IN BRACKETS ARE IN INCHES.
- FOR ADDITIONAL INFORMATION, SEE APPLICATION SPEC. 114-2009.
- WIRE RANGE: 600-3000 CMA.
- CRIMP WIDTH: .110 F TYPE (AMPLIVAR THRU)
 CRIMP HEIGHT ($\pm .002$) = (TOTAL CMA + 9,400) / 190,500
 GENERAL APPLICATION GUIDELINES MUST BE FOLLOWED AS SPECIFIED IN CATALOG #82221
 FOR APPLICATOR INFORMATION CALL: 1-800-722-1111
 FOR PRODUCT INFORMATION CALL: 1-800-522-6752

OBSOLETE	TIN PLATE	0.51 [.020]	PH BRZ	42076-3
OBSOLETE	-	0.51 [.020]	PH BRZ	42076-2
OBSOLETE	TIN PLATE	0.51 [.020]	BRASS	42076-1
-	-	0.51 [.020]	BRASS	42076-0
FINISH		MATERIAL		PART NO

THIS DRAWING IS A CONTROLLED DOCUMENT.		DWN	07JUL06	Tyco Electronics Corporation Harrisburg, PA 17105-3608	
DIMENSIONS: mm [INCHES]		CHK	RAGHAVENDRA	G.D.PORTE	
TOLERANCES UNLESS OTHERWISE SPECIFIED:		APVD	G.D.PORTE	NAME	
0 PLC ± -		PRODUCT SPEC		SPLICE, AMPLIVAR	
1 PLC ± -		APPLICATION SPEC		RESTRICTED TO	
2 PLC ± -		SIZE	CAGE CODE	DRAWING NO	RESTRICTED TO
3 PLC ± 0.38 [.015]		WEIGHT	A3	00779	C-42076
4 PLC ± -		CUSTOMER DRAWING		SCALE	8:1
ANGLES ± 1° 0'		SHEET		1	OF 1
MATERIAL	FINISH	REV		D1	
SEE TABLE	SEE TABLE				