

4

3

2

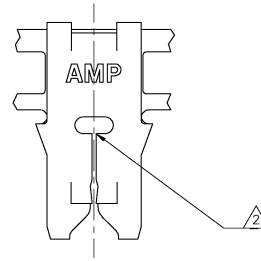
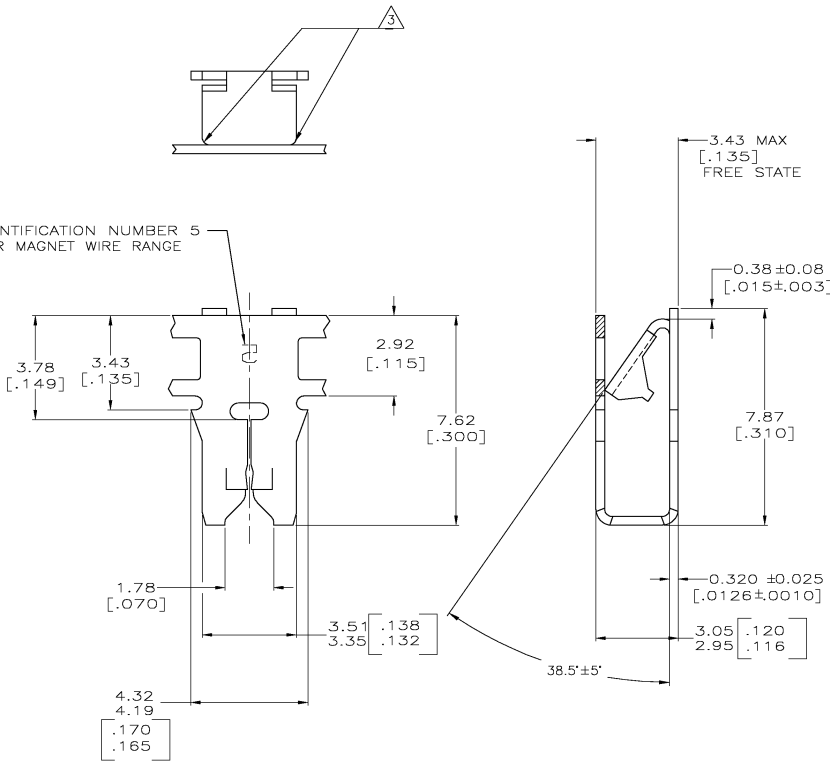
1

THIS DRAWING IS UNPUBLISHED. RELEASED FOR PUBLICATION  
 © COPYRIGHT BY TYCO ELECTRONICS CORPORATION. ALL RIGHTS RESERVED.

LOC	DIST	REVISIONS			
P	LTR	DESCRIPTION	DATE	OWN	APPD
AF	50	B	REVISED PER 063A-0370-03	24JUN03	MF KR

- 1 CONTINUOUS STRIP ON REELS WITH TERMINALS LOCATED ON  $5.59 \pm 0.08$  [.220 ± .003] CENTERS.
- 2 SLOT TERMINATES EITHER A SINGLE OR DOUBLE MAGNET WIRE OF THE SAME SIZE AND TYPE. COPPER RANGE: 0.23-0.32mm [#31-#28] AWG.
- 3 POKE-IN AREA AT CORNERS ACCEPTS A 0.3-0.9mm SQ [#22-#18] AWG SOLID OR FUSED STRANDED LEAD WIRE.

IDENTIFICATION NUMBER 5 FOR MAGNET WIRE RANGE



1217234-1  
PART NUMBER

THIS DRAWING IS A CONTROLLED DOCUMENT.		DW: MICHAEL S. FEHLER CHK: KURT A. RANDOLPH APPD: KURT A. RANDOLPH		Tyco Electronics Corporation Harrisburg, PA 17105-3608	
DIMENSIONS: MM (INCH) 0 P.L.C. ± - 1 P.L.C. ± - 2 P.L.C. ± - 3 P.L.C. ± - 4 P.L.C. ± - ANGLES ± -		TOLERANCE UNLESS OTHERWISE SPECIFIED: 0.002032 [0.000080] MIN. TIN PLATE		PRODUCT SPEC: 108-2012 APPLICATION SPEC: 114-2046 WEIGHT: - CUSTOMER DRAWING	
MATERIAL: 4M BRASS		FINISH: 0.002032 [0.000080] MIN. TIN PLATE		SEE CASE CODE DRAWING NO: A2 00779 © 1217942 RESTRICTED TO: - SCALE: 10:1 SHEET 1 OF 1 REV B	