

4

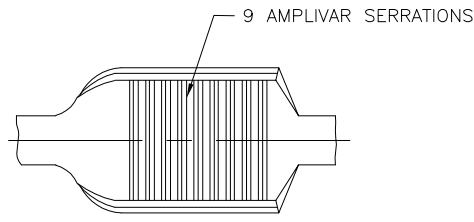
3

2

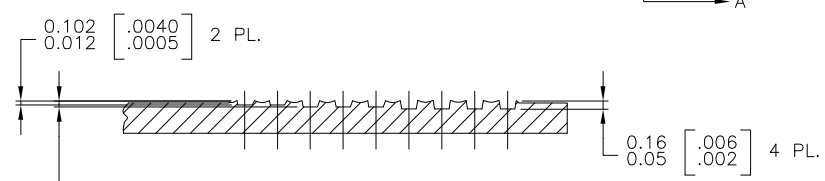
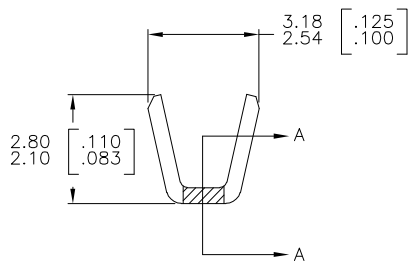
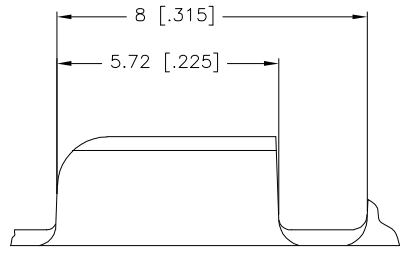
1

THIS DRAWING IS UNPUBLISHED. RELEASED FOR PUBLICATION
 © COPYRIGHT - BY TYCO ELECTRONICS CORPORATION. ALL RIGHTS RESERVED.

LOC		DIST		REVISIONS			
P	LTR	DESCRIPTION	DATE	OWN	APVD		
E1		ECR-06-003925 (REDRAWN IN AUTOCAD)	31JAN06	HMR	GDP		



1. PRODUCT PROVIDED IN STRIP FORM ON REELS; BREAKS MAY BE PRESENT.
2. DIMENSIONS IN BRACKETS ARE IN INCHES.
3. CRIMP WIDTH: .080 F (AMPLIVAR TYPE)
 CRIMP HEIGHT $(\pm .002) = (\text{TOTAL CMA} + 5320) / 139,200$
 GENERAL APPLICATION GUIDELINES MUST BE FOLLOWED AS SPECIFIED IN CATALOG #82221
 FOR APPLICATOR INFORMATION CALL: 1-800-722-1111
 FOR PRODUCT INFORMATION CALL: 1-800-522-6752



SECTION A-A
 SCALE 20:1

METRIC

THIS DRAWING IS A CONTROLLED DOCUMENT.

DIMENSIONS: mm [NCHES]	TOLERANCES UNLESS OTHERWISE SPECIFIED:
	0 PLC ± -
	1 PLC ± -
	2 PLC ± -
	3 PLC ± 0.38 [.015]
	4 PLC ± -
	ANGLES ± 1°
MATERIAL 0.41 [.016] BRASS	FINISH TIN PL.

OWN RAGHAVENDRA	31JAN06	tyco Electronics		Tyco Electronics Corporation Harrisburg, PA 17105-3608	
CHK G.D.PORTA		NAME G.D.PORTA		RESTRICTED TO	
APVD G.D.PORTA		PRODUCT SPEC		SPLICE, AMPLIVAR 400 TO 1500 CMA	
APPLICATION SPEC 114-2003		SIZE A3	CAGE CODE 00779	DRAWING NO C=62303	
WEIGHT		CUSTOMER DRAWING		SCALE 10:1	SHEET 1 of 1
REV E1		PART NO 62303-2			