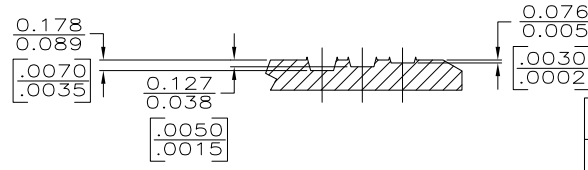


SECTION A-A
SCALE 20:1



SECTION B-B
SCALE 20:1

- 1 CONTINUOUS STRIP ON REEL.
- 2 SERRATION DEPTH SHOULD BE MEASURED IN AN AREA FREE FROM FORMING.
- 3 0.00254 [.000100] MIN TIN PLATE.
- 4 0.0038 [.000015] MIN GOLD PLATE OVER 0.00127 [.000050] MIN NICKEL UNDERPLATE. GOLD PLATE IS ON WIRE BARREL ONLY.
- 5 REELING: PLASTIC REELS.
- 6 PRELIMINARY - NOT FOR PRODUCTION

FINISH	REELING	WIRE RANGE	PART NO
REVERSE	REVERSE	400-1300 CMA	62194-6
STANDARD	STANDARD		62194-5
STANDARD	STANDARD		62194-4
REVERSE	REVERSE		62194-3
STANDARD	STANDARD		62194-2
STANDARD	STANDARD		62194-1

THIS DRAWING IS A CONTROLLED DOCUMENT.

DIMENSIONS: mm [INCHES]	TOLERANCES UNLESS OTHERWISE SPECIFIED: 0 PLC ± - 1 PLC ± - 2 PLC ± - 3 PLC ± 0.25 [.010] 4 PLC ± - ANGLES ± -	DWN PHIL FORTNEY 7/27/93 CHK MS FEHER 7/27/93 APVD D SCHWENK 7/27/93	Tyco Electronics Tyco Electronics Corporation Harrisburg, PA 17105-3608
MATERIAL O82 BRASS	FINISH SEE TABLE	NAME SPLICE, AMPLIVAR™ MINIATURE	SIZE CAGE CODE DRAWING NO A3 00779 C=62194
CUSTOMER DRAWING		RESTRICTED TO	SCALE 10:1 SHEET 1 of 1 REV P2