

4

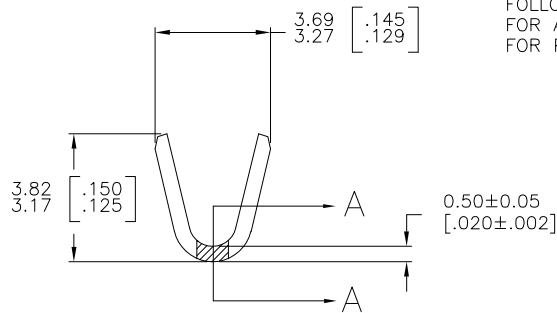
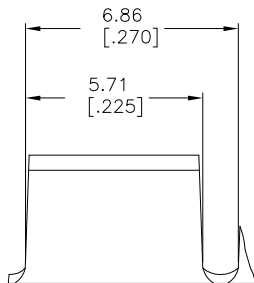
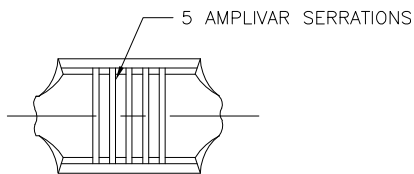
3

2

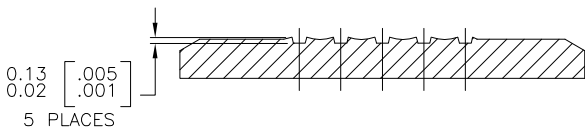
1

THIS DRAWING IS UNPUBLISHED. RELEASED FOR PUBLICATION
 © COPYRIGHT - BY TYCO ELECTRONICS CORPORATION. ALL RIGHTS RESERVED.

LOC		DIST		REVISIONS				
P	LTR	DESCRIPTION			DATE	DWN	APVD	
	G	ECR-06-023927 (REDRAWN IN AUTOCAD)			03JUL06	HMR	GP	



- 1 CONTINUOUS STRIP ON REELS.
- 2 DIMENSIONS IN BRACKETS ARE IN INCHES.
- 3 FOR ADDITIONAL INFORMATION, SEE APPLICATION SPEC. 114-2009.
- 4 CRIMP WIDTH: .110 F TYPE (AMPLIVAR THRU)
 CRIMP HEIGHT (± 0.002) = (TOTAL CMA + 9,400) / 190,500
 GENERAL APPLICATION GUIDELINES MUST BE FOLLOWED AS SPECIFIED IN CATALOG #82221
 FOR APPLICATOR INFORMATION CALL: 1-800-722-1111
 FOR PRODUCT INFORMATION CALL: 1-800-522-6752



SECTION A-A
 SCALE 20:1

OBSOLETE	NICKEL FLASH	BRASS	42192-5
OBSOLETE	TIN PLATE	PH BRZ	42192-4
OBSOLETE	-	-	42192-3
	TIN PLATE	BRASS	42192-2
	-	BRASS	42192-1
	FINISH	MATERIAL	PART NO

THIS DRAWING IS A CONTROLLED DOCUMENT. DWN 03JUL06
 CHK RAGHAVENDRA
 APVD G.D.PORTA
 PRODUCT SPEC G.D.PORTA
 APPLICATION SPEC
 WEIGHT
 CUSTOMER DRAWING

tyco
Electronics

Tyco Electronics Corporation
 Harrisburg, PA 17105-3608

NAME
 SPLICE, AMPLIVAR
 600 - 3000 CMA

SIZE A3 CAGE CODE 00779 DRAWING NO C-42192 RESTRICTED TO

SCALE 8:1 SHEET 1 OF 1 REV G