

4

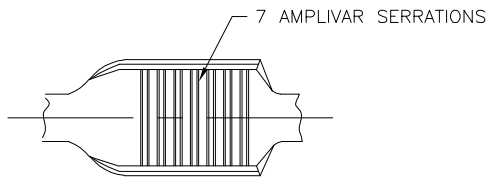
3

2

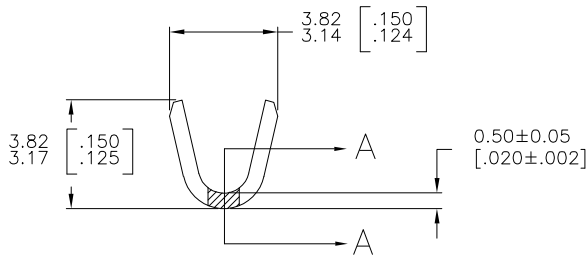
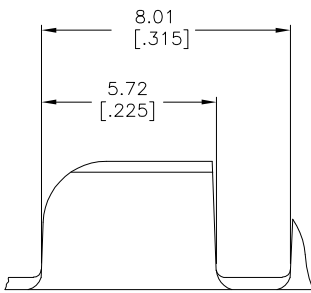
1

THIS DRAWING IS UNPUBLISHED. RELEASED FOR PUBLICATION  
 © COPYRIGHT - BY TYCO ELECTRONICS CORPORATION. ALL RIGHTS RESERVED.

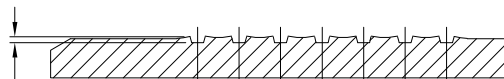
LOC		DIST		REVISIONS				
P	LTR	DESCRIPTION			DATE	DWN	APVD	
	E1	ECR-06-023927 (REDRAWN IN AUTOCAD)			17OCT06	HMR	GP	



- CONTINUOUS STRIP ON REELS
- DIMENSIONS IN BRACKETS ARE IN INCHES
- FOR ADDITIONAL INFORMATION, SEE APPLICATION SPEC. 114-2002
- WIRE RANGE: 600-3000 CMA.
- CRIMP WIDTH: .110 F TYPE (AMPLIVAR PIGTAIL)  
 CRIMP HEIGHT ( $\pm .002$ ) = (TOTAL CMA + 9,400) / 190,500  
 GENERAL APPLICATION GUIDELINES MUST BE FOLLOWED AS SPECIFIED IN CATALOG #82221  
 FOR APPLICATOR INFORMATION CALL: 1-800-722-1111  
 FOR PRODUCT INFORMATION CALL: 1-800-522-6752



0.13 [.005]  
 0.02 [.001]  
 7 PLACES



SECTION A-A  
 SCALE 20:1

TIN PLATE	62157-2
-	62157-1
FINISH	PART NO

THIS DRAWING IS A CONTROLLED DOCUMENT.		DWN	17OCT2006	Tyco Electronics Corporation Harrisburg, PA 17105-3608	
DIMENSIONS: mm [INCHES]		CHK	RAGHAVENDRA	C.D.PORTA	
TOLERANCES UNLESS OTHERWISE SPECIFIED:		APVD	G.D.PORTA	NAME	
0 PLC ± -		PRODUCT SPEC		SPLICE, AMPLIVAR	
1 PLC ± -		APPLICATION SPEC		RESTRICTED TO	
2 PLC ± -		SIZE	A3	CAGE CODE	00779
3 PLC ± 0.38 [.015]		DRAWING NO	C=62157		SCALE
4 PLC ± -		WEIGHT	CUSTOMER DRAWING		8:1
ANGLES ± 1' 0"		FINISH		SHEET	1 OF 1
MATERIAL	BRASS	SEE TABLE		REV	E1