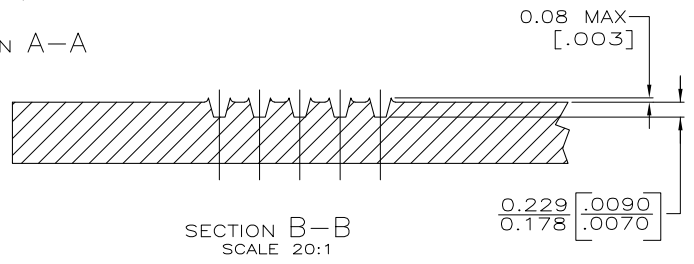
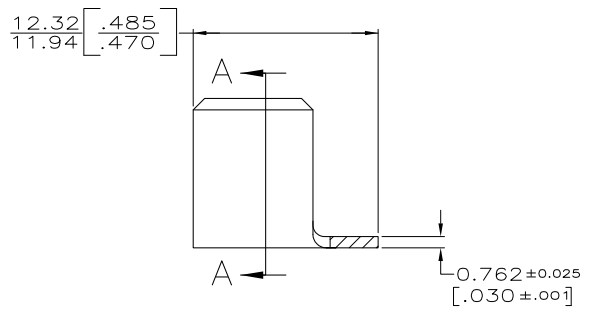
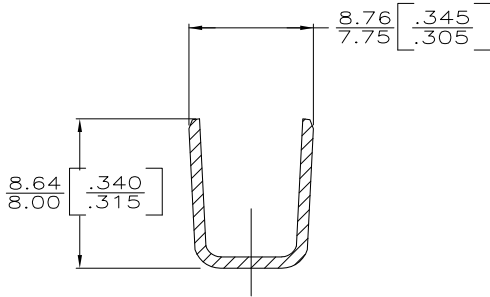
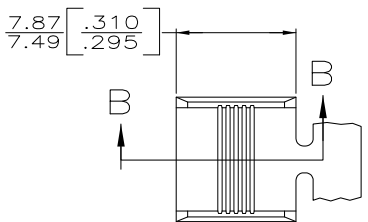


THIS DRAWING IS UNPUBLISHED. RELEASED FOR PUBLICATION
 © COPYRIGHT BY TYCO ELECTRONICS CORPORATION. ALL RIGHTS RESERVED.

LOC	DIST	REVISIONS					
AF	50	P	LTR	DESCRIPTION	DATE	DWN	APVD
		F1		REVISED PER ECR-07-029650	11DEC07	HMR	GP



1 PRODUCT PROVIDED IN STRIP FORM ON REELS;
 BREAKS MAY BE PRESENT.

2 CRIMP WIDTH: .300, F TYPE (AMPLIVAR THRU)
 CRIMP HEIGHT ±.002 = (TOTAL CMA + 44,500) / 510,200
 GENERAL APPLICATION GUIDELINES MUST BE FOLLOWED
 AS SPECIFIED IN CATALOG #82221
 FOR APPLICATOR INFORMATION CALL: 1-800-722-1111
 FOR PRODUCT INFORMATION CALL: 1-800-522-6752

10,400 TO 22,900 CMA	63562-1
2 WIRE RANGE	PART NO

THIS DRAWING IS A CONTROLLED DOCUMENT.		DWN	D.K. SCHRUM	11/30/89	Tyco Electronics Corporation Harrisburg, PA 17105-3608	
DIMENSIONS:		CHK	M.S. FEHER	12/6/89		
mm [INCHES]		APVD	D. SCHWENK	12/8/89		
TOLERANCES UNLESS OTHERWISE SPECIFIED:		PRODUCT SPEC				
0 PLC	± -	APPLICATION SPEC			NAME	SPLICE, AMPLIVAR 5 SERRATION
1 PLC	± -	WEIGHT			SIZE	A3
2 PLC	± -	CUSTOMER DRAWING			CAGE CODE	C=63562
3 PLC	± 0.25[.010]	SCALE	4:1		DRAWING NO	1 of 1
4 PLC	± -	SHEET	1 of 1		RESTRICTED TO	REV
ANGLES	± -	REV	F1			
MATERIAL	#1 HARD BRASS					
FINISH	0.002032[.000080] MIN TIN PL THK					