

4

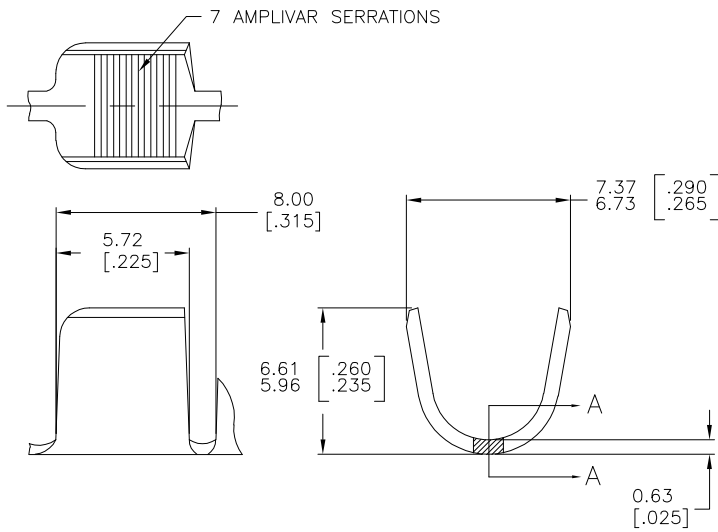
3

2

1

THIS DRAWING IS UNPUBLISHED. RELEASED FOR PUBLICATION  
 © COPYRIGHT - BY TYCO ELECTRONICS CORPORATION. ALL RIGHTS RESERVED.

LOC	DIST	REVISIONS				
P	LTR	DESCRIPTION	DATE	DWN	APVD	
	D1	ECR-06-023927 (REDRAWN IN AUTOCAD)	10NOV06	HMR	GP	



- CONTINUOUS STRIP ON REELS.
- DIMENSIONS IN BRACKETS ARE IN INCHES.
- FOR ADDITIONAL INFORMATION, SEE APPLICATION SPEC. 114-2002.
- WIRE RANGE: 7000-12000 CMA.
- CRIMP WIDTH: .250 F TYPE (AMPLIVAR PIGTAIL)  
 CRIMP HEIGHT ( $\pm .002$ ) = (TOTAL CMA + 27,100) / 423,700  
 GENERAL APPLICATION GUIDELINES MUST BE FOLLOWED AS SPECIFIED IN CATALOG #82221  
 FOR APPLICATOR INFORMATION CALL: 1-800-722-1111  
 FOR PRODUCT INFORMATION CALL: 1-800-522-6752

0.34 [.013]  
 0.20 [.008]  
 7 PLACES

SECTION A-A  
 SCALE 20:1

NONE	62295-2
TIN PLATE	62295-1
FINISH	PART NO

THIS DRAWING IS A CONTROLLED DOCUMENT.		DWN	10NOV06	Tyco Electronics Corporation Harrisburg, PA 17105-3608	
DIMENSIONS: mm [INCHES]		CHK	RAGHAVENDRA	G.D.PORTA	
TOLERANCES UNLESS OTHERWISE SPECIFIED:		APVD	G.D.PORTA	NAME	
0 PLC ± -		PRODUCT SPEC	-	SPLICE, AMPLIVAR 7 SERRATIONS	
1 PLC ± -		APPLICATION SPEC	-	SIZE	CAGE CODE
2 PLC ± -		WEIGHT	-	A3	00779
3 PLC ± 0.38 [.015]		CUSTOMER DRAWING	-	D	62295
4 PLC ± -		SCALE	6:1	SHEET	1 OF 1
ANGLES ± 1' 0"		REV	D1		
MATERIAL	FINISH				
BRASS	SEE TABLE				