

4

3

2

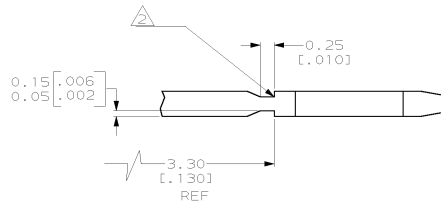
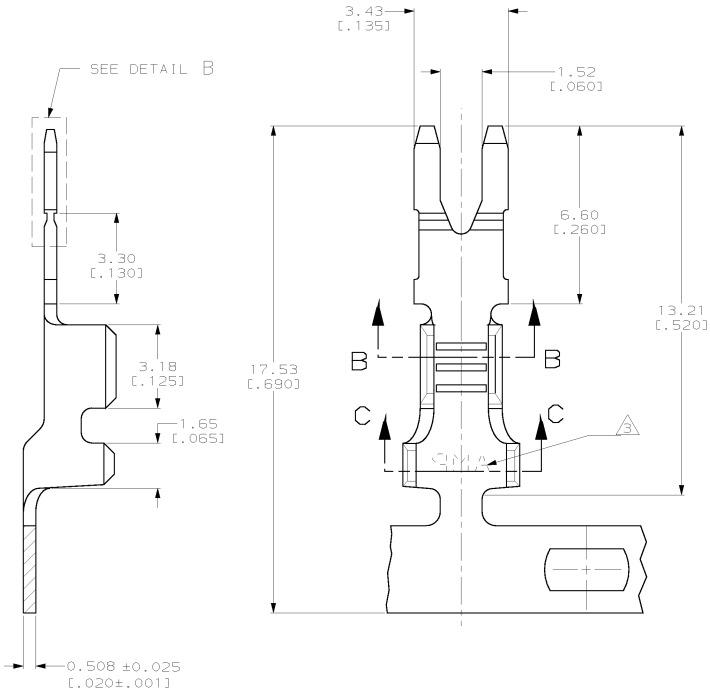
1

THIS DRAWING IS UNPUBLISHED.
 RELEASED FOR PUBLICATION
 BY AMP INCORPORATED. ALL RIGHTS RESERVED.

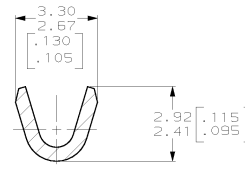
LOC	DIST	REVISIONS					
AF	50	F	LTR	DESCRIPTION	DATE	ENR	APPD
		T		REV PER 0L10-0048-98	26FEB98	RG	GP

1 CONTINUOUS STRIP ON REELS

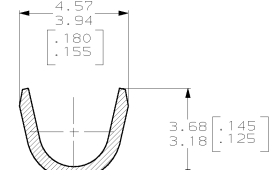
△ FOR OPTIMUM RETENTION IN POKE-IN TYPE MAG-MATE TERMINALS, THE SERRATION AS SHOWN MUST BE ENGAGED WITH THE EDGE OF THE LEAF



DETAIL B
 SCALE 20:1
 ROTATED 90° C.W.



SECTION A-A



SECTION C-C

1.52-2.54 DIA [.060-.100]	0.3-0.8mm ² [#22-#18]	62898-1 PART NUMBER
------------------------------	-------------------------------------	------------------------

THIS DRAWING IS A CONTROLLED DOCUMENT.		DWN R. GRZYBOWSKI 26NOV96 CHK M. S. FEHNER 26NOV96 DESIGNED J.S. PORTA PRODUCT SPEC - APPLICATION SPEC 114-2050 REWORK - CUSTOMER DRAWING	AMP Incorporated Harrisburg, PA 17105-3608 AMP TAB, POKE-IN, MAG-MATE™ SIZE: 114-2050 CASE CODE: A2100779 DRAWING NO: C-62898 SCALE: 10:1 SHEET 1 OF 1 REV 1
--	--	---	--

62898

B

A