

4

3

2

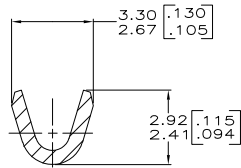
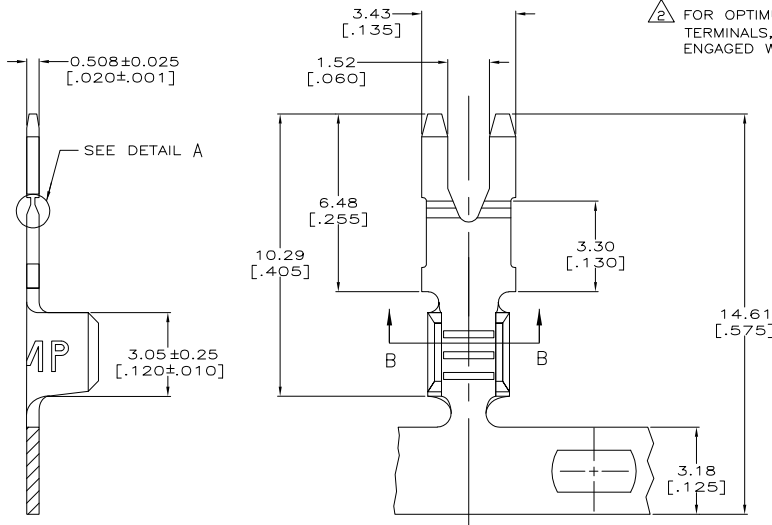
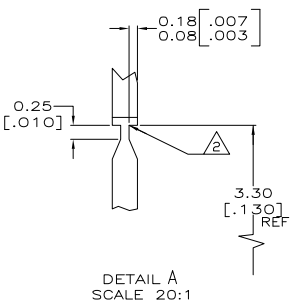
1

THIS DRAWING IS UNPUBLISHED. RELEASED FOR PUBLICATION  
 © COPYRIGHT BY TYCO ELECTRONICS CORPORATION. ALL RIGHTS RESERVED.

LOC	DIST	REVISIONS			
P	LTR	DESCRIPTION	DATE	BY	APPD
AF	50				
		K	REVISED PER ECR-05-014583	28NOV05	MF KR

1 CONTINUOUS STRIP ON REELS

△ FOR OPTIMUM RETENTION IN POKE-IN TYPE MAG-MATE TERMINALS, THE SERRATION AS SHOWN MUST BE ENGAGED WITH THE EDGE OF THE LEAF



0.3-0.8mm [#22-#18] AWG	62897-1
WIRE RANGE	PART NUMBER

THIS DRAWING IS A CONTROLLED DOCUMENT.		DRN R. GRZYBOWSKI	SAUCR Tyco Electronics Corporation
DIMENSIONS: mm		CHK M. S. FELDER	SAUCR Tyco Electronics Corporation
TO RANGE'S USE ONLY		APD G. DORTA	SAUCR Harrisburg, PA 17105-3608
0 PLC ±		PRODUCT SPEC	NAME TAB, POKE-IN, MAG-MATE™
1 PLC ±		APPLICATION SPEC	SIZE   CAGE CODE   DRAWING NO
2 PLC ±		114-2050	A2 00779 C-62897
3 PLC ± 0.25(010)		WEIGHT	RESTRICTED TO
4 PLC ±		CUSTOMER DRAWING	SCALE 10:1 SHEET 1 of 1 REV K
MATERIAL 082 BRASS		FINISH 0.002032 [0.00080] MIN TIN PLATE	

AMP 1471-9 REV 31MAR2000

62897

A