

4

3

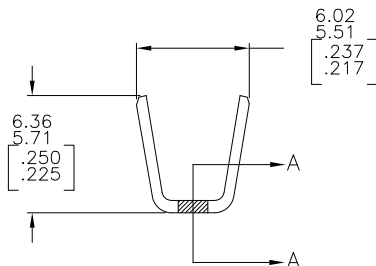
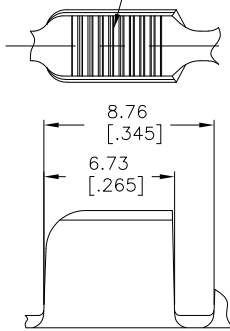
2

1

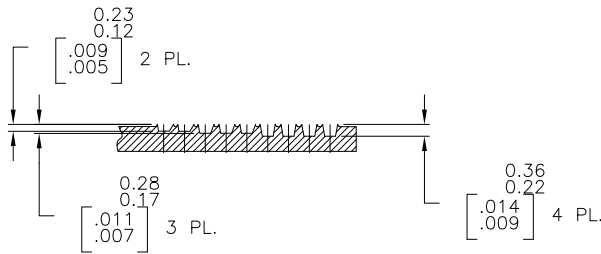
THIS DRAWING IS UNPUBLISHED. RELEASED FOR PUBLICATION
 © COPYRIGHT BY TYCO ELECTRONICS CORPORATION. ALL RIGHTS RESERVED.

| LOC | | DIST | | REVISIONS | | | |
|-----|-----|---------------------------|--|-----------|-----|------|--|
| P | LTR | DESCRIPTION | | DATE | DWN | APVD | |
| | F3 | REVISED PER ECR-10-007904 | | 16APR10 | HMR | GP | |

9 AMPLIVAR SERRATIONS



- 1 PRODUCT PROVIDED IN STRIP FORM ON REELS; BREAKS MAY BE PRESENT.
- 2 DIMENSIONS IN BRACKETS ARE IN INCHES.
- 3 CRIMP WIDTH: .180 F (AMPLIVAR TYPE)
 CRIMP HEIGHT (±.002)=(TOTAL CMA+23,000)/312,500
 GENERAL APPLICATION GUIDELINES MUST BE FOLLOWED AS SPECIFIED IN CATALOG #82221
 FOR APPLICATOR INFORMATION CALL : 1-800-722-1111
 FOR PRODUCT INFORMATION CALL : 1-800-522-6752



SECTION A-A
SCALE : 10:1

| | | |
|----------|----------|---------|
| OBSOLETE | -REVERSE | 62310-3 |
| | STANDARD | 62310-2 |
| | REELING | PART NO |

THIS DRAWING IS A CONTROLLED DOCUMENT.

| | | | | |
|--|---|-------------------------------|---|--------------------|
| DIMENSIONS: mm [INCHES] | TOLERANCES UNLESS OTHERWISE SPECIFIED: 0 PLC ± - 1 PLC ± - 2 PLC ± 0.38[.015] 3 PLC ± - 4 PLC ± - ANGLES ± 1° | DWN RAGHAVENDRA 31JAN06 | Tyco Electronics Corporation Harrisburg, PA 17105-3608 | |
| | | CHK G.D.PORTA | NAME G.D.PORTA | |
| | | APVD G.D.PORTA | PRODUCT SPEC SPLICE, AMPLIVAR 7000-13000 CMA | |
| | | APPLICATION SPEC 114-2003 | SIZE A3 | CAGE CODE 00779 |
| MATERIAL REF 0.64±0.03 [.025±.001] BRASS | FINISH TIN PL. | WEIGHT - | DRAWING NO C-62310 | RESTRICTED TO - |
| | | CUSTOMER DRAWING | SCALE 5:1 | SHEET 1 of 1 |

METRIC