

4

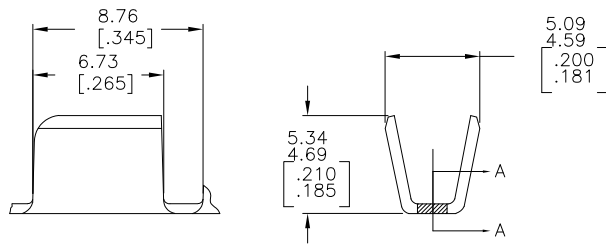
3

2

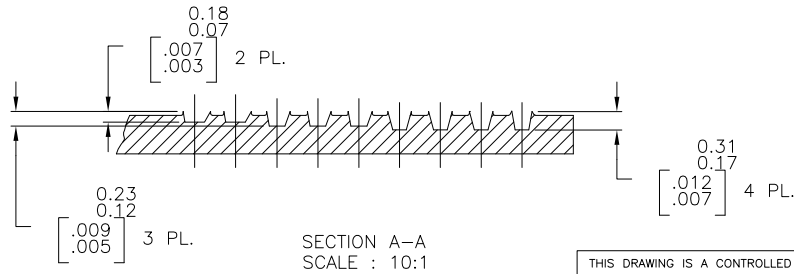
1

THIS DRAWING IS UNPUBLISHED. RELEASED FOR PUBLICATION
 © COPYRIGHT - By - ALL RIGHTS RESERVED.

LOC		DIST		REVISIONS			
P	LTR	DESCRIPTION		DATE	DWN	APVD	
AF	50	E3		REVISED PER ECO-11-005027	11MAR11	RK	HMR



1. PRODUCT PROVIDED IN STRIP FORM ON REELS; BREAKS MAY BE PRESENT.
2. DIMENSIONS IN BRACKETS ARE IN INCHES.
3. CRIMP WIDTH: .140 F (AMPLIVAR TYPE)
 CRIMP HEIGHT ($\pm .002$) = (TOTAL CMA + 14,600) / 243,900
 GENERAL APPLICATION GUIDELINES MUST BE FOLLOWED AS SPECIFIED IN CATALOG #82221
 FOR APPLICATOR INFORMATION CALL: 1-800-722-1111
 FOR PRODUCT INFORMATION CALL: 1-800-522-6752



62308-2
PART NO

METRIC

THIS DRAWING IS A CONTROLLED DOCUMENT.		DWN	30JAN06		TE Connectivity	
DIMENSIONS: mm [INCHES]		CHK	RAGHAVENDRA		NAME	
TOLERANCES UNLESS OTHERWISE SPECIFIED:		APVD	G.D.PORTA		SPLICE, AMPLIVAR	
0 PLC ± -		PRODUCT SPEC	G.D.PORTA		3000-7000 CMA	
1 PLC ± -		APPLICATION SPEC	114-2003		SIZE	CAGE CODE
2 PLC ± 0.38[.015]		WEIGHT	-		A3	00779
3 PLC ± -		CUSTOMER DRAWING	-		DRAWING NO	62308
4 PLC ± -		SCALE	5:1		SHEET	1 of 1
ANGLES ± 1°		RESTRICTED TO	-		REV	E3
FINISH		MATERIAL REF 0.51±0.03 [.020±.001] BRASS				
TIN PL.						