

4

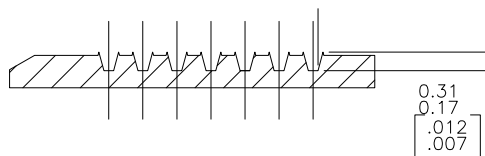
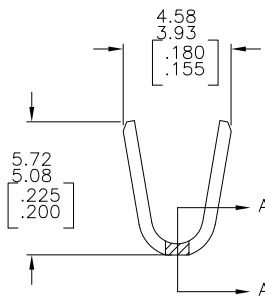
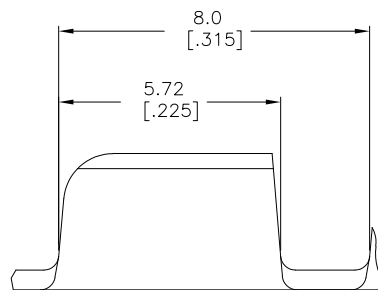
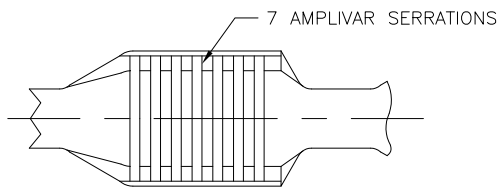
3

2

1

THIS DRAWING IS UNPUBLISHED. RELEASED FOR PUBLICATION
 © COPYRIGHT - BY TYCO ELECTRONICS CORPORATION. ALL RIGHTS RESERVED.

LOC	DIST	REVISIONS				
P	LTR	DESCRIPTION	DATE	DWN	APVD	
AF	50					
	N1	REVISED PER ECR-10-007904	16APR10	HMR	GP	



- 1 PRODUCT PROVIDED IN STRIP FORM ON REELS; BREAKS MAY BE PRESENT.
- 2 DIMENSIONS IN BRACKETS ARE IN INCHES.
- 3 FOR ADDITIONAL INFORMATION, SEE APPLICATION SPEC. 114-2002.
- 4 CRIMP WIDTH: .140 F TYPE (AMPLIVAR PIGTAIL)
 CRIMP HEIGHT (± 0.002) = (TOTAL CMA + 14600) / 243,900
 CRIMP WIDTH: .180 F TYPE (AMPLIVAR PIGTAIL)
 CRIMP HEIGHT (± 0.002) = (TOTAL CMA + 16100) / 305,400
 GENERAL APPLICATION GUIDELINES MUST BE FOLLOWED AS SPECIFIED IN CATALOG #82221
 FOR APPLICATOR INFORMATION CALL: 1-800-722-1111
 FOR PRODUCT INFORMATION CALL: 1-800-522-6752

OBSOLETE	REVERSE	TIN PLATE	62001-3
	STANDARD	TIN PLATE	62001-2
	STANDARD	-	62001-1
	REELING	FINISH	PART NO

THIS DRAWING IS A CONTROLLED DOCUMENT.		DWN	RAGHAVENDRA	27JUN06	Tyco Electronics Corporation Harrisburg, PA 17105-3608	
DIMENSIONS: mm [INCHES]		CHK	G.D.PORTA	-	NAME	
TOLERANCES UNLESS OTHERWISE SPECIFIED:		APVD	G.D.PORTA	-	PRODUCT SPEC	
0 PLC ± -		APPLICATION SPEC		SPLICE, AMPLIVAR 3000 - 7000 CMA		
1 PLC ± -		SIZE	A3	CAGE CODE	00779	DRAWING NO
2 PLC ± -		WEIGHT	-	DRAWING NO	62001	RESTRICTED TO
3 PLC ± 0.38 [.015]		CUSTOMER DRAWING		SCALE	10:1	SHEET
4 PLC ± - ± 1° 0'						1 OF 1
MATERIAL	REF 0.51 ± 0.03 (.020 ± .001) BRASS	FINISH		SEE TABLE	REV	N1