

4

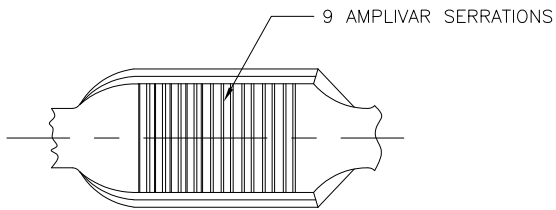
3

2

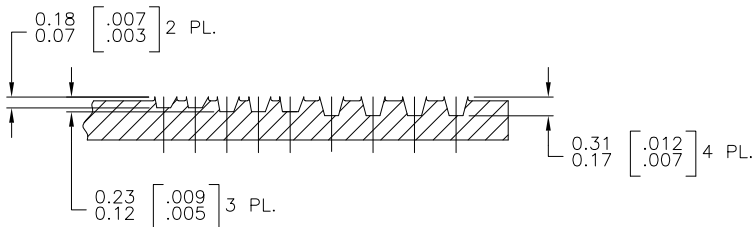
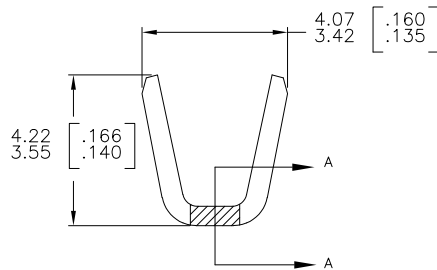
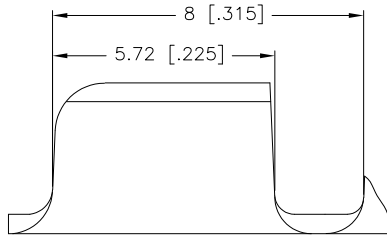
1

THIS DRAWING IS UNPUBLISHED. RELEASED FOR PUBLICATION
 © COPYRIGHT - By - ALL RIGHTS RESERVED.

| LOC | | DIST | | REVISIONS | | | |
|-----|-----|-------------|--|---------------------------|---------|------|-----|
| P | LTR | DESCRIPTION | | DATE | DWN | APVD | |
| AF | 50 | E5 | | REVISED PER ECO-11-004917 | 11MAR11 | RK | HMR |



- 1 PRODUCT PROVIDED IN STRIP FORM ON REELS; BREAKS MAY BE PRESENT.
- 2 DIMENSIONS IN BRACKETS ARE IN INCHES.
- 3 CRIMP WIDTH: .110 F (AMPLIVAR TYPE)
 CRIMP HEIGHT (±.002)=(TOTAL CMA +10,700)/193,400
 GENERAL APPLICATION GUIDELINES MUST BE FOLLOWED AS SPECIFIED IN CATALOG # 82221
 FOR APPLICATOR INFORMATION CALL: 1-800-722-1111
 FOR PRODUCT INFORMATION CALL: 1-800-522-6752



SECTION A-A
 SCALE : 20:1

62306-2

PART NO.

| | | | | | | |
|--|--|------------------|-------------|------------------|----------------------------|------------|
| THIS DRAWING IS A CONTROLLED DOCUMENT. | | DWN | 31JAN06 | | STE TE Connectivity | |
| | | CHK | RAGHAVENDRA | | | |
| DIMENSIONS: | | APVD | | NAME | | |
| mm [INCHES] | | G.D.PORTA | | SPLICE, AMPLIVAR | | |
| | | G.D.PORTA | | 1500-5000 CMA | | |
| | | PRODUCT SPEC | | | | |
| | | APPLICATION SPEC | | | | |
| | | 114-2003 | | SIZE | CAGE CODE | DRAWING NO |
| | | | | A3 | 00779 | C-62306 |
| MATERIAL | | FINISH | | RESTRICTED TO | | |
| REF 0.51±0.03 | | TIN PL. | | - | | |
| [.020±.001] BRASS | | | | SCALE | SHEET | 1 OF 1 |
| | | | | 10:1 | 1 | REV E5 |

