

4

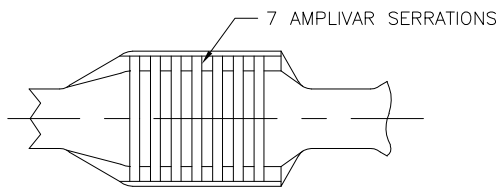
3

2

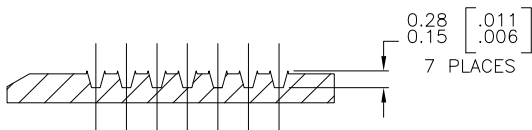
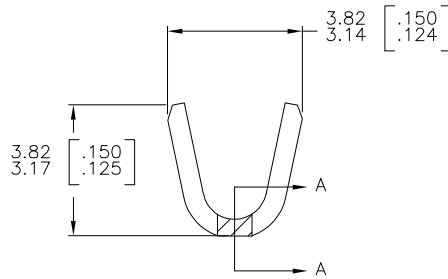
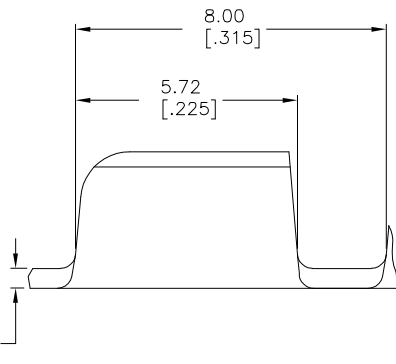
1

THIS DRAWING IS UNPUBLISHED. RELEASED FOR PUBLICATION
 © COPYRIGHT - BY TYCO ELECTRONICS CORPORATION. ALL RIGHTS RESERVED.

LOC		DIST		REVISIONS			
P	LTR	DESCRIPTION	DATE	DWN	APVD		
AF	50	L1	ECR-06-023927 (REDRAWN IN AUTOCAD)	27JUN06	HMR	GP	



- CONTINUOUS STRIP ON REELS.
- DIMENSIONS IN BRACKETS ARE IN INCHES.
- FOR ADDITIONAL INFORMATION, SEE APPLICATION SPEC. 114-2002.
- CRIMP WIDTH: .110 F TYPE (AMPLIVAR PIGTAIL)
 CRIMP HEIGHT ($\pm .002$) = (TOTAL CMA + 9,400) / 190,500
 GENERAL APPLICATION GUIDELINES MUST BE FOLLOWED AS SPECIFIED IN CATALOG #82221
 FOR APPLICATOR INFORMATION CALL: 1-800-722-1111
 FOR PRODUCT INFORMATION CALL: 1-800-522-6752



SECTION A-A
 SCALE 20:1

TIN PLATE	62000-2
-	62000-1
FINISH	PART NO

THIS DRAWING IS A CONTROLLED DOCUMENT.		DWN	27JUN06	Tyco Electronics Corporation Harrisburg, PA 17105-3608	
DIMENSIONS: mm [INCHES]		CHK	-		
TOLERANCES UNLESS OTHERWISE SPECIFIED: 0 PLC ± - 1 PLC ± - 2 PLC ± - 3 PLC ± 0.38 [.015] 4 PLC ± - ANGLES ± 1° 0'		APVD	-	NAME	
MATERIAL: BRASS		G.D.PORTA		SPLICE, AMPLIVAR 600-3000 CMA	
FINISH: SEE TABLE		G.D.PORTA		PRODUCT SPEC	
		APPLICATION SPEC		SIZE: A3	
		WEIGHT: -		CAGE CODE: 00779	
		CUSTOMER DRAWING		DRAWING NO: C-62000	
		SCALE: 10:1		RESTRICTED TO: -	
		SHEET: 1 OF 1		REV: L1	