

4

3

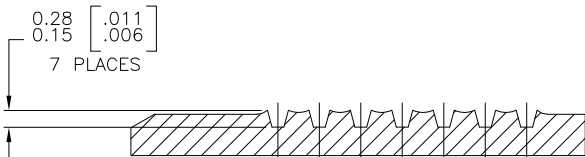
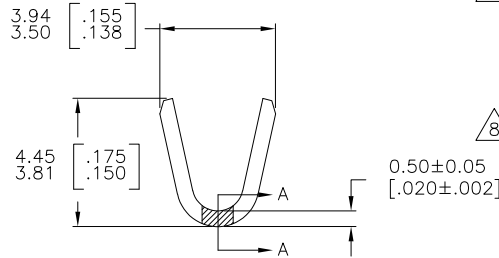
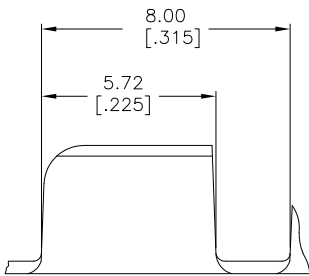
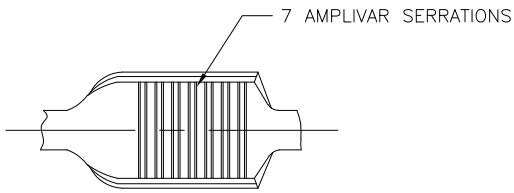
2

1

THIS DRAWING IS UNPUBLISHED. RELEASED FOR PUBLICATION
 © COPYRIGHT - BY TYCO ELECTRONICS CORPORATION. ALL RIGHTS RESERVED.

LOC	DIST	REVISIONS				
P	LTR	DESCRIPTION	DATE	DWN	APVD	
	K2	REVISED PER ECR-07-018788	20AUG07	HMR	GP	
	K3	REVISED PER ECO-09-021826	05JAN10	KK	AEG	

- 1 CONTINUOUS STRIP ON REELS
- 2 DIMENSIONS IN BRACKETS ARE IN INCHES
- 3 FOR ADDITIONAL INFORMATION, SEE APPLICATION SPEC. 114-2002
- △ 4 FOREIGN PRODUCTION PART NUMBER
- 6 WIRE RANGE: 1500 - 5000 CMA
- △ 7 CRIMP WIDTH: .110 F TYPE (AMPLIVAR PIGTAIL)
 CRIMP HEIGHT (±.002)=(TOTAL CMA+10,700)/193,400
 GENERAL APPLICATION GUIDELINES MUST BE FOLLOWED AS SPECIFIED IN CATALOG #82221
 FOR APPLICATOR INFORMATION CALL:1-800-722-1111
 FOR PRODUCT INFORMATION CALL:1-800-522-6752
- △ 8 OBSOLETE PARTS: OBSOLETE CIS STREAMLINING PER D.RENAUD/D.SINISI



SECTION A-A
SCALE 20:1

△ 8	OBSOLETE	SPECIAL	TIN PLATE	62040-6
△ 4	OBSOLETE	-	-	62040-5
△ 4	OBSOLETE	-	-	62040-4
△ 4	OBSOLETE	REVERSE	TIN PLATE	62040-3
		STANDARD	-	62040-2
		STANDARD	TIN PLATE	62040-1
		REELING	FINISH	PART NO

DIMENSIONS:		TOLERANCES UNLESS OTHERWISE SPECIFIED:		DWN		16OCT2006		Tyco Electronics		Tyco Electronics Corporation	
mm [INCHES]				CHK		G.D.PORTA		Harrisburg, PA 17105-3608		NAME	
		0 PLC ± -		APVD		G.D.PORTA		SPLICE, AMPLIVAR		RESTRICTED TO	
		1 PLC ± -		PRODUCT SPEC		-		SIZE		CAGE CODE	
		2 PLC ± -		APPLICATION SPEC		-		A3		00779	
		3 PLC ± 0.38[.015]		WEIGHT		-		C		62040	
		4 PLC ± -		MATERIAL		BRASS		SCALE		8:1	
		ANGLES ± 1° 0'		FINISH		SEE TABLE		SHEET		1 of 1	
								CUSTOMER DRAWING		REV	
										K3	