

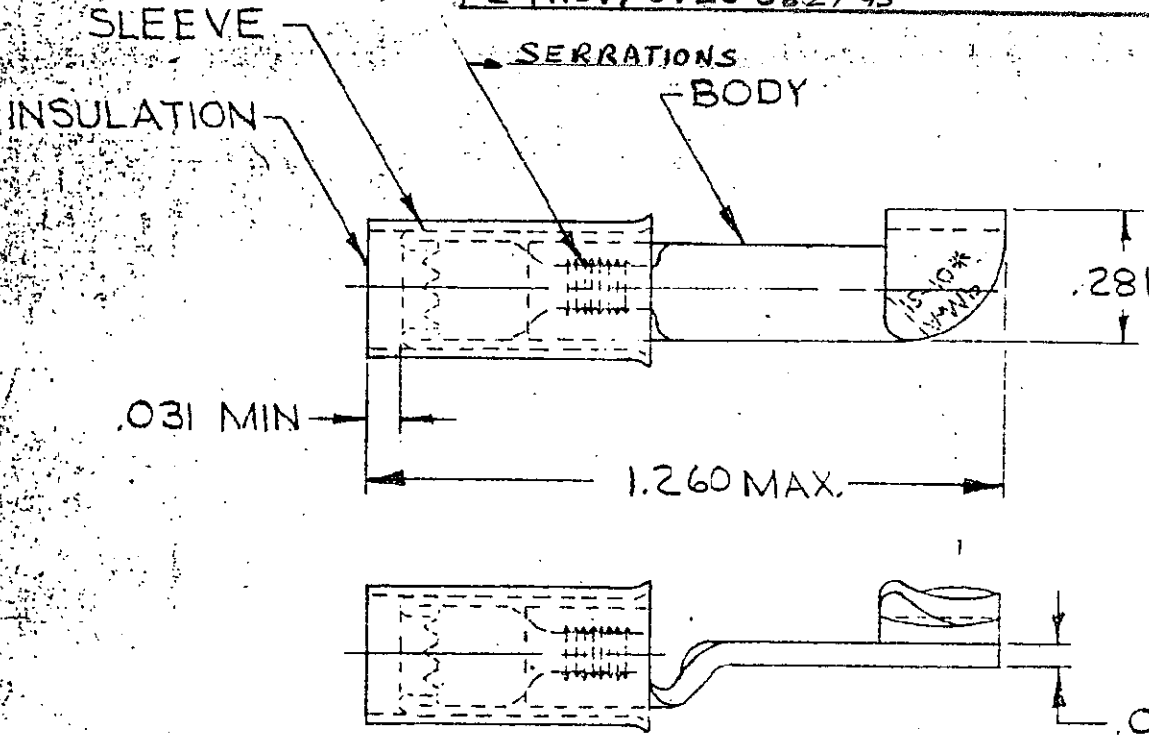
DRAWING MADE IN AMERICAN PROJECTION

LOC G 14 PRINT DIST

© 1949 BY AMP INCORPORATED, ALL RIGHTS RESERVED. AMP PRODUCTS COVERED BY PATENTS AND/OR PATENTS PENDING.

REVISIONS

LTR	DESCRIPTION	DATE	APPROVED
B	REDRAWN PER REV. P-6080	5-15-70	me
C	REV PER G-4732	7-26-88	PJG
D	REV / 0720-0036-93	3-8-93	me
E	REV / 0720-0827-95	ME 12	me



FOR .150 TO .250 WIRE INSULATION DIA.

QTY	DESCRIPTION	PART NO	MATERIAL & FINISH
50	LOOSE PC. BOX	8-35762-2	
1	WIRE TERMINAL	35762	INSULATION: NYLON COLOR: YELLOW SLEEVE: COPPER (QQ-C-576) BODY: COPPER (QQ-C-576) TIN PL (MIL-T-10727)
2500	PC. ON TAPE	2-35762-3	

UNLESS OTHERWISE SPECIFIED DIMENSIONS ARE IN INCHES  
TOLERANCES ON:  
DECIMALS ± .008  
ANGLES ± 5°

CONTRACT NO. — H —  
DR. M. J. L. 5-14-70  
CHK. *[Signature]* 5-15-70  
APPD. *[Signature]* 5-15-70  
REL. *[Signature]* 5-18-70  
DSCR APPD. *[Signature]*  
OTHER APPD.

**AMP** AMP INCORPORATED  
HARRISBURG, PENNSYLVANIA

NAME: WIRE TERMINAL  
PIDG - KNIFE-DISCONNECT  
WIRE SIZE: 12-10

SIZE: A CODE IDENT NO.: 00779  
SCALE: NTS SHEET: 1 OF 1

MATERIAL: SEE TABLE