



# PS CONNECTOR

Connectors for tabs

- Secure locking, easy insertion
- Stable contact performance
- Mis-insertion prevention mechanism and housing lance

## Standards

Recognized E60389

Certified LR20812

R9850196

## Specifications

- Current rating: 25A AC, DC(#250/AWG #10)
- Voltage rating: 250V AC, DC
- Temperature range: -40°C to +105°C  
(including temperature rise in applying electrical current)
- Contact resistance: Initial value/ 3m Ω max.  
After environmental testing/ 6m Ω max.
- Insulation resistance: 1,000M Ω min.
- Withstanding voltage: 2,000V AC/ minute
- Applicable wire: #110...AWG #24 to #16  
#187...AWG #26 to #14  
#205...AWG #22 to #14  
#250...AWG #22 to #10
- Applicable Tab: #110 Tab 0.5mm thick  
#187 Tab 0.5mm/0.8mm thick  
#205 Tab 0.5mm/0.8mm thick  
#250 Tab 0.8mm thick

\* Compliant with RoHS.

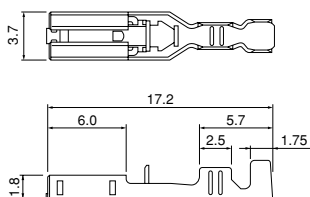
\* Refer to "General Instruction and Notice when using Terminals and Connectors" at the end of this catalog.

\* Contact JST for details.

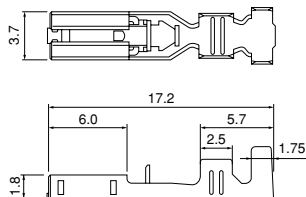
## Contact

### #110 Series

SPS-01T-110



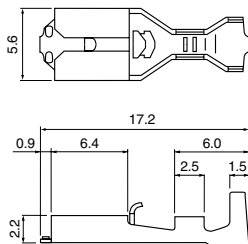
SPS-41T-110



### #187 Series

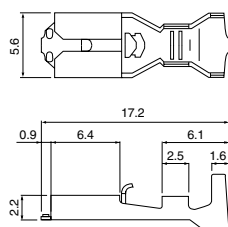
SPS-01T-187

(for 0.5mm thick tabs)



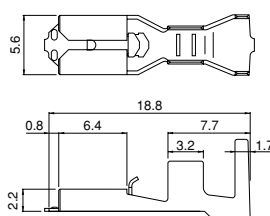
SPS-51T-187

(for 0.5mm thick tabs)



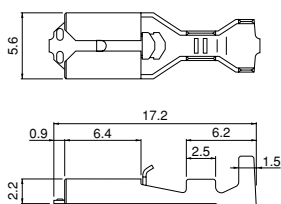
SPS-82T-187

(for 0.5mm thick tabs)



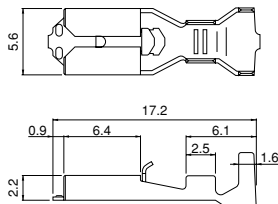
SPS-01T-187-8

(for 0.8mm thick tabs)



SPS-51T-187-8

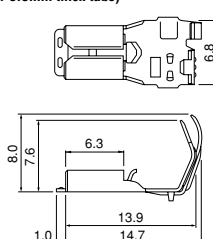
(for 0.8mm thick tabs)



<Flag type>

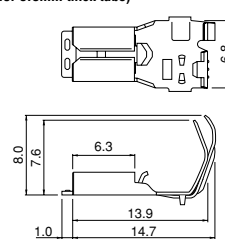
SFPS-41T-187

(for 0.5mm thick tabs)



SFPS-41T-187-8

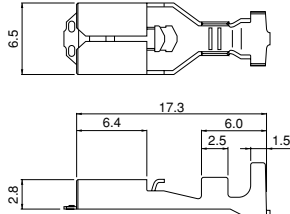
(for 0.8mm thick tabs)



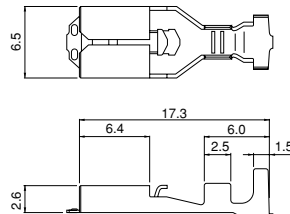
## Contact

### #205 Series

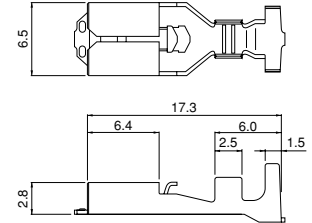
**SPS-21T-205**  
(for 0.8mm thick tabs)



**SPS-21T-205-5**  
(for 0.5mm thick tabs)

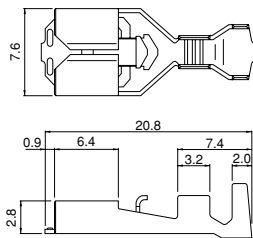


**SPS-51T-205**  
(for 0.8mm thick tabs)

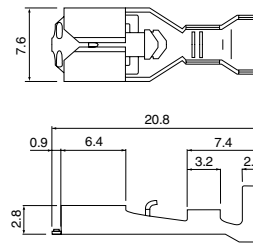


### #250 Series

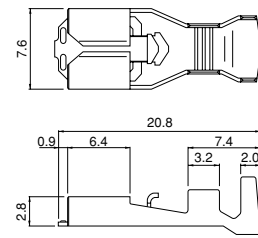
**SPS-21T-250**



**SPS-61T-250**

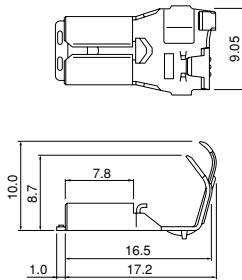


**SPS-91T-250**

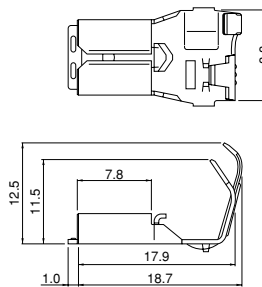


### <Flag type>

**SFPS-61T-250**

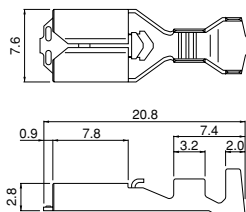


**SFPS-91T-250**

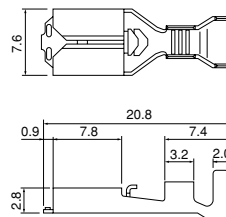


### #250S Series

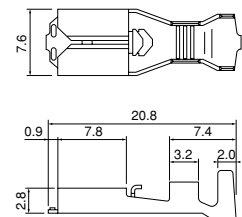
**SPS-21T-250S**



**SPS-61T-250S**



**SPS-91T-250S**



# PS CONNECTOR

## Contact

Series	Model No.	Applicable wire		Insulation O.D.(mm)	Q'ty / reel	
		mm <sup>2</sup>	AWG #			
#110	SPS-01T-110	0.21~0.5	24~20	1.0~2.5	10,000	
	SPS-41T-110	0.5 ~ 1.31	20~16	1.9~3.4	10,000	
#187	for 0.5mm thick tabs	SPS-01T-187	0.13~0.5	26~20	1.3~3.4	
		SPS-51T-187	0.5 ~ 2.0	20~14	1.9~3.6	
	for 0.8mm thick tabs	SPS-82T-187	0.75+0.75~1.25+1.25	18+18~16+16	2.1+2.1~2.9+2.9	3,500
		SPS-01T-187-8	0.13~0.5	26~20	1.3~3.4	10,000
#187 flag	for 0.5mm thick tabs for 0.8mm thick tabs	SFPS-41T-187	0.3 ~ 1.25	22~16	1.7~3.4	
		SFPS-41T-187-8	0.3 ~ 1.31	22~16	1.7~3.4	
#205	for 0.8mm thick tabs for 0.5mm thick tabs for 0.8mm thick tabs	SPS-21T-205	0.3 ~ 0.75	22~18	1.5~3.1	
		SPS-21T-205-5	0.3 ~ 0.75	22~18	1.5~3.1	
		SPS-51T-205	0.5 ~ 2.0	20~14	1.9~3.6	
#250	for 0.8mm thick tabs	SPS-21T-250	0.3 ~ 0.75	22~18	1.5~3.1	
		SPS-61T-250	0.75~2.0	18~14	2.1~3.9	
		SPS-91T-250	2.0 ~ 5.5	14~10	3.0~4.7	
#250 flag	for 0.8mm thick tabs	SFPS-61T-250	0.75~2.0	18~14	2.1~3.9	
		SFPS-91T-250	3.5 ~ 5.5	12~10	4.0~5.2	
#250S	for 0.8mm thick tabs	SPS-21T-250S	0.3 ~ 0.75	22~18	1.5~3.1	
		SPS-61T-250S	0.75~2.0	18~14	2.1~3.9	
		SPS-91T-250S	2.0 ~ 5.5	14~10	3.0~4.7	

### Material and Finish

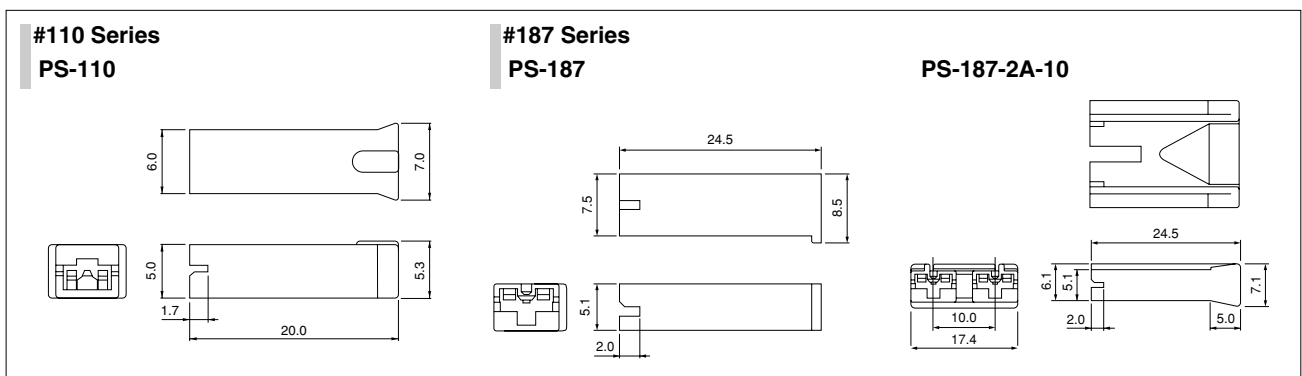
Brass, tin-plated (reflow treatment)

## RoHS compliance

Contact	Crimping machine	Applicator		
		Crimp applicator	Dies	Crimp applicator with dies
SPS-01T-110	AP-K2N	MK-L-SPS	MK/SPS-01-110	APLMK SPS01-110
		—	—	—
SPS-41T-110		MK-L-SPS	MK/SPS-41-110	APLMK SPS41-110
		—	—	—
SPS-01T-187 (-8)		MK-L-SPS	MK/SPS-01-187	APLMK SPS01-187
		—	—	—
SPS-51T-187 (-8)		MK-L-SPS	MK/SPS-51-187	APLMK SPS51-187
SPS-82T-187		MK-L-SPS	MK/SPS-82-187	APLMK SPS82-187
		—	—	—
SFPS-41T-187 (-8)		MKF-L-PS187	MK/SFPS-41-187	APL SFPS41-187
SPS-21T-205 (-5)	MK-L-SPS	MK/SPS-21-205	APLMK SPS21-205	
	—	—	—	

Contact	Crimping machine	Applicator		
		Crimp applicator	Dies	Crimp applicator with dies
SPS-51T-205	AP-K2N	MK-L-SPS	MK/SPS-51-205	APLMK SPS51-205
		—	—	—
SPS-21T-250 (S)		MK-L-SPS	MK/SPS-21-250	APLMK SPS21-250
		—	—	—
SPS-61T-250 (S)		MK-L-SPS	MK/SPS-61-250	APLMK SPS61-250
		—	—	—
SPS-91T-250 (S)		MK-L-SPS	MK/SPS-91-250	APLMK SPS91-250
		—	—	—
SFPS-61T-250		MKF-L-PS250	MK/SFPS-61-250	APL SFPS61-250
		—	—	—
SFPS-91T-250	MKF-L-PS9250	MK/SFPS-91-250	APL SFPS91-250	
	—	—	—	

## Housing

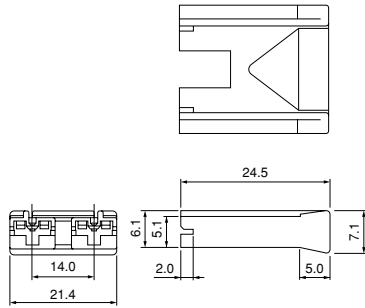


# PS CONNECTOR

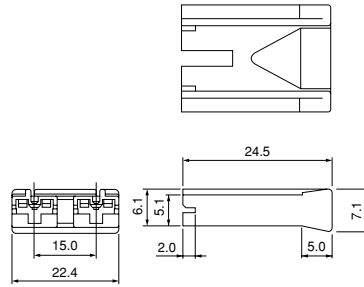
## Housing

### #187 Series

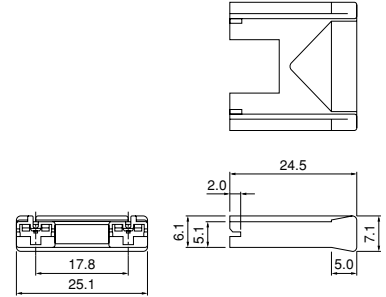
**PS-187-2A-14**



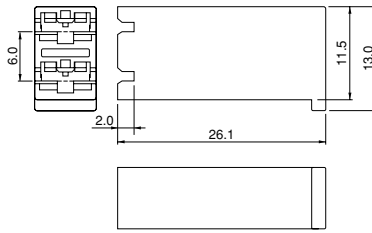
**PS-187-2A-15**



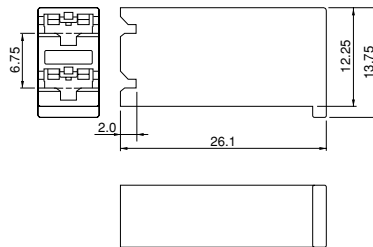
**PS-187-2A-17.8**



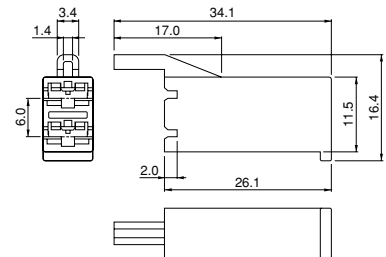
**PS-187-2B**



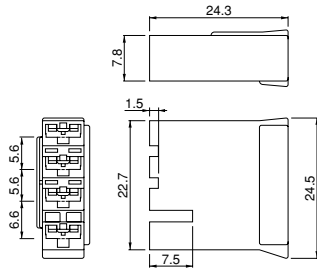
**PS-187-2B-6.75**



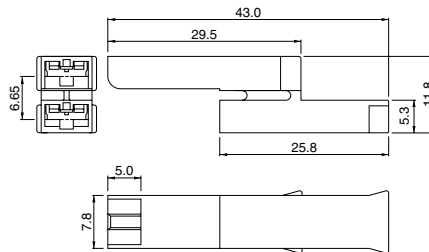
**PS-187-2B1**



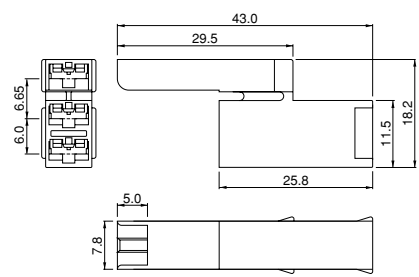
**PS-187-4B**



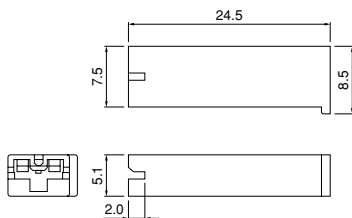
**PS-187-2V**



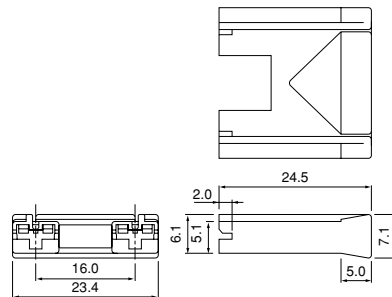
**PS-187-3V**



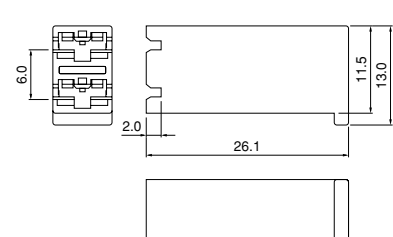
**PS-187-8-H**



**PS-187-2A-16-8-H**



**PS-187-2B-8-H**

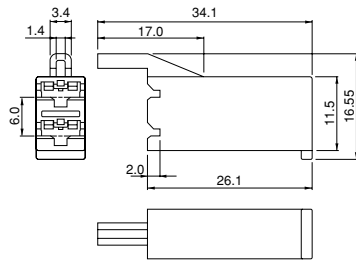


# PS CONNECTOR

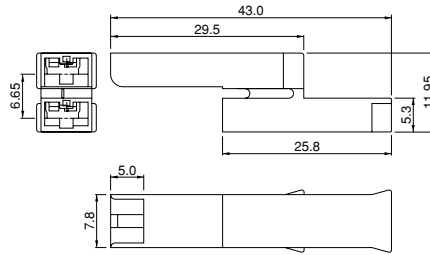
## Housing

### #187 Series

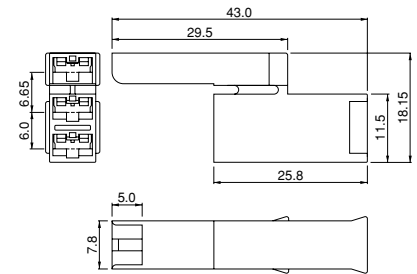
**PS-187-2B1-8-H**



**PS-187-2V-8-H**

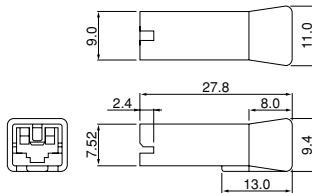


**PS-187-3V-8-H**



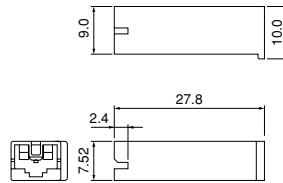
### #250S Series

**NPS-250-A**

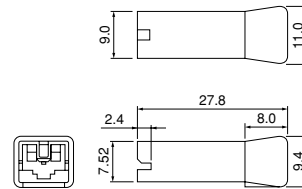


### #250 Series

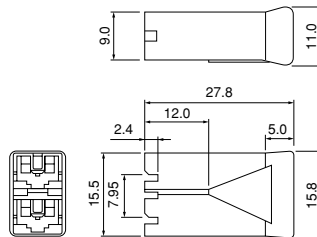
**PS-250**



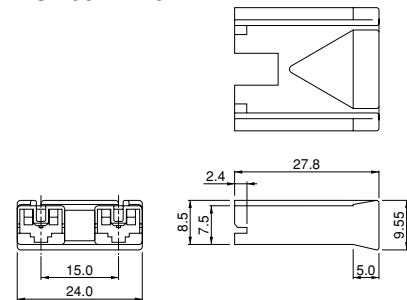
**PS-250-A**



**PS-250-2B**

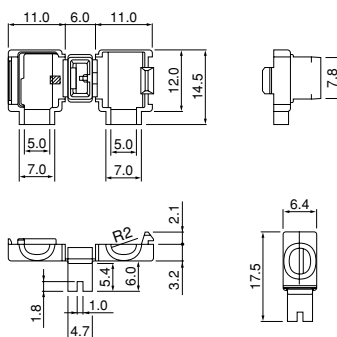


**PS-250-2A-15**

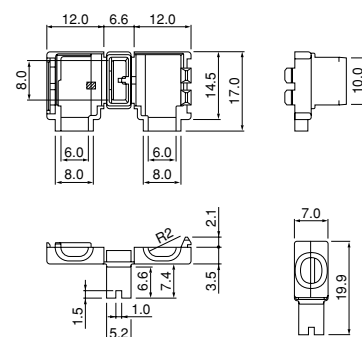


### One-touch sleeve

**FPS-187**



**FPS-250**



# PS CONNECTOR

## Housing

Series	Model No.	Q'ty / bag	Applicable terminal
#110	PS-110	1,000	SPS-01T-110, SPS-41T-110
	PS-187	1,000	
	PS-187-2A-10	500	
	PS-187-2A-14	500	
	PS-187-2A-15	500	
	PS-187-2A-17.8	500	
	PS-187-2B	500	
	PS-187-2B-6.75	500	
	PS-187-2B1	500	
	PS-187-4B	500	
	PS-187-2V	500	
	PS-187-3V	500	
	*PS-187-8-H	1,000	
	*PS-187-2A-16-8-H	500	
*PS-187-2B-8-H	500		
*PS-187-2B1-8-H	500		
*PS-187-2V-8-H	500		
*PS-187-3V-8-H	500		
#187			SPS-01T-187-8 SPS-51T-187-8 SPS-82T-187
#250S	NPS-250-A	1,000	SPS-21T-250S SPS-61T-250S SPS-91T-250S
#250	PS-250	1,000	SPS-21T-250 SPS-61T-250 SPS-91T-250
	PS-250-A	500	
	PS-250-2B	500	
	PS-250-2A-15	500	
One-touch sleeve	FPS-187	500	SFPS-41T-187
	FPS-250	500	SFPS-61T-250

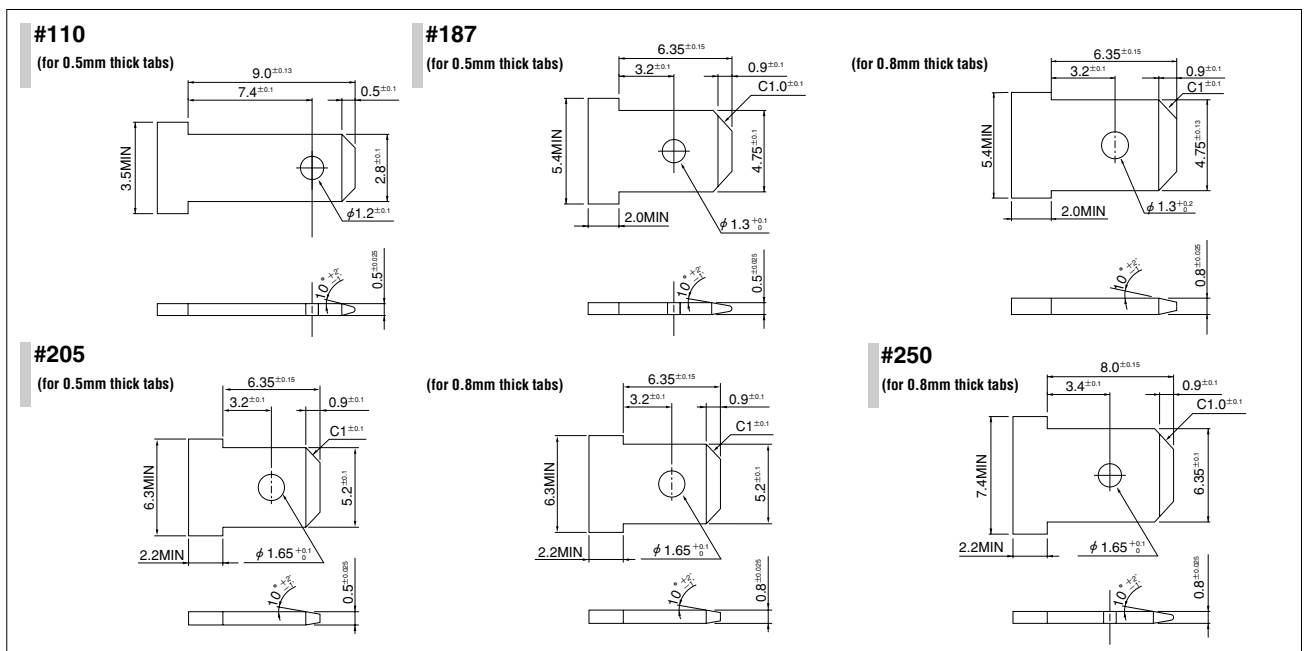
### Material and Finish

PA 66, UL94V-0, natural (white)  
UL94V-0, gray <\*-marked housing...for 0.8mm thick tabs>

### RoHS compliance

Note: FPS-187 and FPS-250 are UL recognized with File No. E55167 and CSA certified with File No. LR83372, but not TÜV approved.

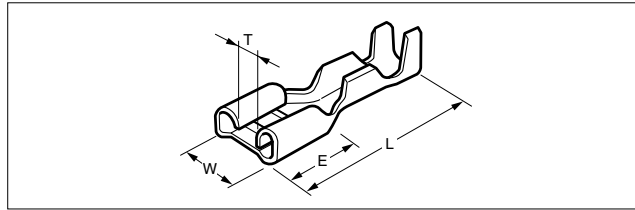
## Applicable tab



- Note:
1. Contact JST when using PS connector for Micro-switch.
  2. Make sure there are no unneeded ribs or other protuberances on tab surfaces.
  3. Use the brass product for material.
  4. Contact JST when using PS-187-4B.

# CHAIN TERMINAL Made in Belgium

## STO series (Tab-on Straight) <Made in Belgium>



UL Listed file No. E70188 DIN 46247

Model No.	Standard	Applicable wire			Material	Finish	Dimensions(mm)						
		mm <sup>2</sup>	AWG #	Insulation O.D. (mm)			W	L	E	T	Material thickness	Mating tab thickness	Q'ty / reel
STO-1.0-250N	UL LISTED	0.5 to 1.0	20 to 18	2.0 to 3.3	Brass	—	7.6	19.2	7.6	1.6	0.45	0.8	5,000
STO-1.0T-250N						Tin-plated							
STO-1.0-250NL *	UL LISTED	0.5 to 1.0	20 to 18	2.0 to 3.3	Brass	—	7.6	19.2	7.6	1.6	0.45	0.8	5,000
STO-1.0T-250NL *						Tin-plated							
STO-2.5-250N	UL LISTED	1.0 to 2.5	18 to 14	2.7 to 4.3	Brass	—	7.6	19.2	7.6	1.6	0.45	0.8	5,000
STO-2.5T-250N						Tin-plated							
STO-2.5-250NL *	UL LISTED	1.0 to 2.5	18 to 14	2.7 to 4.3	Brass	—	7.6	19.2	7.6	1.6	0.45	0.8	5,000
STO-2.5T-250NL *						Tin-plated							
STO-6.0-250N	UL LISTED	2.5 to 6.0	14 to 10	3.9 to 5.1	Brass	—	7.6	19.2	7.6	1.6	0.45	0.8	4,000
STO-6.0T-250N						Tin-plated							
STO-1.0-187N-5	UL LISTED	0.5 to 1.0	20 to 18	2.0 to 3.3	Brass	—	5.8	15.6	6.4	1.0	0.35	0.5	8,000
STO-1.0T-187N-5						Tin-plated							
STO-1.0-187N-8	UL LISTED	0.5 to 1.0	20 to 18	2.0 to 3.3	Brass	—	5.8	15.6	6.4	1.0	0.35	0.8	8,000
STO-1.0T-187N-8						Tin-plated							
STO-0.25-110N-5	UL LISTED	0.1 to 0.25	26 to 24	1.3 to 1.5	Brass	—	3.7	14.5	6.2	0.3	0.25	0.5	15,000
STO-0.25T-110N-5						Tin-plated							
STO-0.25-110N-8	UL LISTED	0.1 to 0.25	26 to 24	1.3 to 1.5	Brass	—	3.7	14.5	6.2	0.3	0.25	0.8	15,000
STO-0.25T-110N-8						Tin-plated							
STO-0.5-110N-5	UL LISTED	0.25 to 0.5	24 to 20	1.5 to 2.0	Brass	—	3.7	14.5	6.2	0.3	0.25	0.5	15,000
STO-0.5T-110N-5						Tin-plated							
STO-0.5-110N-8	UL LISTED	0.25 to 0.5	24 to 20	1.5 to 2.0	Brass	—	3.7	14.5	6.2	0.3	0.25	0.8	15,000
STO-0.5T-110N-8						Tin-plated							
STO-1.0-110N-5	UL LISTED	0.5 to 1.0	20 to 18	2.0 to 3.3	Brass	—	3.7	14.5	6.2	0.3	0.25	0.5	15,000
STO-1.0T-110N-5						Tin-plated							
STO-1.0-110N-8	UL LISTED	0.5 to 1.0	20 to 18	2.0 to 3.3	Brass	—	3.7	14.5	6.2	0.3	0.25	0.8	15,000
STO-1.0T-110N-8						Tin-plated							
STO-1.0-110B-5	UL LISTED	0.5 to 1.0	20 to 18	2.0 to 3.3	Brass	—	3.7	14.5	6.2	0.3	0.25	0.5	15,000
STO-1.0T-110B-5						Tin-plated							
STO-1.0-110B-8	UL LISTED	0.5 to 1.0	20 to 18	2.0 to 3.3	Brass	—	3.7	14.5	6.2	0.3	0.25	0.8	15,000
STO-1.0T-110B-8						Tin-plated							

### RoHS compliance

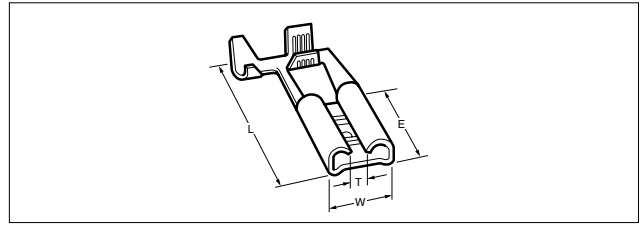
Note: 1. Terminals of phosphor bronze or nickel-silver are also available. Contact J.S.T. Belgium N.V. for details  
2. \*L=Low insertion force type.

## Crimping machine, Applicator

Contact	Crimping machine	Applicator		
		Crimp applicator	Dies	Crimp applicator with dies
STO-0.25(T)-110N-5	AP-K2N	MK-L	MK/STO-0.25-110N	APLMK STO025-110N
STO-0.25(T)-110N-8			MK/STO-0.25-110N	APLMK STO025-110N
STO-0.5(T)-110N-5			MK/STO-0.5-110N	APLMK STO05-110N
STO-0.5(T)-110N-8			MK/STO-0.5-110N	APLMK STO05-110N
STO-1.0(T)-110N-5			MK/STO-1.0-110N	APLMK STO10-110N
STO-1.0(T)-110N-8			MK/STO-1.0-110N	APLMK STO10-110N
STO-1.0(T)-187N-5			MK/STO-1.0-187N	APLMK STO10-187N
STO-1.0(T)-187N-8			MK/STO-1.0-187N	APLMK STO10-187N
STO-1.0(T)-250N			MK/STO-1.0-250N	APLMK STO10-250N
STO-2.5(T)-250N			MK/STO-2.5-250N	APLMK STO25-250N
STO-6.0(T)-250N			MK/STO-6.0-250N	APLMK STO60-250N

# CHAIN TERMINAL

## SFO series (Tab-on flag) <Made in Belgium>



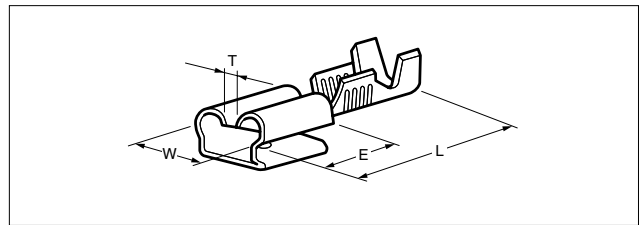
UL Listed file No. E70188 DIN 46346

Model No.	Standard	Applicable wire			Material	Finish	Dimensions(mm)						Q'ty / reel
		mm <sup>2</sup>	AWG #	Insulation O.D. (mm)			W	L	E	T	Material thickness	Mating tab thickness	
SFO-1.0-250N	UL LISTED	0.5 to 1.0	20 to 18	2.0 to 3.3	Brass	—	7.6	14.1	7.6	2.3	0.4	0.8	3,000
SFO-1.0T-250N						Tin-plated							
SFO-2.5-250N	UL LISTED	1.0 to 2.5	18 to 14	2.7 to 4.3		—							
SFO-2.5T-250N						Tin-plated							

### RoHS compliance

Note: Terminals of phosphor bronze or nickel-silver are also available. Contact J.S.T. Belgium N.V. for details.

## SPB series (Tab-on piggyback) <Made in Belgium>



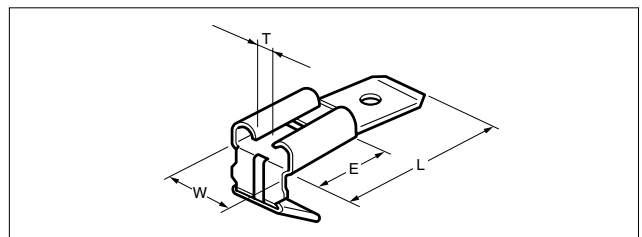
DIN 46345

Model No.	Standard	Applicable wire			Material	Finish	Dimensions(mm)						Q'ty / reel
		mm <sup>2</sup>	AWG #	Insulation O.D. (mm)			W	L	E	T	Material thickness	Mating tab thickness	
SPB-1.0-250N-S		0.5 to 1.0	20 to 18	2.0 to 3.3	Brass	—	7.6	19.0	7.7	2.2	0.39	0.8	1,300
SPB-1.0T-250N-S						Tin-plated							
SPB-2.5-250N-S		1.0 to 2.5	18 to 14	2.7 to 4.3	Brass	—							
SPB-2.5T-250N-S						Tin-plated							

### RoHS compliance

Note: Terminals of phosphor bronze or nickel-silver are also available. Contact J.S.T. Belgium N.V. for details.

## MPB series (Tab-on with two tabs) <Made in Belgium>



UL Listed file No. E70188 DIN 46347

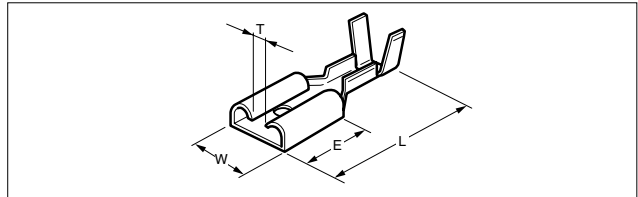
Model No.	Standard	Material	Finish	Dimensions(mm)							Q'ty / reel
				W	L	E	T	Material thickness	Tab thickness	Mating tab thickness	
MPB-250	UL LISTED	Brass	—	7.6	18.3	7.5	2.4	0.39	0.8	0.8	10,000
MPB-T-250			Tin-plated								7,500

### RoHS compliance



# CHAIN TERMINAL

## STI series (Tab-in, with dimple) <Made in Belgium>

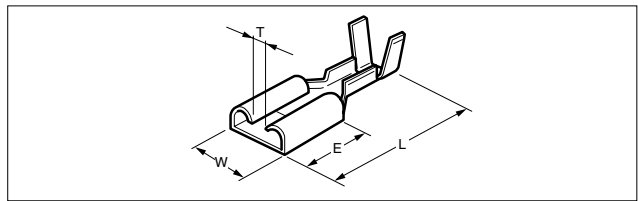


DIN 46340

Model No.	Standard	Applicable wire			Material	Finish	Dimensions(mm)					Q'ty / reel	
		mm <sup>2</sup>	AWG #	Insulation O.D. (mm)			W	L	E	T	Material thickness		Mating tab thickness
STI-1.0-250D		0.5 to 1.0	20 to 18	2.0 to 3.3	Brass	—	7.4	20.0	7.6	1.5	0.35	0.8	5,000
STI-1.0T-250D						Tin-plated							
STI-2.5-250D		1.0 to 2.5	18 to 14	2.7 to 4.3	Brass	—	7.4	20.0	7.6	1.5	0.35	0.8	4,000
STI-2.5T-250D						Tin-plated							

RoHS compliance

## STI series (Tab-in, without dimple) <Made in Belgium>

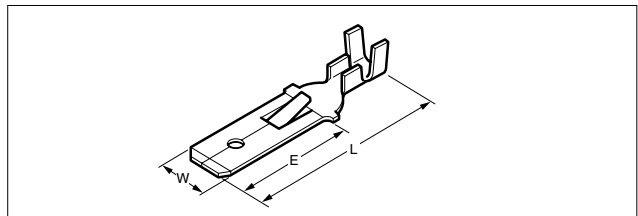


DIN 46340

Model No.	Standard	Applicable wire			Material	Finish	Dimensions(mm)					Q'ty / reel	
		mm <sup>2</sup>	AWG #	Insulation O.D. (mm)			W	L	E	T	Material thickness		Mating tab thickness
STI-1.0-250N		0.5 to 1.0	20 to 18	2.0 to 3.3	Brass	—	7.4	20.0	7.6	1.5	0.35	0.8	5,000
STI-1.0T-250N						Tin-plated							
STI-2.5-250N		1.0 to 2.5	18 to 14	2.7 to 4.3	Brass	—	7.4	20.0	7.6	1.5	0.35	0.8	4,000
STI-2.5T-250N						Tin-plated							

RoHS compliance

## SIM series (Tab-in) <Made in Belgium>



DIN 46343

Model No.	Standard	Applicable wire			Material	Finish	Dimensions(mm)					Q'ty / reel
		mm <sup>2</sup>	AWG #	Insulation O.D. (mm)			W	L	E	Material thickness	Tab thickness	
SIM-1.0-250D		0.5 to 1.0	20 to 18	2.0 to 3.3	Brass	—	6.3	28.0	16.0	0.39	0.82	4,000
SIM-1.0T-250D						Tin-plated						
SIM-1.0-250DU						—						
SIM-1.0T-250DU						Tin-plated						
SIM-2.5-250D		1.0 to 2.5	18 to 14	2.7 to 4.3	Brass	—	6.3	28.0	16.0	0.39	0.82	3,000
SIM-2.5T-250D						Tin-plated						
SIM-2.5-250DU						—						
SIM-2.5T-250DU						Tin-plated						

RoHS compliance

Note: Lance height D = 2.3 mm DU = 2.7 mm ...this dimension is not according to DIN.

# CHAIN TERMINAL

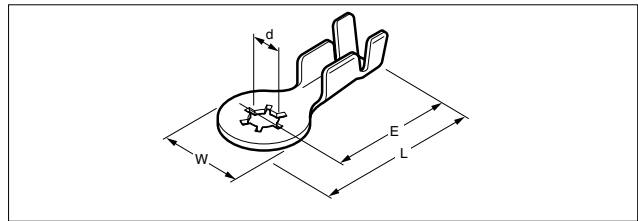
## Crimping machine, Applicator

Contact	Crimping machine	Applicator		
		Crimp applicator	Dies	Crimp applicator with dies
<b>SFO-1.0(T)-250N</b>	AP-K2N	MKS-L-FO	MK/SFO-1.0-250N	APLMK SFO10-250N
<b>SFO-2.5(T)-250N</b>			MK/SFO-2.5-250N	APLMK SFO25-250N
<b>SPB-1.0(T)-250N-S</b>		MKS-L	MK/SPB-1.0-250NS	APLMK SPB1.0-250N
<b>SPB-2.5(T)-250N-S</b>			MK/SPB-2.5-250NS	APLMK SPB2.5-250N

Contact	Crimping machine	Applicator		
		Crimp applicator	Dies	Crimp applicator with dies
<b>SIM-1.0(T)-250D</b>	AP-K2N	MK-L-IM	MK/SIM-1.0-250D	APLMK SIM1.0-250D
<b>SIM-2.5(T)-250D</b>			MK/SIM-2.5-250D	APLMK SIM2.5-250D
<b>STI-1.0(T)-250D</b>		MK-L	MK/STI-1.0-250D/N	APLMK STI1.0-250D/N
<b>STI-1.0(T)-250N</b>			MK/STI-1.0-250D/N	APLMK STI1.0-250D/N
<b>STI-2.5(T)-250D</b>			MK/STI-2.5-250D/N	APLMK STI2.5-250D/N
<b>STI-2.5(T)-250N</b>			MK/STI-2.5-250D/N	APLMK STI2.5-250D/N

# CHAIN TERMINAL

## SRT series <Made in Belgium>



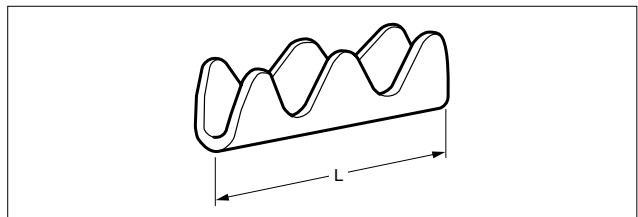
Recognized E42024

Certified LR20812

Model No.	Standard	Applicable wire			Material	Finish	Dimensions(mm)					Q'ty / reel
		mm <sup>2</sup>	AWG #	Insulation O.D. (mm)			W	L	E	d (dia.)	Material thickness	
SRT-1.0T-M5S		0.5 to 1.0	20 to 18	2.0 to 3.3	Steel	Tin-plated	9.5	21.75	17.0	5.3	0.6	4,000
SRT-2.5T-M5S		1.0 to 2.5	18 to 14	2.7 to 4.3								

RoHS compliance

## SPC series (Splice) <Made in Belgium>



Model No.	Standard	Applicable wire		Material	Finish	Dimensions(mm)		Q'ty / reel
		mm <sup>2</sup>	AWG #			L	Material thickness	
SPC-1.0		0.5 to 1.0	20 to 18	Brass	—	6.0	0.25	30,000
SPC-1.0T					Tin-plated			
SPC-2.5		1.0 to 2.5	18 to 14		—	7.0		
SPC-2.5T					Tin-plated			

RoHS compliance

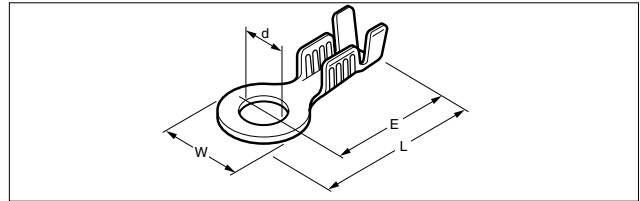
Note: The applicable wire size (total sectional area) above serves as a basic guideline. Before use, the performance of this connector must be tested with the wire that is to be used.

## Crimping machine, Applicator

Contact	Crimping machine	Applicator		
		Crimp applicator	Dies	Crimp applicator with dies
SRT-1.0T/N-M5S	AP-K2N	MK-L	MK/SRT-1.0	APLMK SRT1.0-M5
SRT-2.5T/N-M5S			MK/SRT-2.5	APLMK SRT2.5-M5
SPC-1.0(T)		MK-L-PC	MK/SPC-1.0	APLMK SPC1.0
SPC-2.5(T)			MK/SPC-2.5	APLMK SPC2.5

# CHAIN TERMINAL

## SRB series (With insulation grip) <Made in Belgium>



UL Listed file No. E42024 DIN 46225 (except \*-marked items)

Model No.	Standard	Applicable wire			Material	Finish	Dimensions(mm)					Q'ty / reel
		mm <sup>2</sup>	AWG #	Insulation O.D. (mm)			W	L	E	d (dia.)	Material thickness	
SRB-1.0-M3	UL LISTED	0.5 to 1.0	20 to 18	2.0 to 3.3	Brass	—	8.0	21.0	17.0	3.2	0.6	5,000
SRB-1.0T-M3						Tin-plated						
SRB-1.0-M3-W9.5 *						—						
SRB-1.0T-M3-W9.5 *	UL LISTED	0.5 to 1.0	20 to 18	2.0 to 3.3	Brass	—	9.5	21.75	17.0	3.2	0.6	4,000
SRB-2.5-M3	UL LISTED	1.0 to 2.5	18 to 14	2.7 to 4.3	Brass	—	8.0	21.0	17.0	3.2	0.6	4,000
SRB-2.5T-M3						Tin-plated						
SRB-2.5-M3-W9.5 *						—						
SRB-2.5T-M3-W9.5 *	UL LISTED	1.0 to 2.5	18 to 14	2.7 to 4.3	Brass	—	9.5	21.75	17.0	3.2	0.6	4,000
SRB-1.0-M4	UL LISTED	0.5 to 1.0	20 to 18	2.0 to 3.3	Brass	—	8.0	21.0	17.0	4.3	0.6	5,000
SRB-1.0T-M4						Tin-plated						
SRB-1.0-M4-W9.5 *						—						
SRB-1.0T-M4-W9.5 *	UL LISTED	0.5 to 1.0	20 to 18	2.0 to 3.3	Brass	—	9.5	21.75	17.0	4.3	0.6	4,000
SRB-2.5-M4	UL LISTED	1.0 to 2.5	18 to 14	2.7 to 4.3	Brass	—	8.0	21.0	17.0	4.3	0.6	4,000
SRB-2.5T-M4						Tin-plated						
SRB-2.5-M4-W9.5 *						—						
SRB-2.5T-M4-W9.5 *	UL LISTED	1.0 to 2.5	18 to 14	2.7 to 4.3	Brass	—	9.5	21.75	17.0	4.3	0.6	4,000
SRB-1.0-M5-W8 *	UL LISTED	0.5 to 1.0	20 to 18	2.0 to 3.3	Brass	—	8.0	21.0	17.0	5.3	0.6	5,000
SRB-1.0T-M5-W8 *						Tin-plated						
SRB-1.0-M5						—						
SRB-1.0T-M5	UL LISTED	0.5 to 1.0	20 to 18	2.0 to 3.3	Brass	—	9.5	21.75	17.0	5.3	0.6	4,000
SRB-2.5-M5-W8 *	UL LISTED	1.0 to 2.5	18 to 14	2.7 to 4.3	Brass	—	8.0	21.0	17.0	5.3	0.6	4,000
SRB-2.5T-M5-W8 *						Tin-plated						
SRB-2.5-M5						—						
SRB-2.5T-M5	UL LISTED	1.0 to 2.5	18 to 14	2.7 to 4.3	Brass	—	9.5	21.75	17.0	5.3	0.6	4,000
SRB-1.0-M6 *	UL LISTED	0.5 to 1.0	20 to 18	2.0 to 3.3	Brass	—	9.5	21.75	17.0	6.5	0.6	4,000
SRB-1.0T-M6 *						Tin-plated						
SRB-2.5-M6 *						—						
SRB-2.5T-M6 *	UL LISTED	1.0 to 2.5	18 to 14	2.7 to 4.3	Brass	—	9.5	21.75	17.0	6.5	0.6	4,000
SRB-2.5T-M6 *	UL LISTED	1.0 to 2.5	18 to 14	2.7 to 4.3	Brass	Tin-plated	9.5	21.75	17.0	6.5	0.6	4,000

RoHS compliance

## Crimping machine, Applicator

Contact	Crimping machine	Applicator		
		Crimp applicator	Dies	Crimp applicator with dies
SRB-1.0(T)-M3/4	AP-K2N	MK-L	MK/SRB-1.0-W8	APLMK SRB10-W8
SRB-1.0(T)-M5-W8			MK/SRB-1.0-W8	APLMK SRB10-W8
SRB-1.0(T)-M3/4-W9.5			MK/SRB-1.0-W9.5	APLMK SRB10-W9.5
SRB-1.0(T)-M5/6			MK/SRB-1.0-W9.5	APLMK SRB10-W9.5
SRB-2.5(T)-M3/4			MK/SRB-2.5-W8	APLMK SRB25-W8
SRB-2.5(T)-M5-W8			MK/SRB-2.5-W8	APLMK SRB25-W8
SRB-2.5(T)-M3/4-W9.5			MK/SRB-2.5-W9.5	APLMK SRB25-W9.5
SRB-2.5(T)-M5/6			MK/SRB-2.5-W9.5	APLMK SRB25-W9.5

\* Compliant with RoHS.

\* Refer to "General Instruction and Notice when using Terminals and Connectors" at the end of this catalog.

\* Contact JST for details.