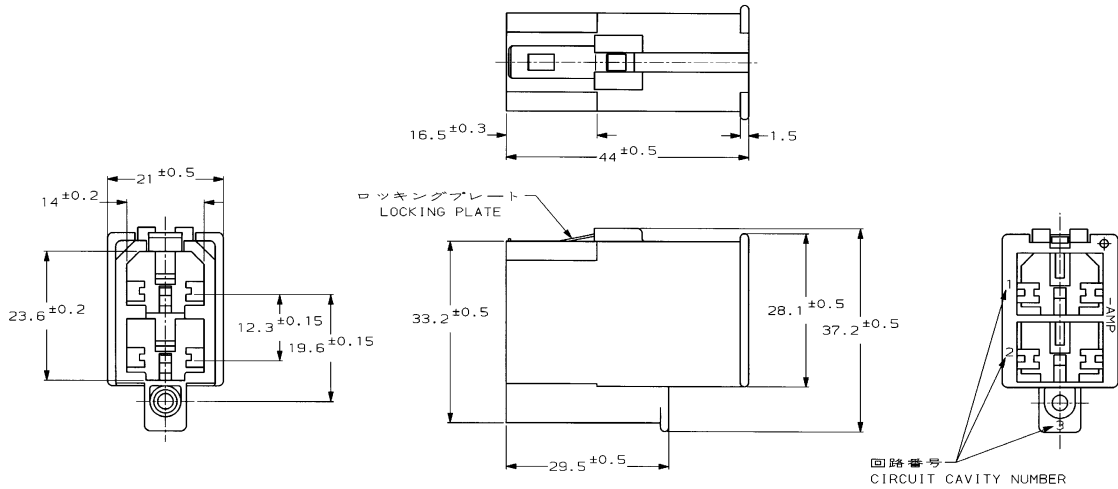


THIS DRAWING IS UNPUBLISHED. RELEASED FOR PUBLICATION .19
 © COPYRIGHT 19 BY AMP INCORPORATED. ALL RIGHTS RESERVED.

REVISIONS						
P	LT#	DESCRIPTION	ECN	DATE	OWN	APPD
D		REDRAWN W/CHANGE	F100-1090-SB	1988-02	秀夫	?
D1		REV PER ECO-10-000030		21JAN10	KK	HMR



- 1 THE MATING CAP HOUSING PART NUMBER; 171447
- 2 APPLIED CONTACT PART NUMBER; 280074, 280075, 350218, 350547
- 3 MATERIAL : HOUSING : 66 NYLON
 LOCKING PLATE : STAINLESS
- △ OBSOLETE PARTS: OBSOLETE CIS STREAMLINING PER D.RENAUD/D.SINISI
- 1 嵌合相手ハウジング型番 : 171447
- 2 適用するタブコンタクト型番 : 280074, 280075
 メイテンロックピン型番 : 350218, 350547
- 3 材料 : ハウジング : 66ナイロン
 ロッキングプレート : ステンレス

BROWN 茶	171449-3
BLACK 黒	171449-2
△ OBSOLETE NATURAL 自然色	171449-1
COLOR 色	PART NUMBER 型番

THIS DRAWING IS UNPUBLISHED. RELEASED FOR PUBLICATION .19 © COPYRIGHT 19 BY AMP INCORPORATED. ALL RIGHTS RESERVED.		FOR: <i>T. Shinohara</i> DATE: 2009-07-16 CHK: <i>H. Saito</i>	
DIMENSIONS: 寸法 	TOLERANCES UNLESS OTHERWISE SPECIFIED 公差 寸法 ±0.2 寸法 ±0.25 寸法 ±0.3 寸法 ±0.3*	PRODUCT SPEC 規格仕様 108-5094	AMP AMP INCORPORATED Kawasaki, Japan
MATERIAL 材質 SEE NOTE	FINISH 仕上 #	NET WT 8.6g	SIZE A2 00779 DRAWING NO 171449 SCALE 2:1 SHEET 1 OF 1 REV D1

AMP 1471-9 REV 10/93
 f1029180

参考図面