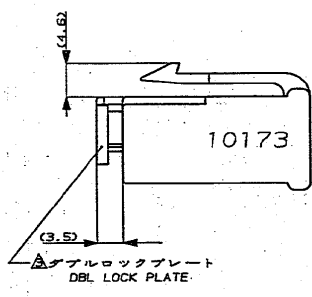
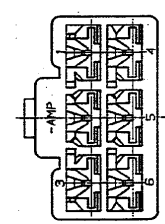
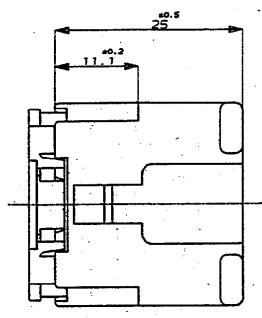
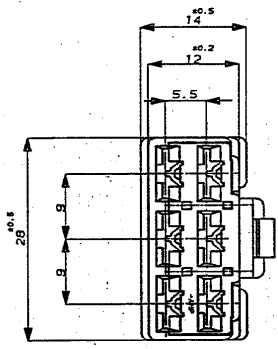


NUMBER C-178022

PRINT DIBT
 <USERS>DEPT5270-E20986-U.250-U.6P-S.PLUG-I.L
 DIMENSIONS IN MM. DO NOT SCALE PRINT



NOTE ;
 1. THE MATING COUNTERPART P/N (178025,171897)
 2. APPLIED CONTACT (170032,170258,170384)
 ▲ DBL LOCK PLATE MATERIAL ; PBT COLOR ; YELLOW
 ▲ OBSOLETE PARTS: OBSOLETE CIS STREAMLINING PER D.RENAUD/D.SINISI

注 :
 1 嵌合する相手ハウジングは 型番 178025,171897
 2 使用端子は 型番 170032,170258,170384
 ▲ダブルロックプレートは黄色のPBT材である

	5-178022-6	淡灰 (LIGHT GRAY)
▲OBSOLETE	178022-8	オレンジ (ORANGE)
	178022-7	黄 (YELLOW)
	178022-6	灰 (GRAY)
	178022-5	青 (BLUE)
▲OBSOLETE	178022-4	緑 (GREEN)
	178022-2	黒 (BLACK)
	178022-1	自然色 (NATURAL)
	番号 (P/N)	色 (COLOR)

Copyright ©1990 AMP Limited. ALL RIGHTS RESERVED.		Copyright ©1990 AMP Limited. ALL RIGHTS RESERVED.		AMP Tokyo, Japan	
TYPE (SERIES OR LINE NAME)	INSULATION DIA.	NAME (NAME) .250 シリーズダブルロック コネクタ 5Pos. PLUG HOUSING (INTER LOCK TYPE)			
TERMINALS	COLOR	GENERAL TOLERANCES: MILL: #0.2, .300, .400, .500, .600, .700, .800, .900, 1.000, 1.200, 1.500, 2.000, 2.500, 3.000, 4.000, 5.000, 6.000, 8.000, 10.000, 12.000, 15.000, 20.000, 25.000, 30.000, 40.000, 50.000, 60.000, 80.000, 100.000, 120.000, 150.000, 200.000, 250.000, 300.000, 400.000, 500.000, 600.000, 800.000, 1000.000			
REVISIONS	DATE	BY	CHK	APP	DATE
Q1 REV PER ECO-10-000030		KK	AEG		
0 作成 RELEASED J-13038	25/11/91	DR	T. Sogawa	CHK	2/12/91
LTR	REVISION RECORDED	DR	CHK	DATE	CHK

(CUSTOMER DRAWING) 参考 図面