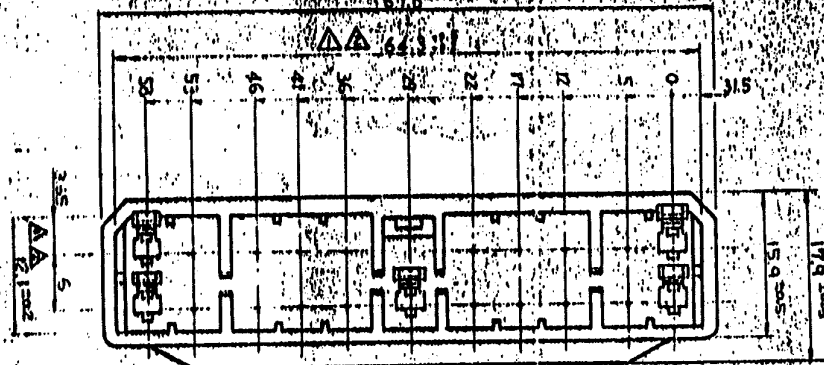
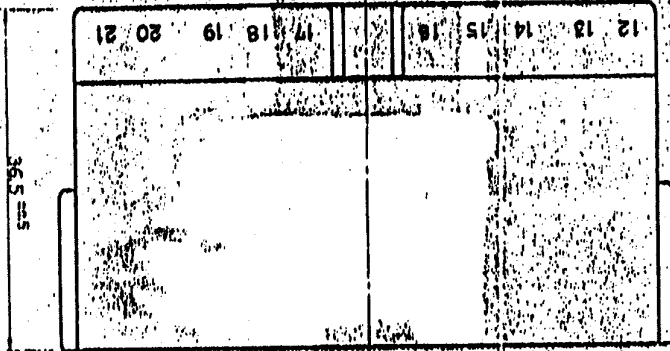
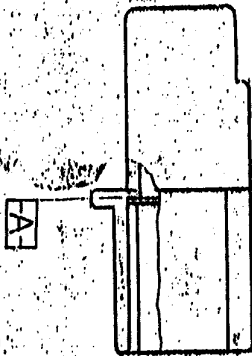


PRINT DIST

ALL DIMENSIONS IN MM DO NOT SCALE PRINT



REV	DATE	DESCRIPTION
0	97-07-16	INITIAL DESIGN
1	97-07-16	REVISION RECORD OR CHANGE

Copyright © 1998 All Rights Reserved		Copyright © 1998 All Rights Reserved	
SAMSUNG ELECTRONICS CO., LTD.		SAMSUNG ELECTRONICS CO., LTD.	
151, Songdo-dong, Yeosu-city, Jeon-sou, Korea		151, Songdo-dong, Yeosu-city, Jeon-sou, Korea	
TEL: +82-54-270-1000		TEL: +82-54-270-1000	
FAX: +82-54-270-1001		FAX: +82-54-270-1001	
E-MAIL: sec@semco.samsung.com		E-MAIL: sec@semco.samsung.com	
WWW: www.semco.samsung.com		WWW: www.semco.samsung.com	
REV. 1.0		REV. 1.0	
DATE: 97-07-16		DATE: 97-07-16	
DRAWN: [Signature]		DRAWN: [Signature]	
CHECKED: [Signature]		CHECKED: [Signature]	
APPROVED: [Signature]		APPROVED: [Signature]	
PART NO. C-172510		PART NO. C-172510	
REV. A		REV. A	

- NOTES
- 1. TO BE MEASURED WITHIN 2mm FROM [A] IN COUPLING WITH THE PUGY HOUSING SAMSES FUNCTION.
 - 2. APPLIED CONTACT P/N: 172777, 172779
 - 3. PRODUCT SPEC No: 108-5766
 - 4. IN COUPLING WITH THE PUGY HOUSING HAVING FORCE 3kgmax WITHOUT THE CONTACT.
 - 5. [A] 2mmの距離で測定
 - 6. [A] の位置を指定の公差を考慮した状態で測定
 - 7. 接触するコンタクト番号: 172777, 172779 他.
 - 8. 製品規格: No. 108-5766
 - 9. 接触力の最大値は 3kg 以内で測定する

品名 (PAI)	品名 (PAI)	品名 (PAI)
FT2510	-1	黒 (Black)
	-2	茶 (Brown)
	-3	赤 (Red)
	-4	青 (Green)
	-5	白 (White)
	-6	黄 (Yellow)