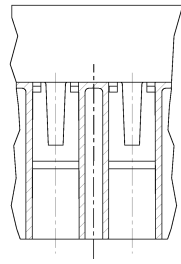
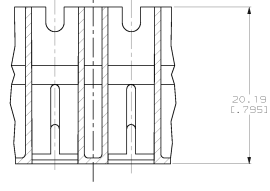
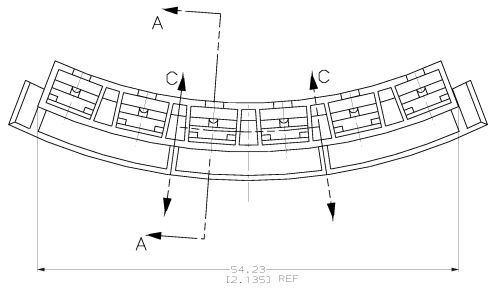


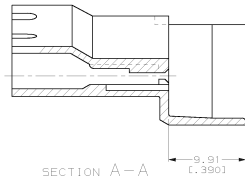
1 USE WITH TERMINAL PART NUMBER: 1217608-1.



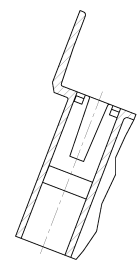
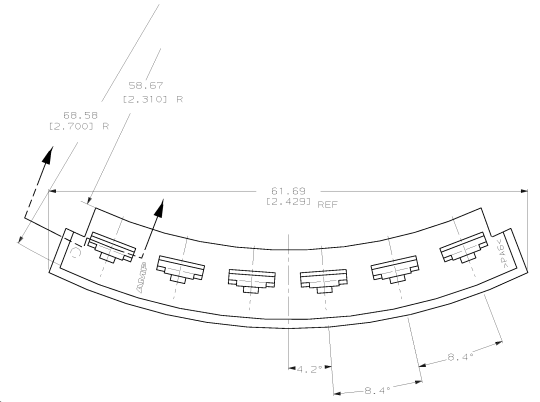
SECTION B-B  
WITH ENTIRE REAR VIEW



SECTION C-C



SECTION A-A



521381-1  
PART NUMBER

THIS DRAWING IS A CONTROLLED DOCUMENT.		BY: MICHAEL S. FETTER	DATE: 11/17/00	AMP Incorporated Harrisburg, PA 17105-3608
DRAWN BY: J. BASOLLE		DATE: 11/17/00	REV: 50	
INTENDED FOR: FASTEN-FASTON PART A: RECEPTACLE	PART B: FASTEN-FASTON PART C: RECEPTACLE	TITLE: HOUSING, RECEPTACLE, FASTEN-FASTON® POSITION, 4.75 (1187) SERIES	THE USE OF THIS DRAWING IS LIMITED TO THE PART AND QUANTITY SPECIFIED IN THE ORDER.	PART NUMBER: 521381-1
MATERIAL: AKULON 4225-115 COLOR: BLACK	FINISH: BLACK	DRAWING NO: 00778	REV: 50	DATE: 11/17/00