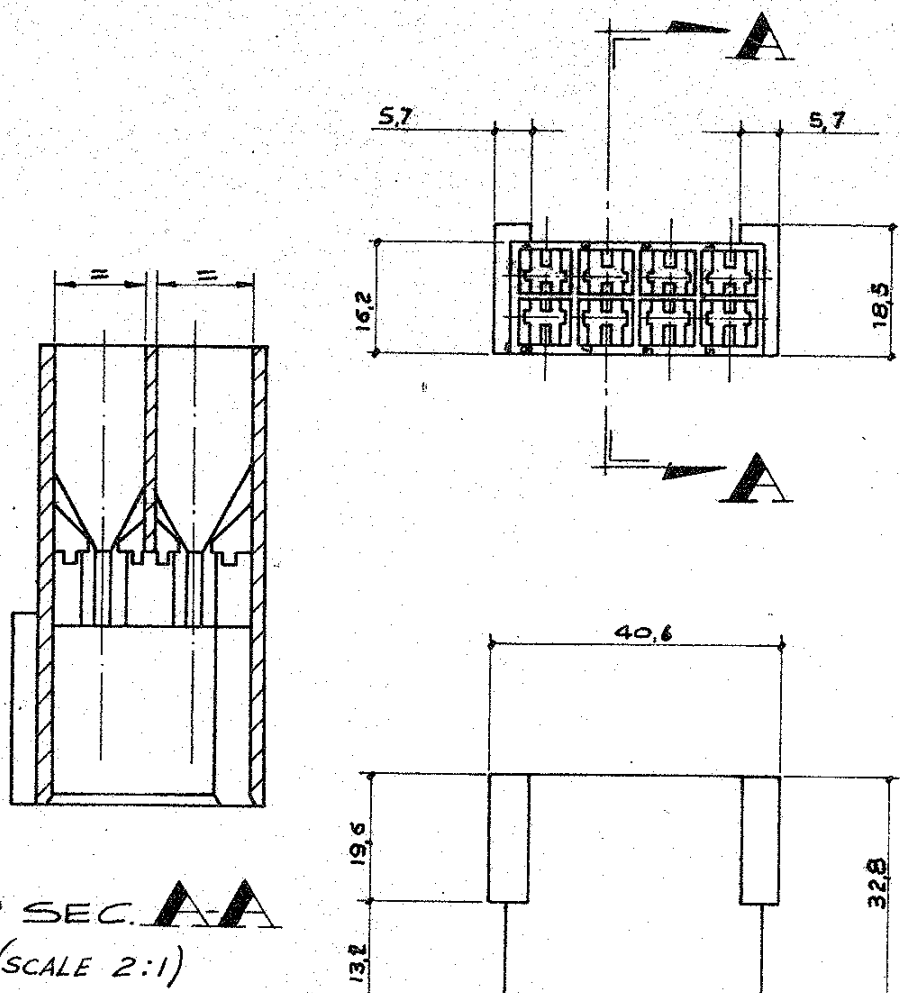


Revised ET00-0319-97 A.F. 05.09/1997

280099



BLACK	Poliamide 6.6	280099-5
BLUE		<del>280099-3</del>
RED		280099-1
CLEAR		280099-0
COLORE		MATERIALS

**OBSOLETE**

DIMENSIONS IN MM DO NOT SCALE PRINT

J	Rivisto	US.		11-11-83
H	ADDED RED - GREEN & BLUE VERSION	RR		8/5/78
G	ADDED BLACK VERSION	RR		12/9/74
F	AGGIUNTO SEZ. A-A	RR		17/4/74
E	REVISIONATO	VP		12-10-73
L	RIVISTO PER ECN I-2855	VP		27-5-73
LTR	REVISION RECORD	DR	CHK	DATE
DR	Tavolo 21-1-72	DE		
CHK	27-2-72	APP		

© 1972 BY AMP INCORPORATED. ALL RIGHTS RESERVED. AMP PRODUCTS COVERED BY PATENTS AND/OR PATENTS PENDING.

**CUSTOMER COPY REFERENCE ONLY**

MATERIAL AND FINISH	
SEE TABLE	
WIRE RANGE	INSULATION
---	---
TOLERANCE EXCEPT AS NOTED	
0.1° 1.0°	

<b>AMP</b>		AMP ITALIA VIA CERVI 15 COLLEGNO (TORINO)	
CLASS	---		
TYPE	---		
LOC	I	NO	A
NO	C-280099		

**6 WAY FAST-IN-ON HOUSING 250 SERIES WITHOUT EARS**