

NUMBER  
**C-180913**

- 180913 CLEAR Polyamide 6.6
- 1 RED \*
  - 3 BLUE \*
  - 5 BLACK \*
  - 7 GRAY \*
  - ORANGE \*

\* NOT YET RELEASED FOR PRODUCTION.

OPTIONAL WAY TO MAKE

DRAFT OPTIONAL

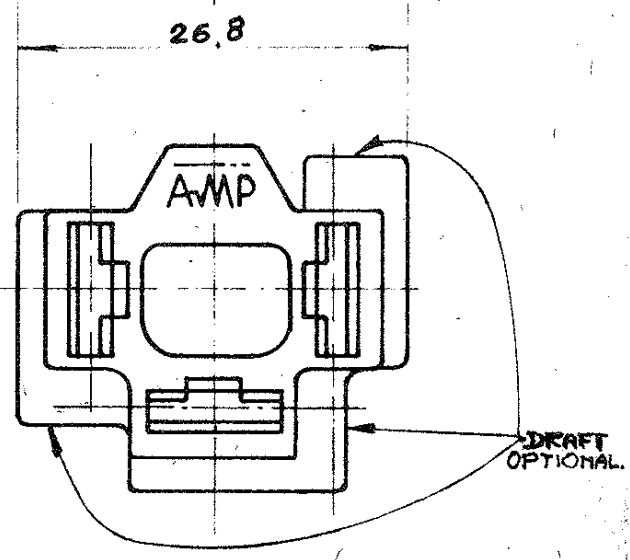
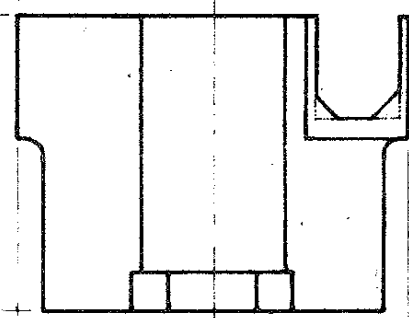
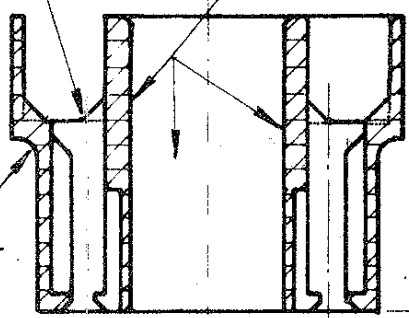
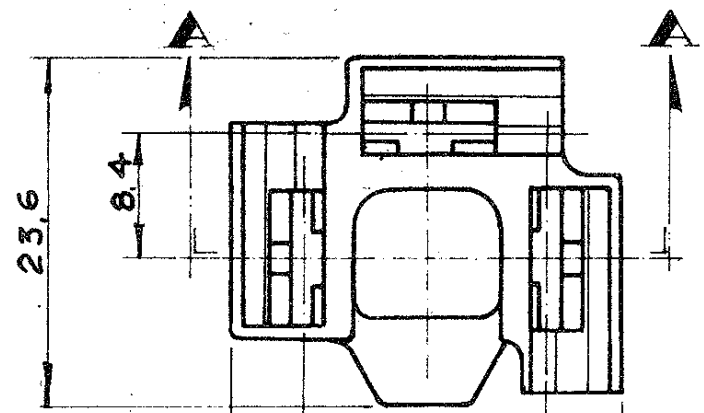
RADII  
OPTIONAL

SEC. **AA**

POLYPROPYLENE	3-180913-0	NOTE 1
A.B.S. BLACK	2-180913-5	NOTE 1
A.B.S. NATURAL	2-180913-0	NOTE 1
RHODIACETA A 2/212 BLACK	1-180913-5	
Polyamide 6.6	180913	
MATERIAL	AMP PART NUMBER	

NOTE

1) NOT PRODUCED BY AMP ITALY



DIMENSIONS IN INCHES. DO NOT SCALE PRINT.

M1	REVISED PER ECO-10-000445	KK	HMR	29 JAN 10
M	Revised	EB.		9-9 83
L	UP-DATED MATERIAL TABLE			29/6/1983
K	UP-DATED COLOR TABLE			MARCH 77
J	ADDED OPTIONAL WAY TO MAKE			APR 75
H	Aggiornato			May 3-78
G	REVISED			NOV. 25-77
F	ADDED NOTES OPTIONAL			NOV. 19-76
E	REVISED & REDRAWN			MAY 28-68
LTR	REVISION RECORD	DR	CHK	DATE
DR	A MEERLINO	12-10	DE	
CHK		62		

© 1962 BY AMP INCORPORATED ALL RIGHTS RESERVED. AMP PRODUCTS COVERED BY PATENTS AND/OR PATENTS PENDING.

**CUSTOMER COPY  
REFERENCE ONLY**

MATERIAL AND FINISH  
**SEE TABLE**

**AMP** AMP - ITALIA  
CORSO PESCHIERA 299/6  
TORINO - ITALIA

WIRE RANGE INSULATION

CLASS **AUTO-MACH.**

TOLERANCE EXCEPT AS NOTED

TYPE **.312" FLAG FASTEN-ON**

SCALE **±0.4 2-1**

LOC **A** NO **C-180913** REV **M1**

NAME **3 WAY FASTEN-ON RECEPTACLE HOUSING**